

KEUCO

KEUCO

EDITION SCOPE

KEUCO GmbH & Co. KG
Postfach 1365
D-58653 Hemer
Telephone +49 2372 904-0
Telefax +49 2372 904-236
info@keuco.de
www.keuco.de

Art.-Nr.: 03507/200401 EDITION SCOPE, englisch (int. + UK), 03/11



Tesseraux + Partner — Anke Salomon und Dominik Tesseraux



MR TESSERAUX, EDITION SCOPE MARKS A MILESTONE – HOWEVER, IS THERE ROOM ON THE MARKET TODAY FOR SUCH A COMPREHENSIVE NEW COLLECTION?

DOMINIK TESSERAUX: There certainly is! Naturally, we don't start a project by asking the question How, rather the question Why. Where has something changed in society? What does that mean for certain products? Only after we have answered these questions are we capable of achieving something that fits in the present, but simultaneously points to the future. EDITION SCOPE is a reaction to the longing for individuality that is becoming increasingly evident in society, and the architectural changes that arise from this.

WHAT IS IT EXACTLY ABOUT EDITION SCOPE THAT POINTS TO THE FUTURE?

ANKE SALOMON: EDITION SCOPE provides a stage for this longing for fulfilment. It doesn't present a design which one is obliged to consume. Rather, in its formal simplicity it offers a kind of plane to project onto, and draws its emotional effect from this. Other forward-looking points are naturally the diverse sizes and variations, and the consistent module concept. Viewed entirely pragmatically, all of this makes EDITION SCOPE a very comfortable way to realize convincing bath-room solutions in an extremely wide range of architectural environments.

IS THERE ANYTHING ABOUT THE SUBJECT OF BATHROOMS IN PARTICULAR WHICH FASCINATES YOU, OR WAS YOUR INTENSIVE WORK WITH THIS ROOM RATHER MORE OF A COINCIDENCE?

ANKE SALOMON: Naturally, we use the bathroom just like any other room. It is an intimate place of relaxation and privacy, and should simultaneously be ergonomic and functional. In that respect the bathroom presents entirely its own challenges, and flexible and aesthetic solutions must be found for these – yes it is certainly all very exciting and it fascinates us.

THIS IS NOT THE FIRST TIME THAT YOU HAVE DONE CREATIVE WORK FOR KEUCO. WHAT DO YOU FIND MOST INTERESTING IN YOUR WORK TOGETHER?

DOMINIK TESSERAUX: In many ways, in the company they think like we do, and that naturally makes it easier to arrive at good results. As I already said: in our view, the question Why is the starting point of every product development, and this question is treated very seriously at KEUCO. For KEUCO, being new is not a goal in itself, rather it is clearly about establishing really relevant product innovations, which have the potential of being successful in the market for a long time. This long term design approach is not to be taken for granted, and that is what we like very much in the KEUCO philosophy.

FURNITURE & WASHBASINS

12—23

FITTINGS

30—45

MIRRORS &

MIRROR CABINETS

52—57

ACCESSORIES

60—69



EXPERIENCE THE LIMITLESSNESS OF TIME AND SPACE.
DISCOVER THE INTERPLAY OF LIGHT AND FORM





Expansive lines give EDITION SCOPE a special magnanimity. The demonstratively slender arrangement of joints and the apparently floating fronts give the furniture a lightness and elegance.



14—15 FURNITURE & WASHBASINS

As large, as small, as flexible and as rich in variety as one could wish for. EDITION SCOPE liberates by its diversity. Its enormous transformability allows the collection to blend harmoniously into a wide range of aesthetic and spatial situations.

16—17 FURNITURE & WASHBASINS

When the front drawer of the vanity unit glides open, its interior light switches on automatically. Tidiness is made possible in particular by the freely positionable storage boxes.



By combining two sizes, a generous work area can be created beside the ceramic washbasin.

18 — 19 FURNITURE & WASHBASINS





20—21 FURNITURE

Formal simplicity outside, intelligent organization inside: side unit with freely positionable storage box in the front drawer.

EDITION SCOPE washbasins are available in the materials VARICOR® and ceramic. VARICOR® consists of natural mineral components. It is robust, hygienic, and has a silky-matt lustre. On the right, in comparison, the glossy ceramic model.

22—23 FURNITURE & WASHBASINS



FURNITURE &
WASHBASINS

12—23

FITTINGS

30—45

MIRRORS &

MIRROR CABINETS

52—57

ACCESSORIES

60—69



AT THE BEGINNING ARE THE WALLS. THESE ESTABLISH THE RHYTHM AND BASIC TONE OF A ROOM.



Lean in shape, and lean in consumption: as all EDITION SCOPE washbasin fittings, the single-lever mixer has a flow rate limiter.

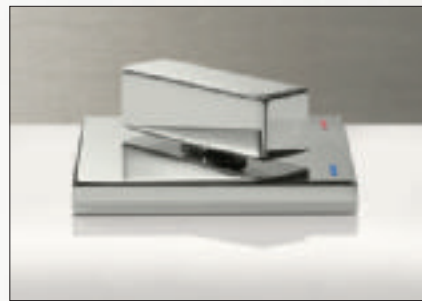
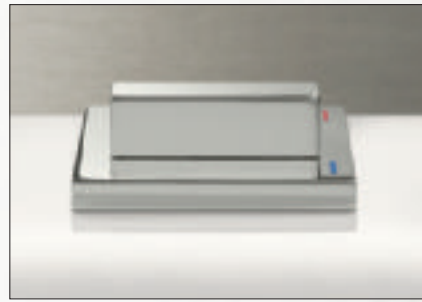
30—31 FITTINGS



32—33 FITTINGS

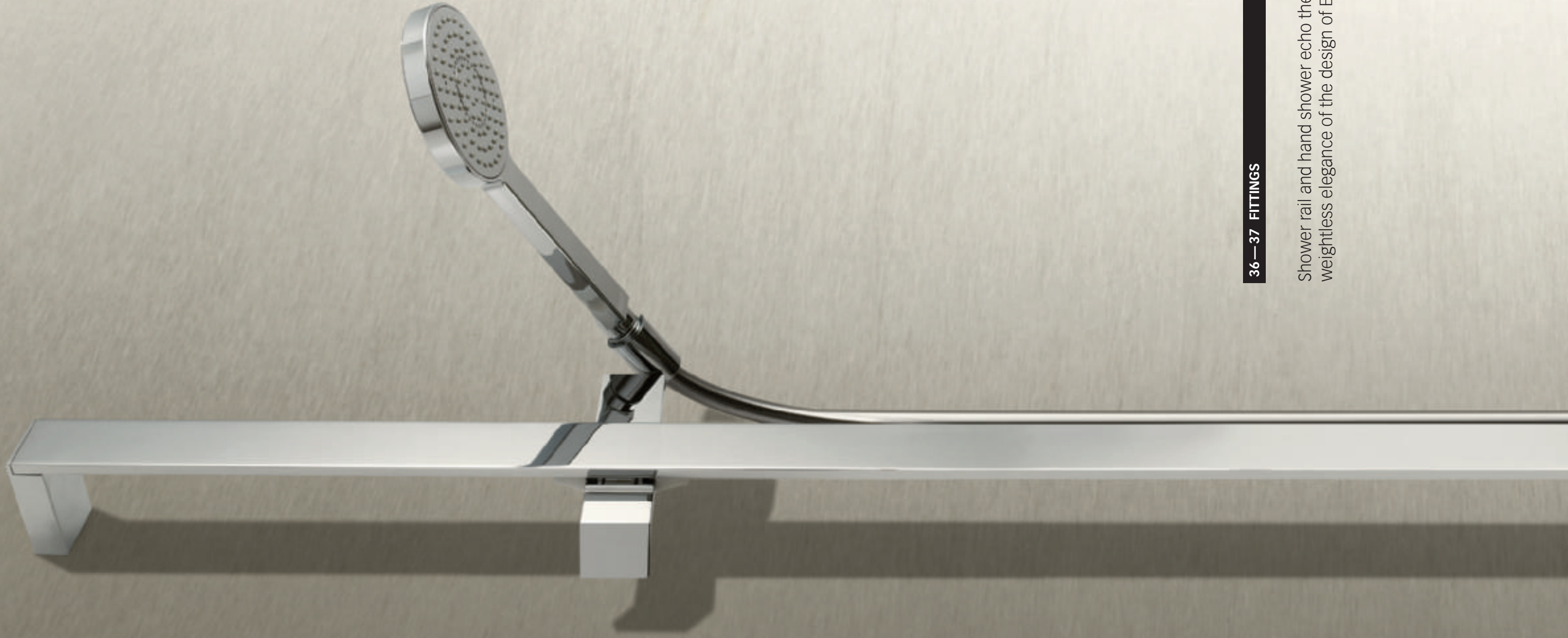
The rich variety of EDITION SCOPE is also evident in the associated assortment of fittings: the single-lever mixer as wall-mounted model. The immaculately crafted chrome surfaces are hand-polished in a complex process.





Three-hole fitting with a difference: temperature regulation on the left, flow rate on the right. After adjusting to the desired temperature, by pulling it up, the regulator can be returned to its initial position so that the temperature setting is retained, without having the regulator set at an angle.





36—37 FITTINGS

Shower rail and hand shower echo the weightless elegance of the design of EDITION SCOPE.



38—39 FITTINGS

Less is more: clear lines and geometric forms characterize the shower thermostats.



40—41 FITTINGS

Ergonomics and concentration on the essentials: by combining wall-outlet and bracket the sleek hand shower is always conveniently close at hand.



42—43 FITTINGS

Four-hole bath tub fitting with hand held rod shower head. The basic square form of EDITION SCOPE is echoed in the discs.



The bath tub mixer shines in immaculate chrome lustre, with flow and temperature regulators situated on the side.

FURNITURE &

WASHBASINS 12—23

FITTINGS 30—45

MIRRORS &

MIRROR CABINETS 52—57

ACCESSORIES 60—69



WATER IS LIFE, CLEANLINESS, AND REGENERATION.
WATER IS A FEELING OF WELLBEING.





52—53 MIRRORS & MIRROR CABINETS

Mirror cabinets redefined: the movable, integrated light modules and side mirrors can be adjusted to a right angle so that the face is optimally illuminated. Even the intensity of light can be perfectly adjusted this way.



Intelligent details that make the morning routine a pleasure: interior sliding mirrors with height-adjustable cosmetic mirror, interior and exterior electric sockets, docking station for iPods and iPhones, integrated loudspeakers – EDITION SCOPE mirror cabinets offer a new standard of comfort.

The utmost in freedom: the sizes of the light mirror range right up to the panorama size of 2800 mm. This allows the creation of very individual washbasin solutions.



FURNITURE &

WASHBASINS 12—23

FITTINGS 30—45

MIRRORS &

MIRROR CABINETS 52—57

ACCESSORIES 60—69



The soap holder has a removable crystal dish.
The handblown glass tumblers in the twin holder
are also made of the same high quality material.

62—63 ACCESSORIES

Simple shapes, thoughtfully conceived: Fixed towel holder and towel ring. The latter has a spacer which ensures that damp towels can dry properly with sufficient ventilation space away from the wall.



The shower basket with rail is easy to clean, and offers generous space for soaps, shampoos, etc.

64—65 ACCESSORIES



66—67 ACCESSORIES

Because of its rounded form on the inner surface, the grab bar, with its concisely crafted edges, has a sensuous feel to it.





Simply beautiful: the toilet paper holder and toilet brush set echo the clear lines of EDITION SCOPE.



51102



51109



51126



51171



51173



51185



51115



51116



51172



51172



51174



51180

51102 Single lever basin mixer
with/without pop-up waste 1 1/4 Inch
1-hole installation
Cartridge mixer with ceramic sealing gaskets
aerator SLIM SSR M 24 x 1
adjustable flow angle +/- 6°
Flow rate limited to 7,6 l/min.

51109 Single lever bidet mixer
with pop-up waste 1 1/4 Inch
1-hole installation
Cartridge mixer with ceramic sealing gaskets,
Globe joint
aerator cache TT M 18,5 x 1
Flow rate limited to 7,6 l/min.

51126 Thermostat battery for shower
exposed fitting
handle with 50% quantity limiter,
safety cutoff at 38 °C,
Wall bracket for shower hose DN 15,
depth gauge 150 +/- 14 mm,
with backflow preventer

51171 Single lever shower mixer
concealed fitting
complete set matches Flexx Boxx EHM DN 20,
consisting of: lever, sleeve, collar
(essential for installation: Flexx Boxx EHM DN 20)

51173 Thermostat battery
concealed fitting
with ceramic shutoff valve,
safety cutoff at 38 °C,
complete set matches Flexx Boxx THM DN 20,
consisting of: lever, sleeve, collar
(essential for installation: Flexx Boxx THM DN 20)

51185 Hand shower sliding rail
consisting of:
Wall rail 1200 mm
Sliding bracket for hand shower
Tile compensation plate (5 mm)
Height adjustment via handle,
tilting angle adjustable

51115 Three hole basin mixer
with/without pop-up waste 1 1/4 Inch
3-hole installation, ceramic valve for temperature
regulation and valve for flow control
aerator SLIM SSR M 24 x 1
adjustable flow angle +/- 6°
Flow rate limited to 7,6 l/min.

51116 Single lever basin mixer
wall-mounted, concealed fitting
Cartridge mixer with ceramic sealing gaskets
aerator SLIM SSR M 24 x 1
Flow rate limited to 7,6 l/Min.
adjustable flow angle +/- 6°
(essential for installation:
Rough part Art.-No. 51116)

51172 Single lever bath tub mixer
concealed fitting
complete set matches Flexx Boxx EHM DN 20,
consisting of: lever, sleeve, adjuster, collar
(essential for installation: Flexx Boxx EHM DN 20)

51172 Single lever bath tub mixer
concealed fitting with safety device,
complete set matches Flexx Boxx EHM DN 20
with safety device,
consisting of: lever, sleeve, adjuster, collar
(essential for installation: Flexx Boxx)

51174 Thermostat battery
concealed fitting
with shut-off valve and diverter,
safety cutoff at 38 °C,
complete set matches Flexx Boxx THM DN 20,
consisting of: lever, sleeve, collar
(essential for installation: Flexx Boxx THM DN 20)

51180 Hand shower
Normal jet
Soft jet
Massage jet



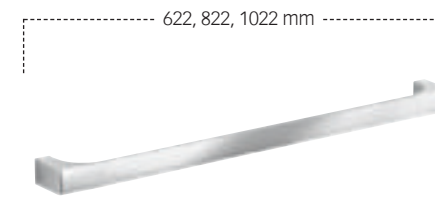
51191



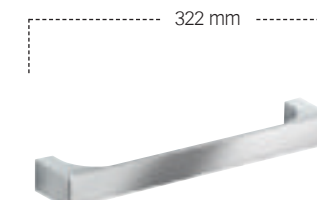
51120



51130



11101



11107



11110



51192



51147



51145



11114



11115



11116

51191 Wall bracket for hand shower
for shower hoses with conical nuts,
reversible for L/H or R/H installation

51120 Single lever bath tub mixer
exposed fitting
shut-off valve and diverter with ceramic sealing
gaskets, mixing valve with ceramic sealing gaskets,
Wall bracket for shower hose DN 15
(Flow rate limited to 12 l/min.),
with backflow preventer, depth gauge
150 +/- 14 mm,
aerator M 28x1, flow rate ca. 23 l/min

51130 4-Hole deck-mounted bath set
4-hole bath filler
ceramic valve for temperature regulation
and valve for flow control, aerator M 28x1,
pull-out pencil hand shower
with backflow preventer
Projection: 180, 220 mm
(suitable fixing block Art. No. 51130
to be ordered separately)

11101 Towel rail
600, 800, 1000 mm

11107 Grab rail
300 mm

11110 Shelf
with crystalline glass shelf
smoked crystal glass
Overall dimensions (w x h x d):
700 x 120 x 8 mm
1050 x 120 x 8 mm
1400 x 120 x 8 mm

51192 Wall bracket for hand shower
with integrated wall-outlet
for shower hoses with conical nuts,
with backflow preventer
suitable for all concealed fittings

51147 Wall bracket for shower hose DN 15
with backflow preventer
suitable for all concealed fittings

51145 Bath spout DN 20
suitable for all concealed fittings
Projection: 146, 196 mm

11114 Towel hook
47 mm

11115 Double towel hook
double, 46 mm

11116 Robe hook
67 mm



11118



11150



11152



11155



11162



11121



11151



11153



11158



11163



11164

11118 Towel holder
fixed
Projection: 450 mm

11150 Tumbler holder
complete with crystal glass or
smoked crystal glass, hand-blown

11152 Lotion dispenser
crystal glass or smoked crystal glass, frosted,
complete with holder and pump
for liquid soap
Capacity: ca. 180 ml
Dosage: ca. 0,5 ml/Hub

11155 Soap holder
with removable crystal soap dish
or smoked crystal dish

11162 Toilet paper holder
open form
for 120 mm wide paper rolls

11164 Toilet brush set
crystal glass or smoked
crystal glass insert, frosted,
brush and spare brush head

11121 Towel ring

11151 Double tumbler holder
with crystal glasses or
smoked crystal glasses, hand-blown

11153 Double holder
consisting of:
1 x Crystal glass or smoked crystal glass
frosted, hand-blown
1 x Lotion dispenser (Crystal glass or
smoked crystal glass, frosted)
complete with pump for liquid soap
Capacity: ca. 180 ml
Dosage: ca. 0,5 ml/Hub

11158 Shower caddy
aluminium silver anodized/chrome-plated

11163 Spare paper holder

Structured lacquer has a slightly textured and fully impervious surface.

Silky matt lacquer has a velvety soft and strong coloured surface.

High-gloss lacquer has a particularly smooth and high-gloss surface.

Genuine wood veneer is a natural product. Natural variations in colour and grain pattern are possible. This makes each piece of furniture unique.

Glass is not subject to any changes caused by light or environment. Manufactured as tempered glass (ESG), it is highly impervious to shock and impact.

BODY AND FRONT MADE OF GENUINE WOOD VENEER



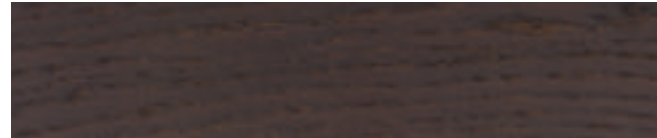
Olive



Light oak

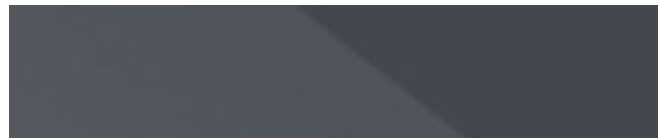


Oak-platin



Oak-tobacco

BODY SILKY MATT LACQUER / FRONT GLASS



Anthracite (RAL 7015)



Truffle



Violet (RAL 4007)



Black

BODY AND FRONT – HIGH-GLOSS LACQUER



White

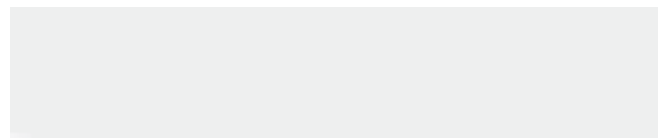
BODY AND FRONT – STRUCTURED LACQUER



Anthracite (RAL 7015)



Truffle



White



31140



31160



31150



31160

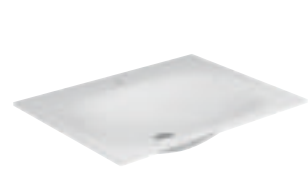
31140 Ceramic washbasin
with CleanPlus surface
Variations:
without tap hole, without overflow drain
suitable for 1-hole fittings or 3-hole fittings
(gauge 200 mm), complete with
CLOU drain and overflow system
Outer measurements (w x h x d):
705 x 17 x 538 mm

31160 Ceramic washbasin
with CleanPlus surface
Variations:
without tap hole, without overflow drain
suitable for 1-hole fittings or 3-hole fittings
(gauge 200 mm), complete with
CLOU drain and overflow system
Outer measurements (w x h x d):
1405 x 17 x 538 mm

31150 Ceramic washbasin
with CleanPlus surface
Variations:
without tap hole, without overflow drain
suitable for 1-hole fittings or 3-hole fittings
(gauge 200 mm), complete with
CLOU drain and overflow system
Outer measurements (w x h x d):
1055 x 17 x 538 mm

31160 Ceramic double washbasin
with CleanPlus surface
Variations:
without tap hole, without overflow drain
suitable for 1-hole fittings or 3-hole fittings
(gauge 200 mm), complete with
CLOU drain and overflow system
Outer measurements (w x h x d):
1405 x 17 x 538 mm

VARICOR® The ideal material for demanding washbasin solutions; a material made of high quality natural minerals and resins. It has a silky matt and warm surface. It is very easy to care for, and satisfies the toughest requirements on durability and hygiene.



31240



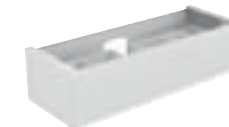
31260



31341



31351



31361



31263



31250



31263



31342



31352



31362



31264

31240 Varicor® washbasin

Variations:
without tap hole, without overflow drain
suitable for 1-hole fittings or 3-hole fittings
(gauge 200 mm), complete with
CLOU drain and overflow system
Outer measurements (w x h x d):
700 x 17 x 535 mm

31260 Varicor® washbasin

Variations:
without tap hole, without overflow drain
suitable for 1-hole fittings or 3-hole fittings
(gauge 200 mm), complete with
CLOU drain and overflow system
Outer measurements (w x h x d):
1400 x 17 x 535 mm

31341 Vanity unit

compatible with ceramic washbasin Article No.
31140 and Varicor® washbasin Article No. 31240,
1 drawer front with push-to-open mechanism
additionally with LED interior lighting,
automatic on-off function
Outer measurements (w x h x d):
700 x 350 x 535 mm

31351 Vanity unit

compatible with ceramic washbasin Article No.
31150 and Varicor® washbasin Article No. 31250,
1 drawer with push-to-open mechanism
Interior fittings:
1 sliding storage box
(190 x 70 x 413 mm)
additionally with LED interior lighting,
automatic on-off function
Outer measurements (w x h x d):
1050 x 350 x 535 mm

31361 Vanity unit

compatible with ceramic washbasin Article No. 31160
and Varicor® washbasin Article No. 31260,
1 drawer with push-to-open mechanism
Interior fittings:
2 sliding storage boxes
(190 x 70 x 413 mm)
additionally with LED interior lighting,
automatic on-off function
Outer measurements (w x h x d):
1400 x 350 x 535 mm

31263 Vanity unit

compatible with Varicor® washbasin
Article No. 31263,
1 drawer with push-to-open mechanism
additionally with LED interior lighting,
automatic on-off function
Outer measurements (w x h x d):
1400 x 350 x 535 mm

31250 Varicor® washbasin

Variations:
without tap hole, without overflow drain
suitable for 1-hole fittings or 3-hole fittings
(gauge 200 mm), complete with
CLOU drain and overflow system
Outer measurements (w x h x d):
1050 x 17 x 535 mm

31263 Varicor® double washbasin

Variations:
without tap hole, without overflow drain
suitable for 1-hole fittings or 3-hole fittings
(gauge 200 mm), complete with
CLOU drain and overflow system
Outer measurements (w x h x d):
1400 x 17 x 535 mm

31342 Vanity unit

compatible with ceramic washbasin Article No.
31140 and Varicor® washbasin Article No. 31240,
2 drawers with push-to-open mechanism
Interior fittings:
1 sliding storage box
(190 x 70 x 413 mm)
additionally with LED interior lighting,
automatic on-off function
Outer measurements (w x h x d):
700 x 700 x 535 mm

31352 Vanity unit

compatible with ceramic washbasin Article No.
31150 and Varicor® washbasin Article No. 31250,
2 drawers with push-to-open mechanism
Interior fittings:
2 sliding storage boxes
(190 x 70 x 413 mm)
additionally with LED interior lighting,
automatic on-off function
Outer measurements (w x h x d):
1050 x 700 x 535 mm

31362 Vanity unit

compatible with ceramic washbasin Article No. 31160
and Varicor® washbasin Article No. 31260,
2 drawers with push-to-open mechanism
Interior fittings:
4 sliding storage boxes
(190 x 70 x 413 mm)
additionally with LED interior lighting,
automatic on-off function
Outer measurements (w x h x d):
1400 x 700 x 535 mm

31264 Vanity unit

compatible with Varicor® washbasin
Article No. 31263,
2 drawers with push-to-open mechanism
2 sliding storage boxes
(190 x 70 x 413 mm)
additionally with LED interior lighting,
automatic on-off function
Outer measurements (w x h x d):
1400 x 700 x 535 mm



31320



31322



31324



31326



31321



31323



31325



31327



31330 / 31331

31320 Side unit
1 drawer with push-to-open mechanism
Outer measurements (w x h x d):
350 x 350 x 535 mm

31322 Side unit
1 drawer with push-to-open mechanism
Interior fittings:
1 sliding storage box
(190 x 70 x 413 mm)
additionally with LED interior lighting,
automatic on-off function
Outer measurements (w x h x d):
700 x 350 x 535 mm

31324 Side unit
1 drawer with push-to-open mechanism
Interior fittings:
1 sliding storage box
(190 x 70 x 413 mm)
additionally with LED interior lighting,
automatic on-off function
Outer measurements (w x h x d):
1050 x 350 x 535 mm

31326 Side unit
1 drawer with push-to-open mechanism
Interior fittings:
2 sliding storage boxes
(190 x 70 x 413 mm)
additionally with LED interior lighting,
automatic on-off function
Outer measurements (w x h x d):
1400 x 350 x 535 mm

31330 Tall unit
1 door with soft-closing
door hinge optional left or right
Interior fittings:
4 glass shelves
Outer measurements (w x h x d):
350 x 1700 x 370 mm

31321 Side unit
2 drawers with push-to-open mechanism
Outer measurements (w x h x d):
350 x 700 x 535 mm

31323 Side unit
2 drawers with push-to-open mechanism
2 sliding storage boxes
(190 x 70 x 413 mm)
additionally with LED interior lighting,
automatic on-off function
Outer measurements (w x h x d):
700 x 700 x 535 mm

31325 Side unit
2 drawers with push-to-open mechanism
2 sliding storage boxes
(190 x 70 x 413 mm)
additionally with LED interior lighting,
automatic on-off function
Outer measurements (w x h x d):
1050 x 700 x 535 mm

31327 Side unit
2 drawers with push-to-open mechanism
4 sliding storage boxes
(190 x 70 x 413 mm)
additionally with LED interior lighting,
automatic on-off function
Outer measurements (w x h x d):
1400 x 700 x 535 mm

31331 Tall unit
1 door with soft-closing
door hinge optional left or right
Interior fittings:
3 glass shelves
1 laundry basket
1 internal drawer
Outer measurements (w x h x d):
350 x 1700 x 370 mm

EDITION SCOPE PLANNING is a comprehensive range of furniture and washbasins which offers a wide variety of Permutations and combinations. The assortment includes ceramic and Varicor® washbasins in various sizes and models, matching vanity units and supplementary furniture. These can be designed as solitary pieces of furniture or combined to create larger units.

FURNITURE VARIATIONS AND POSSIBILITIES

	Vanity unit	Side unit	Modular base cabinet	Tall unit
Solitary units				
Add-on units		 linked to vanity unit linked to side unit		
Base units to create second level			 below vanity unit with ceramic washbasin below sideboard below Varicor® washbasin	

VANITY UNIT WITH CERAMIC WASHBASIN

Ceramic washbasins are available in sizes of 700, 1050 and 1400 mm. Either as single or double washbasin, with or without tap hole.

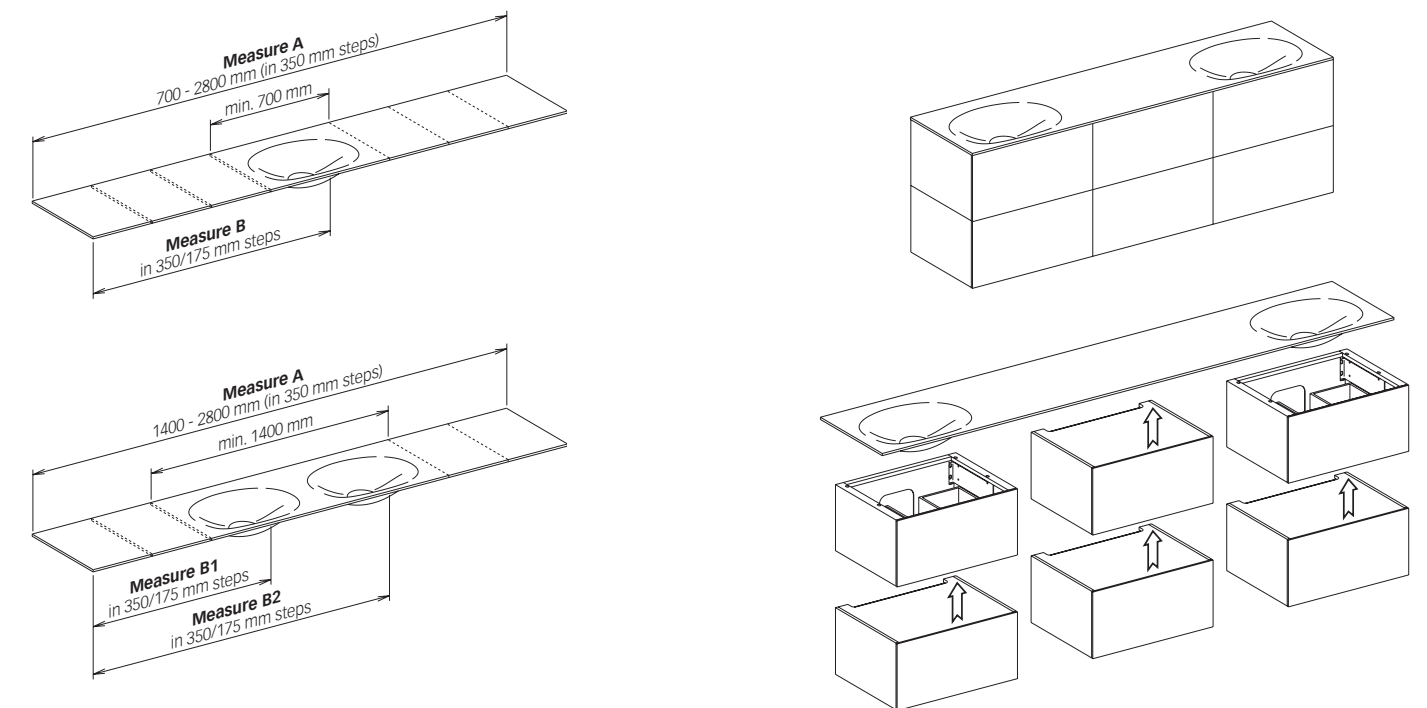
Washbasins	700 mm	1050 mm	1400 mm
Vanity units			
700 mm			
1050 mm			
1400 mm			
1750 mm			
2100 mm			

VANITY UNIT WITH VARICOR® WASHBASIN

Varicor® washbasins are made to measure in widths of 700–2800 mm, and can be combined as single or double washbasin, with or without tap hole, with the furniture variations of vanity unit and modular base cabinet.

	Washbasins 700 – 2800 mm made to measure with variable washbasin bowl				
Vanity units					
700 mm					
1050 mm					
1400 mm					
Base cabinet module					
350 mm					
700 mm					
1050 mm					
1400 mm					

Note: The vanity unit and modular base cabinet can be installed directly beside or under one another. Here, the adjacent furniture is completely and seamlessly covered by the uninterrupted Varicor® washbasin.





31153/31154



31165/31166



31171/31172/31173



31183



31241/31251/31261



31265/31266



31163/31164



31167/31168



31181/31182



31184



31253/31254



31267

31153/31154 Vanity unit

compatible with ceramic washbasin Article No. 31140, optional left (31153) or right (31154)
1 drawer with push-to-open mechanism
Interior fittings:
1 sliding storage box (190 x 70 x 413 mm)
additionally with LED interior lighting, automatic on-off function
Outer measurements (w x h x d):
1050 x 350 x 535 mm

31165/31166 Vanity unit

compatible with ceramic washbasin Article No. 31140, optional left (31165) or right (31166)
1 drawer with push-to-open mechanism
Interior fittings:
2 sliding storage boxes (190 x 70 x 413 mm)
additionally with LED interior lighting, automatic on-off function
Outer measurements (w x h x d):
1400 x 350 x 535 mm

31171/31172/31173 Vanity unit

compatible with ceramic washbasin Article No. 31140, optional left (31171), right (31172) or left and right (31173)
3 drawers with push-to-open mechanism
Interior fittings:
1 sliding storage box (190 x 70 x 413 mm)
additionally with LED interior lighting, automatic on-off function
Outer measurements (w x h x d):
1750 x 350 x 535 mm

31183 Vanity unit

compatible with 2 ceramic washbasins Article No. 31140,
2 drawers with push-to-open mechanism
Interior fittings:
2 sliding storage boxes (190 x 70 x 413 mm)
additionally with LED interior lighting, automatic on-off function
Outer measurements (w x h x d):
2100 x 350 x 535 mm

31241/31251/31261 Vanity unit

compatible with Varicor® washbasin made to measure for central washbasin bowl
1 drawer with push-to-open mechanism
additionally with LED interior lighting, automatic on-off function
Outer measurements (w x h x d):
700 x 350 x 535 mm
1050 x 350 x 535 mm
1400 x 350 x 535 mm

31265/31266 Vanity unit

compatible with Varicor® washbasin made to measure with washbasin bowl, optional left (31265) or right (31266)
1 drawer with push-to-open mechanism
Interior fittings:
2 sliding storage boxes (190 x 70 x 413 mm)
additionally with LED interior lighting, automatic on-off function
Outer measurements (w x h x d):
1400 x 350 x 535 mm

31163/31164 Vanity unit

compatible with ceramic washbasin Article No. 31150, optional left (31163) or right (31164)
1 drawer with push-to-open mechanism
Interior fittings:
2 sliding storage boxes (190 x 70 x 413 mm)
additionally with LED interior lighting, automatic on-off function
Outer measurements (w x h x d):
1400 x 350 x 535 mm

31167/31168 Vanity unit

compatible with ceramic washbasin Article No. 31140, optional left (31167) or right (31168)
2 drawers with push-to-open mechanism
Interior fittings:
1 sliding storage box (190 x 70 x 413 mm)
additionally with LED interior lighting, automatic on-off function
Outer measurements (w x h x d):
1400 x 350 x 535 mm

31181/31182 Vanity unit

compatible with ceramic washbasin Article No. 31150, optional left (31181), right (31182)
2 drawers with push-to-open mechanism
Interior fittings:
2 sliding storage boxes (190 x 70 x 413 mm)
additionally with LED interior lighting, automatic on-off function
Outer measurements (w x h x d):
2100 x 350 x 535 mm

31184 Vanity unit

compatible with 2 ceramic washbasins Article No. 31140,
3 drawers with push-to-open mechanism
Interior fittings:
1 sliding storage box (190 x 70 x 413 mm)
additionally with LED interior lighting, automatic on-off function
Outer measurements (w x h x d):
2100 x 350 x 535 mm

31253/31254 Vanity unit

compatible with Varicor® washbasin made to measure, washbasin bowl optional left (31253) or right (31254)
1 drawer with push-to-open mechanism
Interior fittings:
1 sliding storage box (190 x 70 x 413 mm)
additionally with LED interior lighting, automatic on-off function
Outer measurements (w x h x d):
1050 x 350 x 535 mm

31267 Vanity unit

compatible with Varicor® washbasin made to measure with double washbasin bowl,
1 drawer with push-to-open mechanism
additionally with LED interior lighting, automatic on-off function
Outer measurements (w x h x d):
1400 x 350 x 535 mm



31310



31312



31311



31313



21101/21102/21103



11196



11195

31310 Base cabinet module

1 drawer with push-to-open mechanism
Outer measurements (w x h x d):
350 x 350 x 535 mm

31312 Base cabinet module

1 drawer with push-to-open mechanism
Interior fittings:
1 sliding storage box
(190 x 70 x 413 mm)
additionally with LED interior lighting,
automatic on-off function
Outer measurements (w x h x d):
1050 x 350 x 535 mm

31311 Base cabinet module

1 drawer with push-to-open mechanism
Interior fittings:
1 sliding storage box
(190 x 70 x 413 mm)
additionally with LED interior lighting,
automatic on-off function
Outer measurements (w x h x d):
700 x 350 x 535 mm

31313 Base cabinet module

1 drawer with push-to-open mechanism
Interior fittings:
2 sliding storage boxes
(190 x 70 x 413 mm)
additionally with LED interior lighting,
automatic on-off function
Outer measurements (w x h x d):
1400 x 350 x 535 mm

21101/21102/21103 Mirror cabinet

1 lift up door made from double-sided crystal
mirror, rear wall mirrored, 2 laterally illuminated
side wings, each pivoting up to 90 degrees
with tilting mirror
Fluorescent tube (4 x 14 Watt T5)
Interior fittings:
1 light switch (external)
2 interior power outlets
1 external power outlet
1 sliding interior mirror (180 x 550 mm) with height-
adjustable cosmetic mirror
3 height adjustable glass shelves with brackets
or
2 x 3 height adjustable glass shelves with brackets
Additionally with integrated
MP3/Apple music station
Outer measurements (w x h x d):
1050 x 610 x 155 mm
1400 x 610 x 155 mm
1750 x 610 x 155 mm

11196 Light mirror

2 laterally illuminated side wings, each pivoting up
to 90 degrees with tilting mirror
Fluorescent tube (4 x 14 Watt T5)
Interior fittings:
1 concealed light switch
Outer measurements (w x h x d):
1050 x 610 x 68 mm
1400 x 610 x 68 mm
1750 x 610 x 68 mm
2100 x 610 x 68 mm
2450 x 610 x 68 mm
2800 x 610 x 68 mm
3150 x 610 x 68 mm

11195 Crystal mirror

Outer measurements (w x h x d):
700 x 610 x 26 mm
1050 x 610 x 26 mm
1400 x 610 x 26 mm
1750 x 610 x 26 mm
2100 x 610 x 26 mm
2450 x 610 x 26 mm
2800 x 610 x 26 mm

Please note: Because of electrical compliance rules in different countries the specification may vary!



88 — 89 KEUCO – FASCINATION FOR THE BATHROOM

Sense and sensibility – KEUCO has long been passionate about the bathroom space, and this is evident in our products. A KEUCO bathroom arouses emotions. It is an intimate place of well-being. It conveys elegance and luxury. It combines aesthetical values, ergonomics and functionality.

In no other area of interior living, this challenge is as exciting and as challenging as the bathroom. That is why this fascination still has not lost any of its charm. Since it was founded in 1953, our company, which to this day remains family owned, has undergone a rapid and sustainable development. From the market leader for high quality bathroom accessories KEUCO changed primarily through integration of strategic acquisitions into the brand for the bathroom with a comprehensive, full range of furniture, fittings, accessories and mirror cabinets. Very early on, the focus was on the notion to create complete interior design concepts – a new bathroom architecture.

Key to our success are contemporary, technologically innovative products, the highest standard of quality, a strong design orientation and state-of-the-art manufacturing facilities. KEUCO products are sold worldwide and are market leaders in many areas. They are the result of intensive development work, using only the best materials and most careful workmanship. For best results, we rely on a mix of high-tech manufacturing and genuine craftsmanship. KEUCO quality sets the standard: our products convince through excellent surfaces, maximum longevity and perfect functionality. Each article is examined individually before being sent out.

At KEUCO, design has played a pivotal role long before it became an ubiquitous topic. Our concept is to pursue a classic modern aesthetic that still shows a contemporary edge even after many years. Whether designed in-house or in collaboration with internationally renowned designers – KEUCO products regularly receive prestigious awards.

Timeless design and durable product quality are just some aspects of our sustainability philosophy. This also includes a responsible corporate management, resource-saving production – for example with the help of our own water treatment plant – or our membership of the association “Blue Responsibility” for sustainable water technology. The label “Made in Germany” we consider as a commitment to corporate governance, with the aim of long term job security at its core.

KEUCO products are made in our own production plants in Hemer, Gütersloh and Bünde. Consequent domestic production gives us the ability to nurture and use the know-how of our employees and it allows us a complete quality management throughout the production cycle thus making “Made in Germany” a promise of quality.

We assume a guarantee – according to our manufacturer guarantee statement – of 5 years for our products, provided that it can be demonstrated that the product was purchased and installed by a recognized KEUCO reseller and/or domestic installer.

The guarantee period begins on the date of delivery from our plant. The statutory warranty period is contained in the guarantee period. Electronic and lighting components are omitted from this guarantee statement.

Even the most advanced printing technologies cannot fully reproduce the exceptional finish and subtle colour schemes of our products. Only original KEUCO products can provide you with an optimum impression. These are on display in specialist retail showrooms of the interior and/or sanitary trade.

No part of this brochure may be reprinted or duplicated, even in part, without our explicit consent and without specification of the source manufacturer.

We accept no liability for changes resulting from technical advances and necessary modifications of design and colour, nor from print errors.

Our products are exclusively available through appointed Keuco retailers

Concept, text, design, and lithography: Kontrast Communication Services GmbH, Düsseldorf
Setting photography: Christian Stoll, Düsseldorf
CG Locations: Tino Schaedler, Los Angeles
CG Shooting: The Scope, Digital Studio, Hamburg

Product photography: provideo & fototeam, Menden

Printing: Meinders & Elstermann GmbH & Co. KG, Belm, Osnabrück
Printed on GALAXI Keramik (FSC®). Supplied by the Papier Union.



Looking after the environment – FSC®-certified print.

You can also visit us online at www.keuco.de