

2011>2014 COLLECTION



An extensive selection of available products, colours and finishes is to update and expand the ABET LAMINATI catalogue.

The Collection will be in production for the next four years and the range of solutions on offer is the result of an ongoing commitment to research and total focus on contemporary design. These ranges have really been conceived to satisfy the most diverse tastes, demands and requirements while maintaining the quality that has always been the hallmark of ABET laminates.

There are nine new Collections. Attentive texture and colour research has created specific personality traits, ranging through cool, matt greys, warm browns, glossy whites and plush greens. Vibrant "metallic" tones cast their spell in contrast with delicate beiges, and the magic continues with seductive deep blacks, bright and gleaming silvers and golds whose colours ring with stories of journeys and adventure, or natural rugged rust as far from the sophistication of crystal as can be

imagined. The broad-spectrum study concludes by delineating alternative finishes that enhance the colourways and imbue the laminates with exceptional visual and touchable appeal. The name chosen for each collection is the key to its traits and individuality.

Among the classics, several new wood finishes include some transversals, confirming that the countless decorative options can also be applied to unexpected contexts.

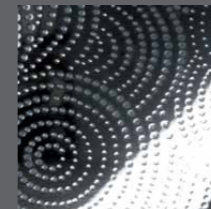
Lastly, new colours are added to enrich the range of many collections already in the catalogue, expanding the extensive and constantly evolving choice with extra nuances.

Creative silk-screened designs, the appeal of digital language, 3D effects, techno decorations and deep surfaces add the finishing touches to a catalogue that always aims to provide designers with superlative options and sources of inspiration for developing each space, idea or project.



DROPS

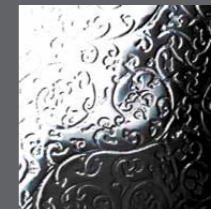
The elegant visual impact of mirror-finish laminates is offered in three vibrant colour decors: silver, gold and steel. The “hammered” effect conjures up the exquisite warm feel of the Mediterranean Africa.



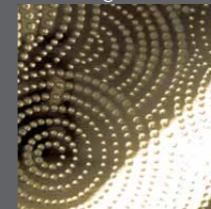
2702 Agadir Silver



2704 Casablanca Silver



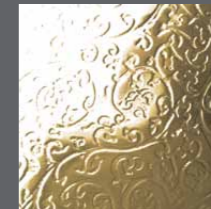
2705 Marrakech Silver



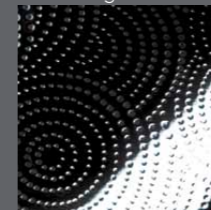
2706 Agadir Gold



2707 Casablanca Gold



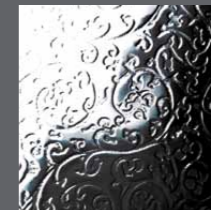
2708 Marrakech Gold



2709 Agadir Steel



2710 Casablanca Steel



2711 Marrakech Steel



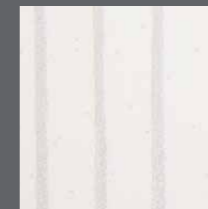
CRYSTALINE



Konstantin Grčić has designed three luxurious decors lit by refined Swarovski crystals. Black and white enhance the simple splendour of Ray and its elegant pinstripe; Bling features a firmament of lights; recurrent geometries bring chic to Peak.



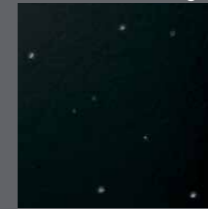
5901 White Bling



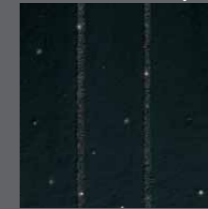
5902 White Ray



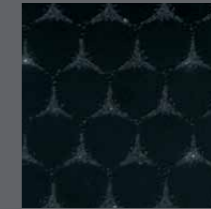
5903 White Peak



5904 Black Bling



5905 Black Ray

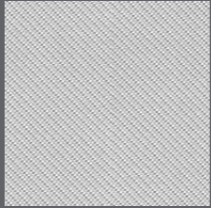


5906 Black Peak

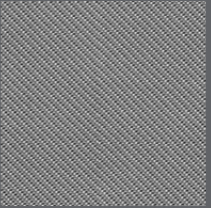


CARBON

Three nuances range from grey through black against a deeply textured techno surface. A decorative finish inspired by carbon fibre makes for a perfect fusion of pattern and appeal.



572 Light Carbon



579 Grey Carbon



571 Black Carbon



PATAGONIA

Five soft, warm shades in this Collection expressed in a classic colour palette ranging from light grey to darker hues, delicate honey and hazelnut to a stronger coffee nuance.



1901 Cerro Sal



1902 Cerro Pimienta



1903 Cerro Miel



1904 Cerro Nuez



1905 Cerro Café



1906 Pike Sal



1907 Pike Pimienta



1908 Pike Miel



1909 Pike Nuez



1910 Pike Café

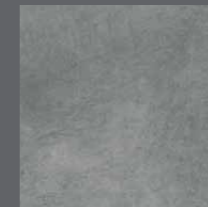


TAIGA

Four block colours with strong, captivating overtones for a textured look inspired by the "earth element".



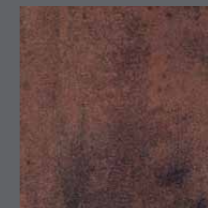
2812 Siberia



2810 Cemento



545 Vulcano



2811 Mongolia



TITANIUM

Two very refined, edgy, matt colours: an original burnished gold and a deep stone grey. The powdery effect is both minimal and sumptuous.



1920 Saturno



1921 Venere



ABET WOOD

Natural veneer

New special veneers, the expressiveness of real wood and the advantages of industrial production. A visual wealth and a tactile appeal amplified by the many differences of grain and colour.



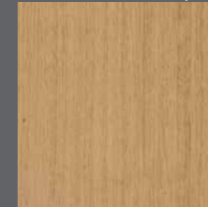
1726 Natural Maple



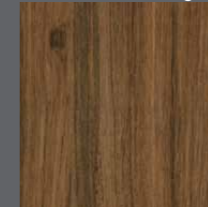
1727 Natural Mahogany



1725 Natural Ash



1722 Natural Oak



1724 Natural Teak



1723 Natural Walnut

ABET WOOD

Reconstituted veneer



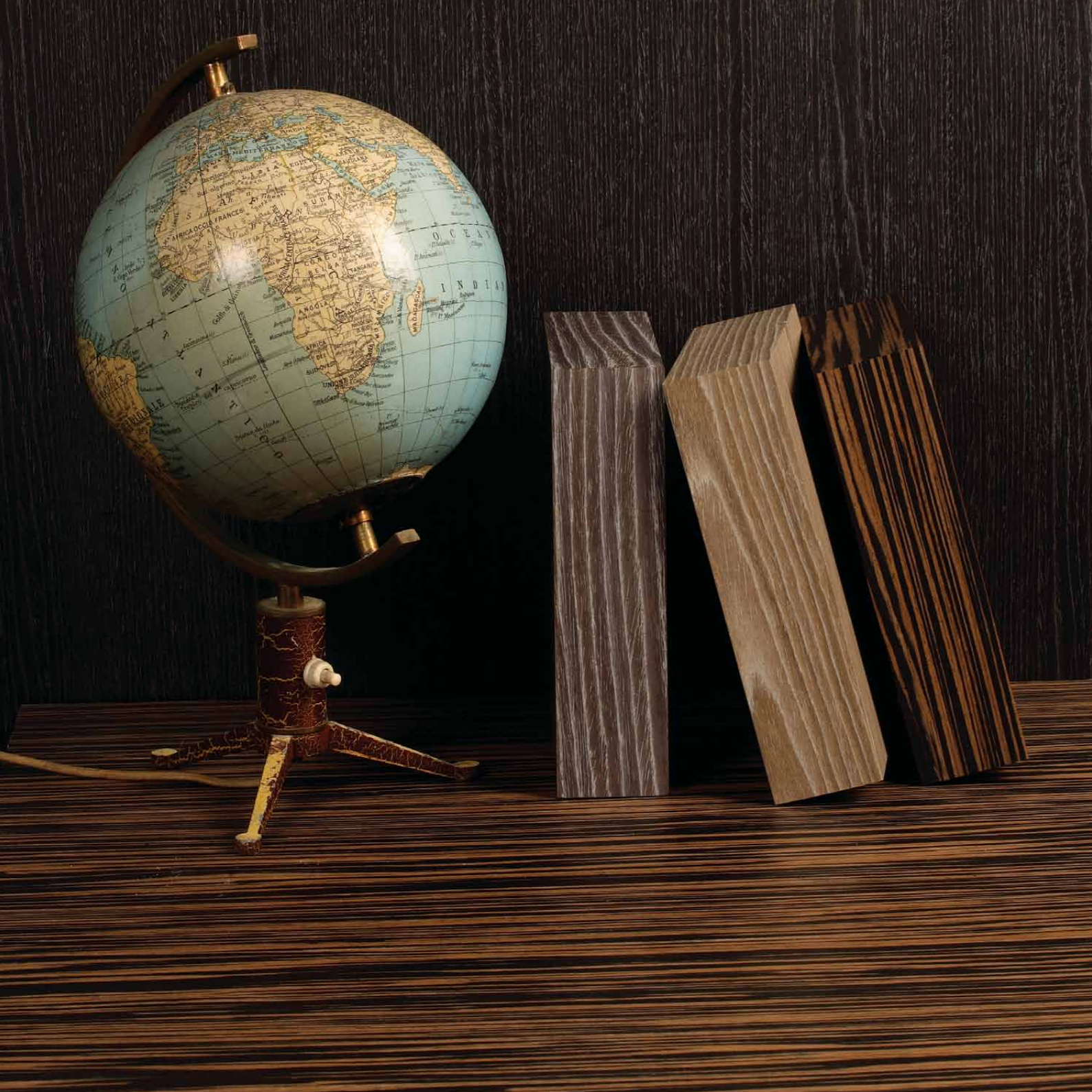
1700 Rovere Chiaro



1713 Rovere River



1716 Noce Grigio



ABET WOOD

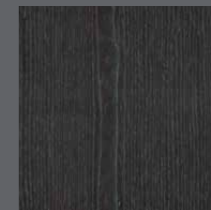
Reconstituted veneer



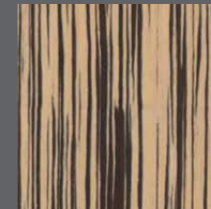
1720 Flamed Oak



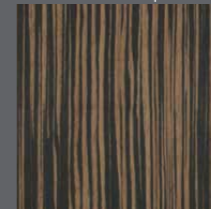
1721 Silver Apricot



1711 Rovere Nigrum



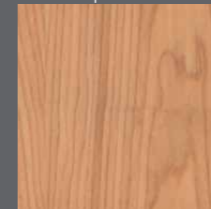
1702 Zapatero Chiaro



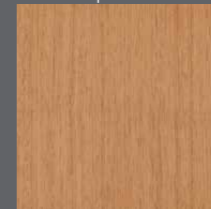
1703 Zapatero Scuro



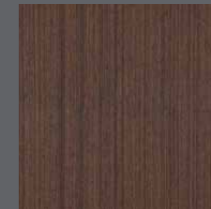
1717 Red Rosewood



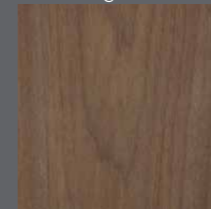
1708 Ciliegio Fiammato



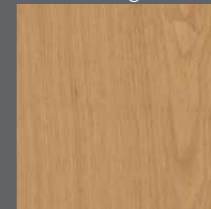
1707 Ciliegio Fine



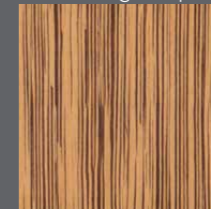
1714 Wengè Tropico



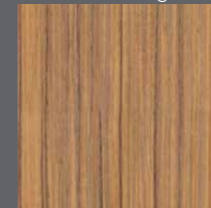
1715 Noce Juglans



1712 Rovere Cerqua



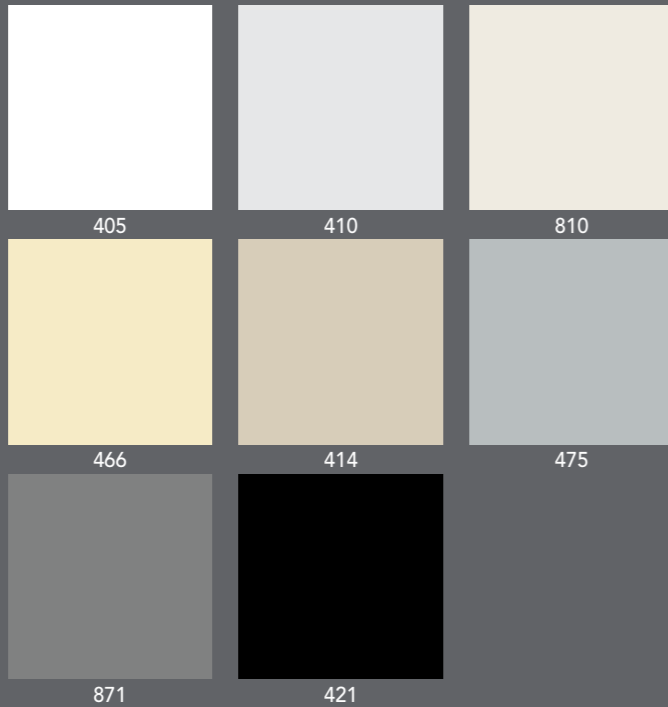
1710 Zebra Brown



1709 Teak Birmano

FULL-COLOUR

A full-colour Collection has been developed to include eight shades available in the classic Sei finish, as well the new Bianco Porcellana, a white also presented in Lucida finish.



OPACHE

The 2010 newcomer, conceived in muted, elegant nuances of white and black with eye-catching textured surfaces that make up an independent collection.



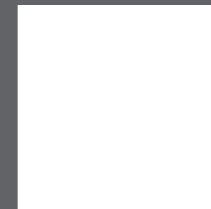
NEW FINISHES

ABET LAMINATI has developed three new Finishes for a complete range of 24 options.

Zodia 3, introduced in 2010, is a revamped, enhanced matt version of the original Zodia. The latest additions are Groove, with its feisty feel and uneven vertical line, and sharp, rugged Rust, alternating gloss and matt.

COLOURS

Nine new shades in the classic Colours Collection: Bianco Porcellana, Viola Sacro, Rosso Cavallino, Verde Maquis, Blu Amorgos, Rosa Patrimonio, Fondente, Cappuccino, Viola Campanula.



405 Bianco Porcellana



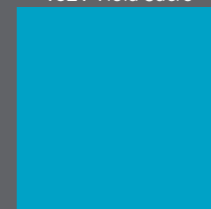
1821 Viola Sacro



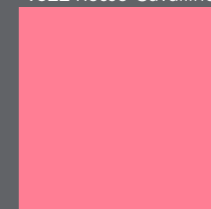
1822 Rosso Cavallino



1823 Verde Maquis



1824 Blu Amorgos



1825 Rosa Patrimonio



1827 Viola Campanula



1826 Cappuccino



1828 Fondente

NEW ARRIVALS

Catalogue collections are also evolving and many solutions complement and enhance the existing ranges, to embrace upcoming trends and meet market demands, offering unusual alternatives.

Nine new options have been added to the Colours Collection in this perspective, including whitest Bianco Porcellana; Viola Sacro, an enigmatic, magical purple; Rosso Cavallino, conjuring up racetrack reds. Verde Maquis, heady island greenery; cool, soaring Blu Amorgos; Rosa Patrimonio, a rich, warm pink; Fondente, a dark, deep chocolate; Cappuccino, a warm beige; Viola Campanula, a fresh violet.

The Colours and Textures Collection, on the other hand, comprises bright and neutral new shades, intensifying the creative potential of seven different finishes, two presented for the first time: Longline and Climb.

Colour also plays a key role in the New York Collection, whose palette has been extended to include ten pastel shades.

There has also been a significant revitalization of several Collections. Beside the classic Legni Collection, with two new proposals and some essences from Legni Speciali Collection, the new

Legni News Collection with a substantial choice of wood finishes that comprises New Wood, 2010 newcomers and new transversal proposals.

I Finti Collection and I Finti NEW Collection laminates have also been given a facelift as part of the new Rocks Collection and supplemented with three 2010 newcomers and six new decors: a dark green, two ivories and three browns.

Finally, the Decori Minimi Collection absorbs the Minimi Due Collection and the I Finti Collection "telatino" 271.

A number of other changes have been incorporated with existing catalogue solutions. From 2011, the Metalli Collection will include a copper nuance for the Morbida finish, while the Satin finish completes the Vertical Line Collection's silver 265 options.

There are four new shades in the Walkprint Collection. Two are the white tones which enrich the HR-LAQ Collection.

To close, the exterior laminates Collection will also be available in Standard black and with four new Wood options. New for 2011, MEG Basic, a laminate with a special Base finish.

THE STORY

ABET LAMINATI was established in Bra, Italy, in the late 1950s and is now a leading decorative plastic laminates manufacturer.

From the beginning, ABET LAMINATI appreciated the importance of a successful rapport with contemporary culture and evolved an eclectic scenario encompassing a wide selection of products to offer a variety of technical features and both visual and practical qualities.

Over the years ABET LAMINATI has fostered close ties with respected designers whose cooperation has enabled the company to play its part in growing the "Made in Italy" image worldwide.

With over 50 years of experience under its belt, this Piedmontese company has continued to invest resources in technology and creativity, working on

product image by seeking out decors and textures capable of arousing curiosity, awakening emotions, bringing inspiration.

A philosophy that has created distinctive, versatile laminates with their own specific identity.

The ABET LAMINATI sales network covers both Italian and foreign markets, and over the years the company's outstanding work has brought prestigious awards. In 1987, there was the Compasso d'Oro award for Diafos, the first transparent laminate with 3D decoration; in 1990 came the European Design Award and in 2001 the Compasso d'Oro Career Award.

Just a few of a collection of accolades testifying to a corporate mission that always targets the best possible results in terms of quality standards and inimitable design.