





### parade collection

Disegnare superfici decorate: un'azione in cui mi sono calato cercando innanzi tutto le sorgenti da cui attingere ispirazione, sorgenti rintracciate nel recupero del disegno a mano libera e nello studio del modulo.

Per mesi il mio studio si è trasformato in un atelier pittorico dove si sperimentava l'effetto dei colori stesi a pennello, delle gocce di colore a caduta libera sul cartoncino, dei tratti di matite colorate che si incrociavano e sovrapponevano in modo caotico e imprevedibile. In questo libero fluire di idee che andavano dalla mente alla mano, scandagliando tecniche coloristiche diverse, supporti più o meno ruvidi, inedite sovrapposizioni di colori e interpellando diverse tecniche grafiche, accostamenti più o meno giudiziosi di segni e strumenti o diverse dimensioni del tratto, ho trovato risorse per dare vita ai decori raccolti nella famiglia di laminati *Fatto a mano*.

Il mondo di Escher e la sua ricerca grafica del modulo perfetto, è stato invece motivo di approfondimento di un'altra inclinazione progettuale che ha dato origine alla famiglia di laminati *Moduli*. Da molto tempo infatti mi occupo della modularità pensata nello spazio, ma questo lavoro, essenzialmente grafico, l'ha trasferita nella bidimensionalità in maniera dirompente e pervasiva. Il progetto del modulo che si ripete senza soluzione di continuità, espandendosi nelle quattro direzioni, evoca una dimensione infinita. È l'anelito che diventa ossessione personale e che invade ogni scampolo di superficie libera, sfiorando così la dimensione ideale in cui lo spazio si sostituisce al tempo, e l'eterna nostalgia dell'infinito, combinata con l'horror vacui, trova in questi progetti di decori, ciò che considero un punto d'arrivo del mio lavoro.

Giulio Iacchetti

designer

# Giulio Iacchetti

## parade collection

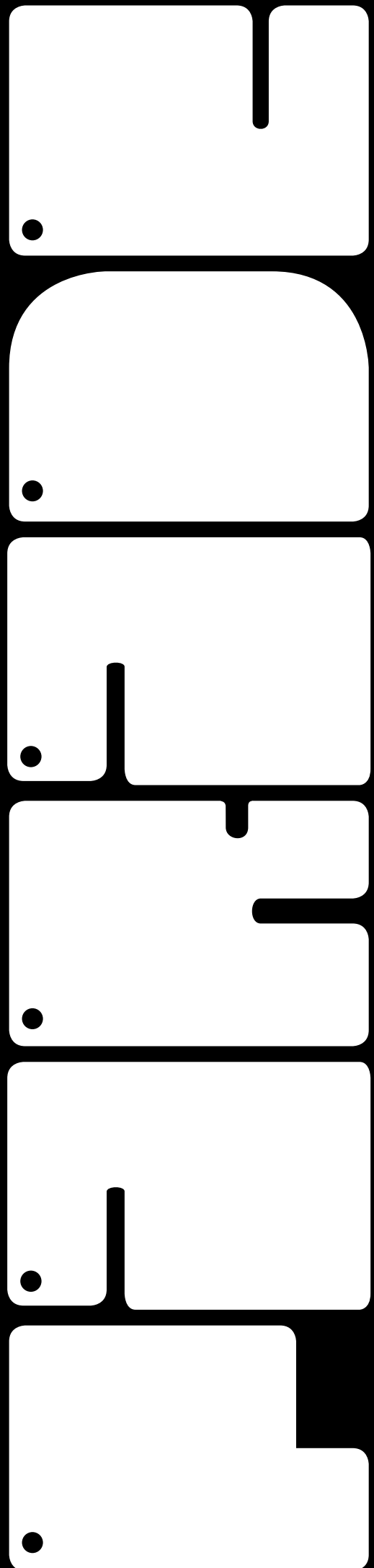
Drawing decorated surfaces: this was the action I undertook trying to find, first of all, the sources to draw inspiration from, which were recovered in freehand drawing and in the study of the unit.

For several months my office has been transformed in a painting atelier where I experienced the effect of colours spread with brushes, of drip free painting onto the cardboard, of coloured pencils strokes crossing and superimposing in a chaotic and unexpected way. In this free flow of ideas moving from mind to hand, deeply exploring different colouristic techniques, more or less rough surfaces, unusual colour superimpositions and employing different graphic techniques, more or less sensible combinations of signs and tools or different stroke sizes, I finally found the resources to give life to the decors collected in the laminates family called *Fatto a mano*.

The world of Escher and his graphic research of the perfect unit, has been instead the reason to further analyse another one of my design inclinations which, in the end, gave life to the laminates family called *Moduli*. As a matter of fact, I have been dealing with modularity in space for a long time, but this work, which is essentially graphic, has transformed it in bidimensionality in a disruptive and pervasive way.

The design of the unit that repeats seamlessly, expanding in the four directions, evokes an infinite dimension. The yearning becomes personal obsession and sprawls on every scrap of free surface, kissing the ideal dimension where space replaces time and the eternal nostalgia for the infinite, combined with the horror vacui, finds in these decor designs, what I consider a point of arrival in my work.

Giulio Iacchetti

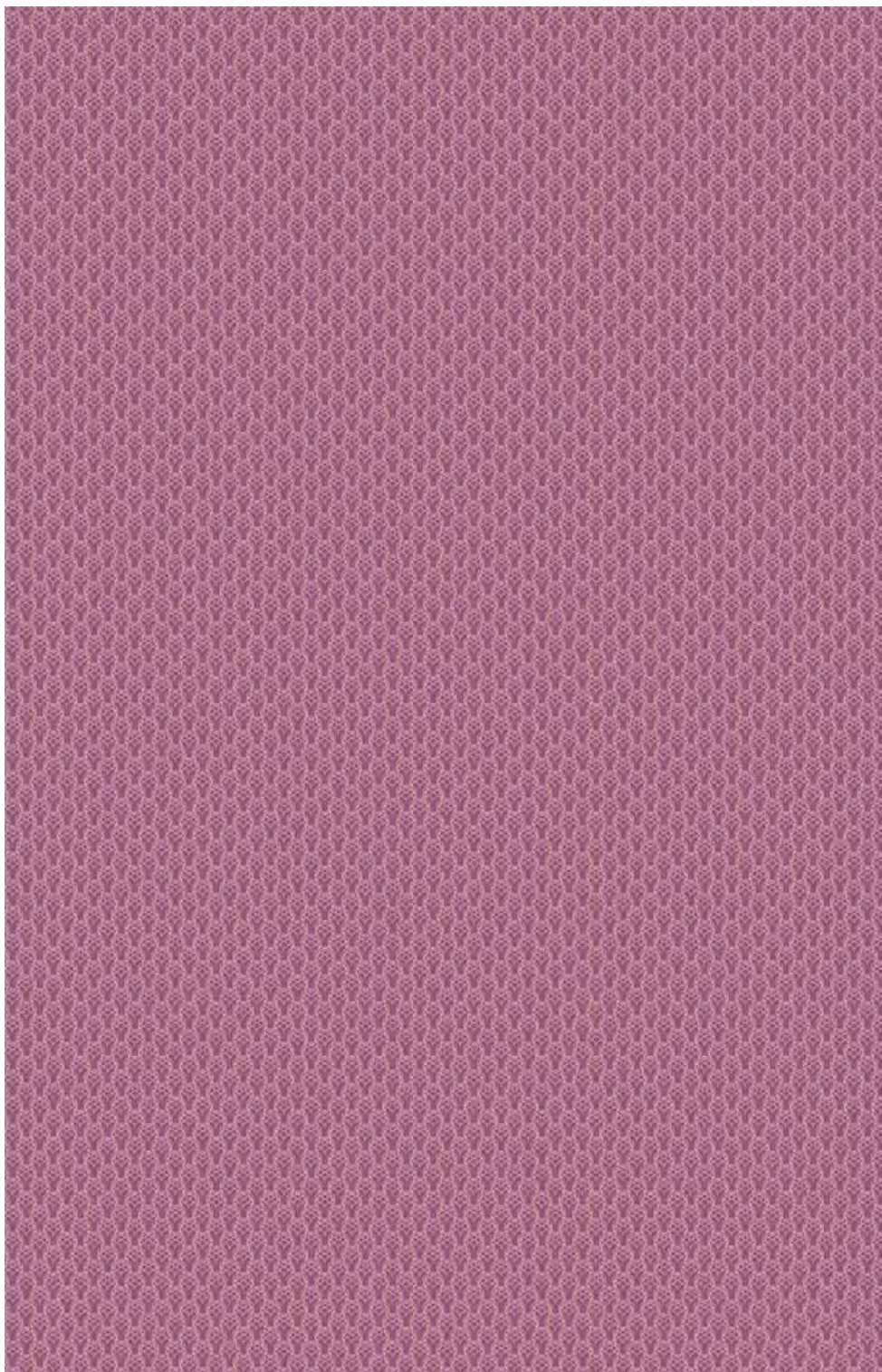


moduli

# artichoke

fin. sei | lucida

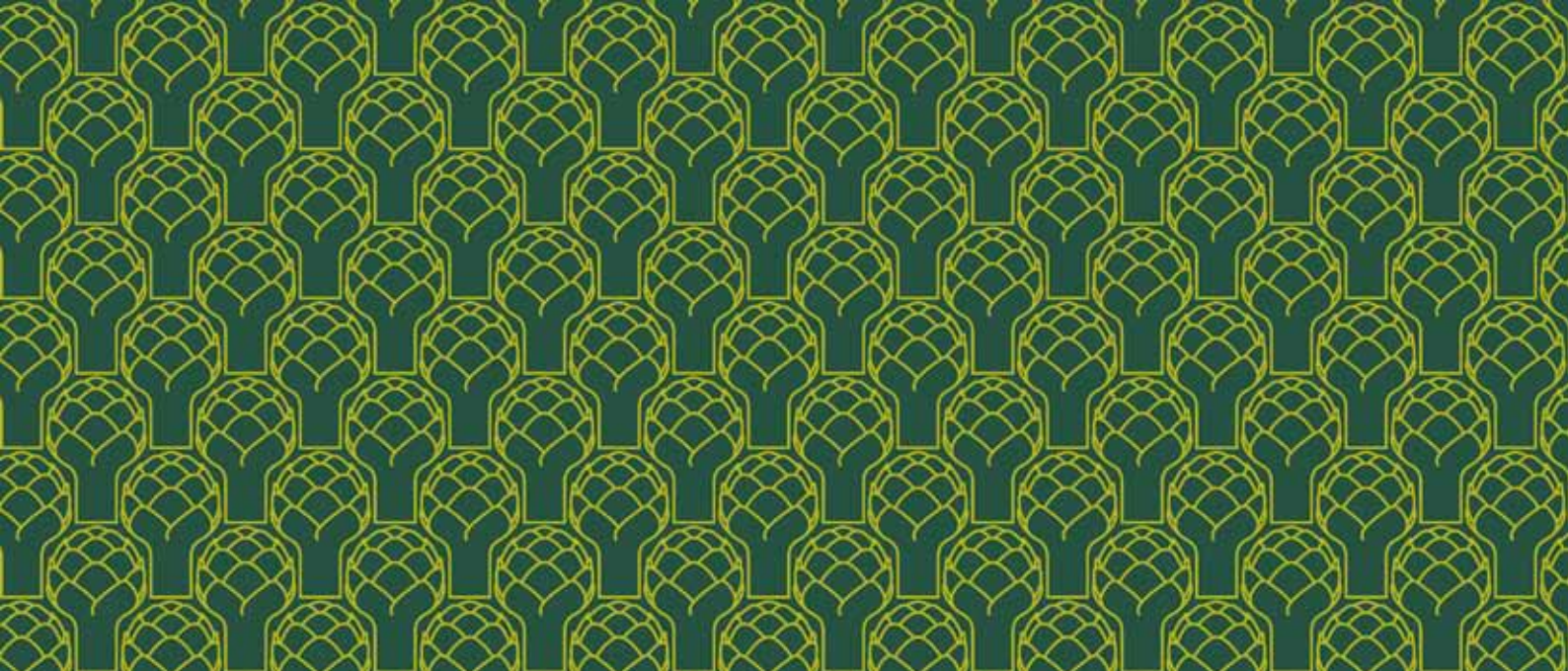
cm. 65



cm. 100

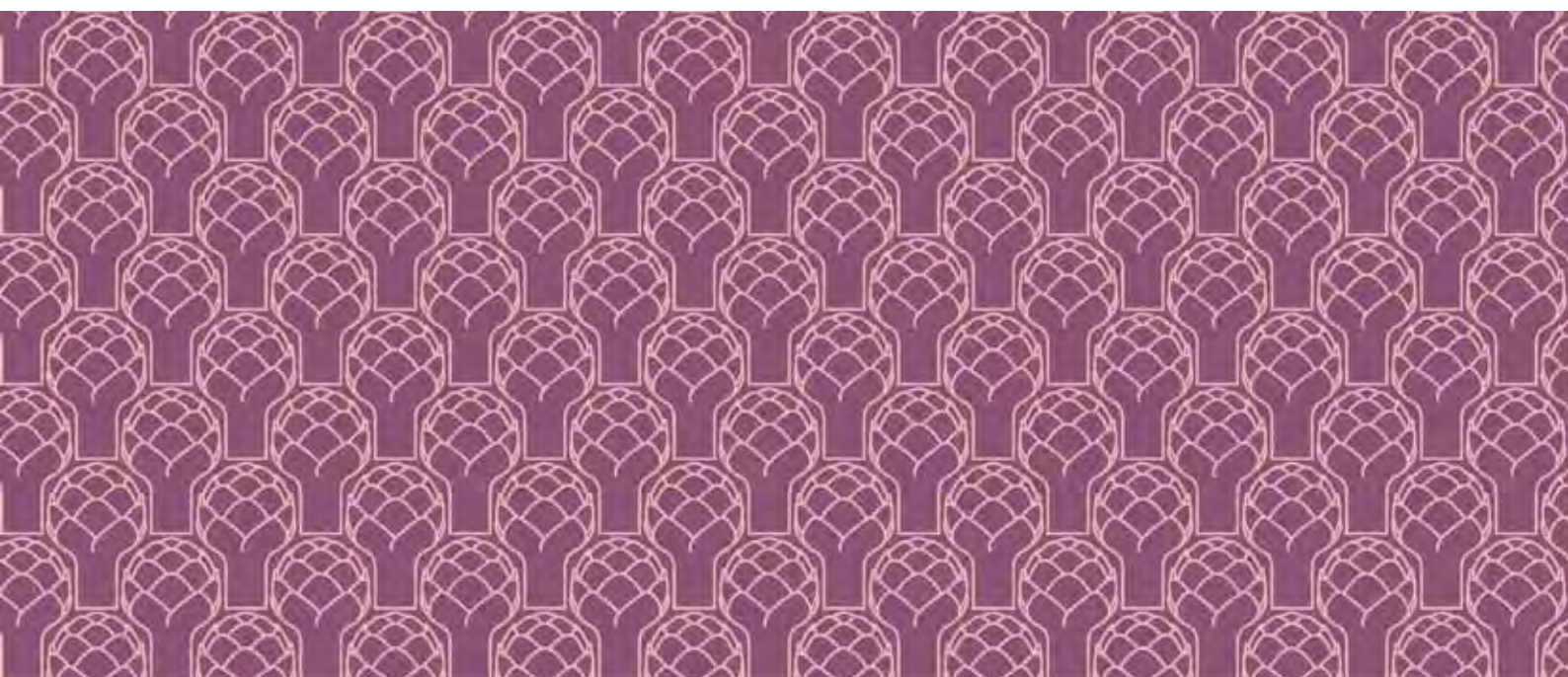
Pannello laminato 305x130 cm  
Porzione di pannello laminato 100x65 cm  
Rappresentazione in scala 1:5

Laminate sheet 305x130 cm  
Part of laminate sheet 100x65 cm  
Scale 1:5



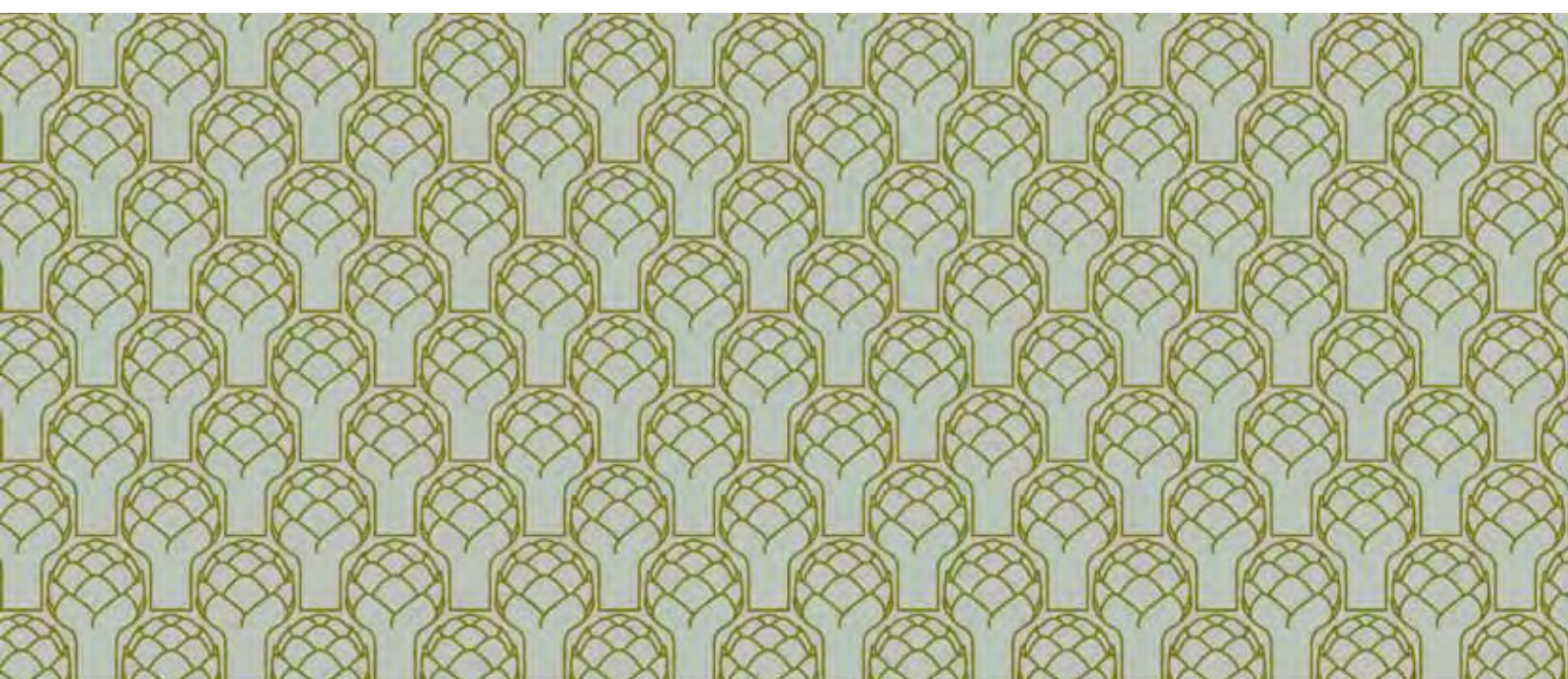
Rappresentazione in scala | Scale 1:1

**artichoke cod. 5722 green**



Rappresentazione in scala | Scale 1:1

**artichoke cod. 5723 violet**



Rappresentazione in scala | Scale 1:1

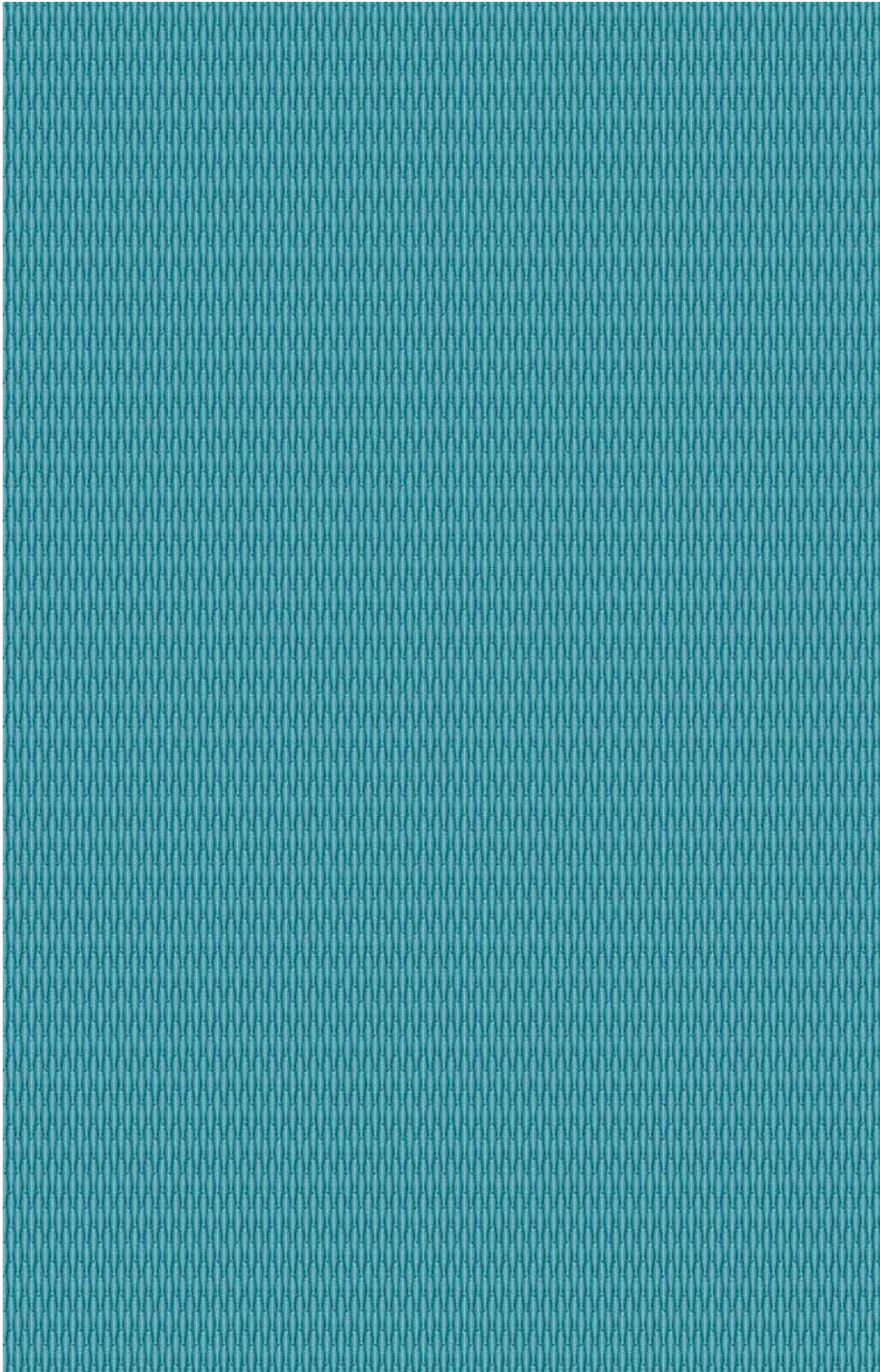
**artichoke cod. 5724 grey/green**

moduli

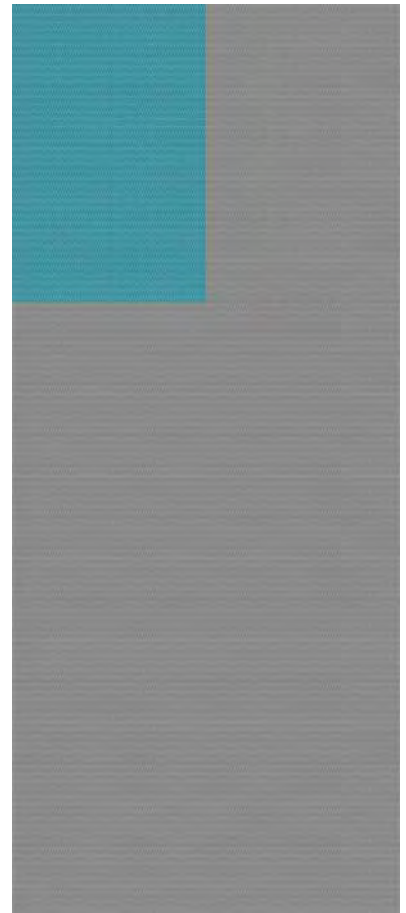
# fishbone

fin. sei | lucida

cm. 65

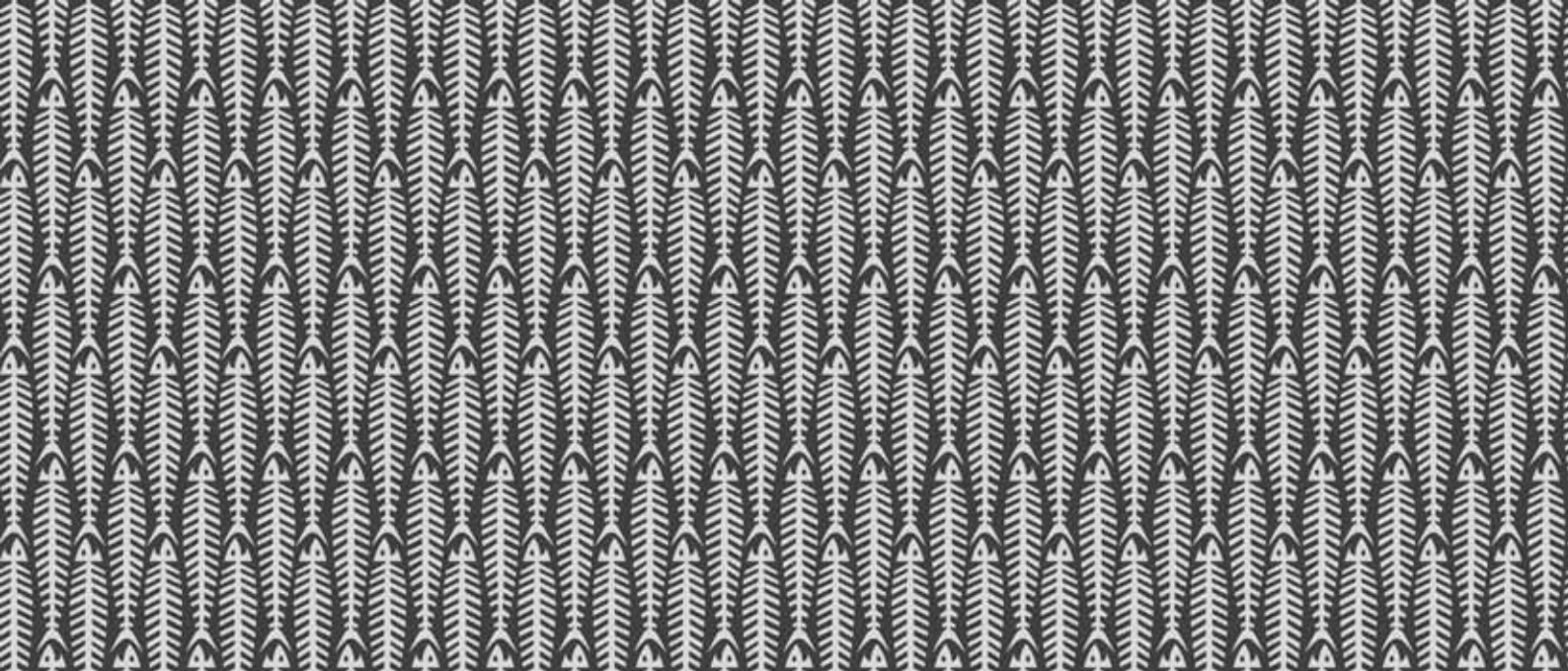


cm. 100



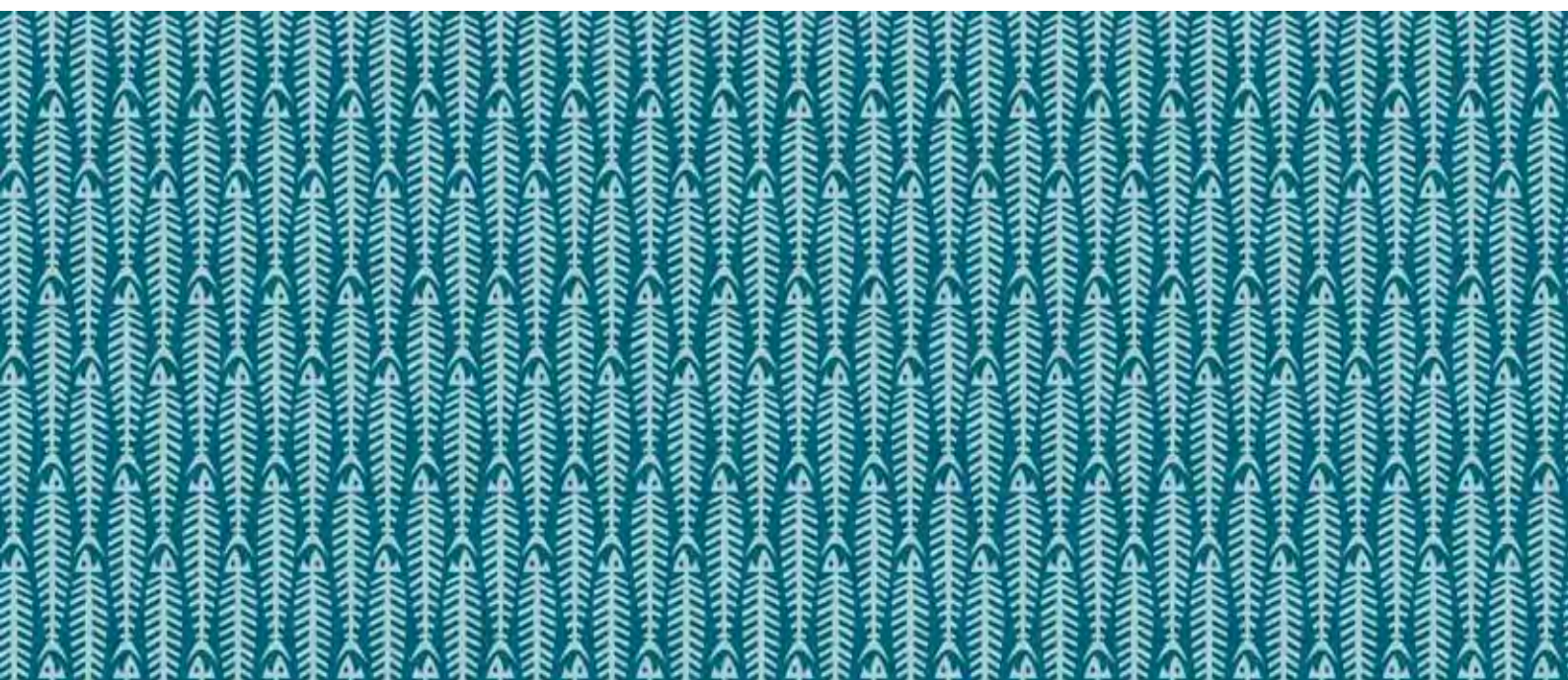
Pannello laminato 305x130 cm  
Porzione di pannello laminato 100x65 cm  
Rappresentazione in scala 1:5

Laminate sheet 305x130 cm  
Part of laminate sheet 100x65 cm  
Scale 1:5



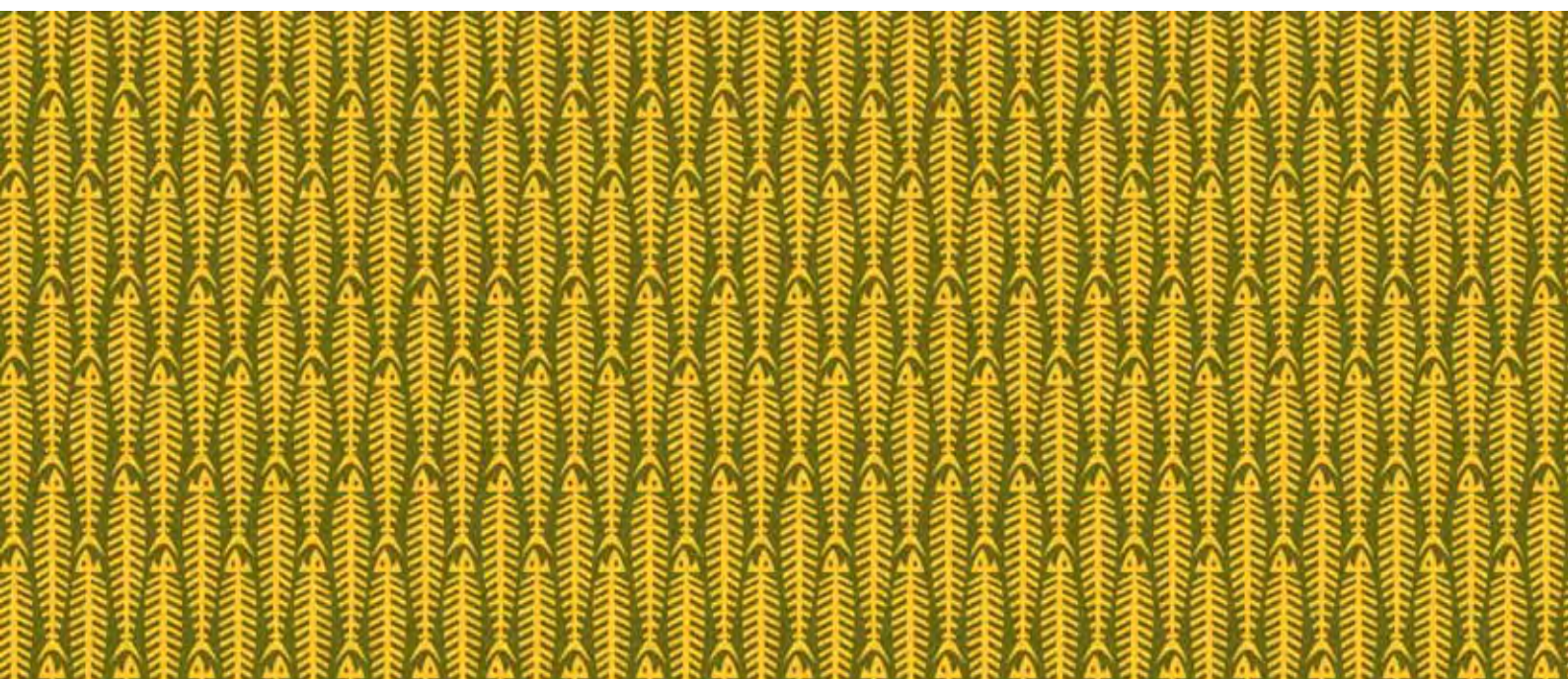
Rappresentazione in scala | Scale 1:1

**fishbone cod. 5725 grey**



Rappresentazione in scala | Scale 1:1

**fishbone cod. 5726 blue**



Rappresentazione in scala | Scale 1:1

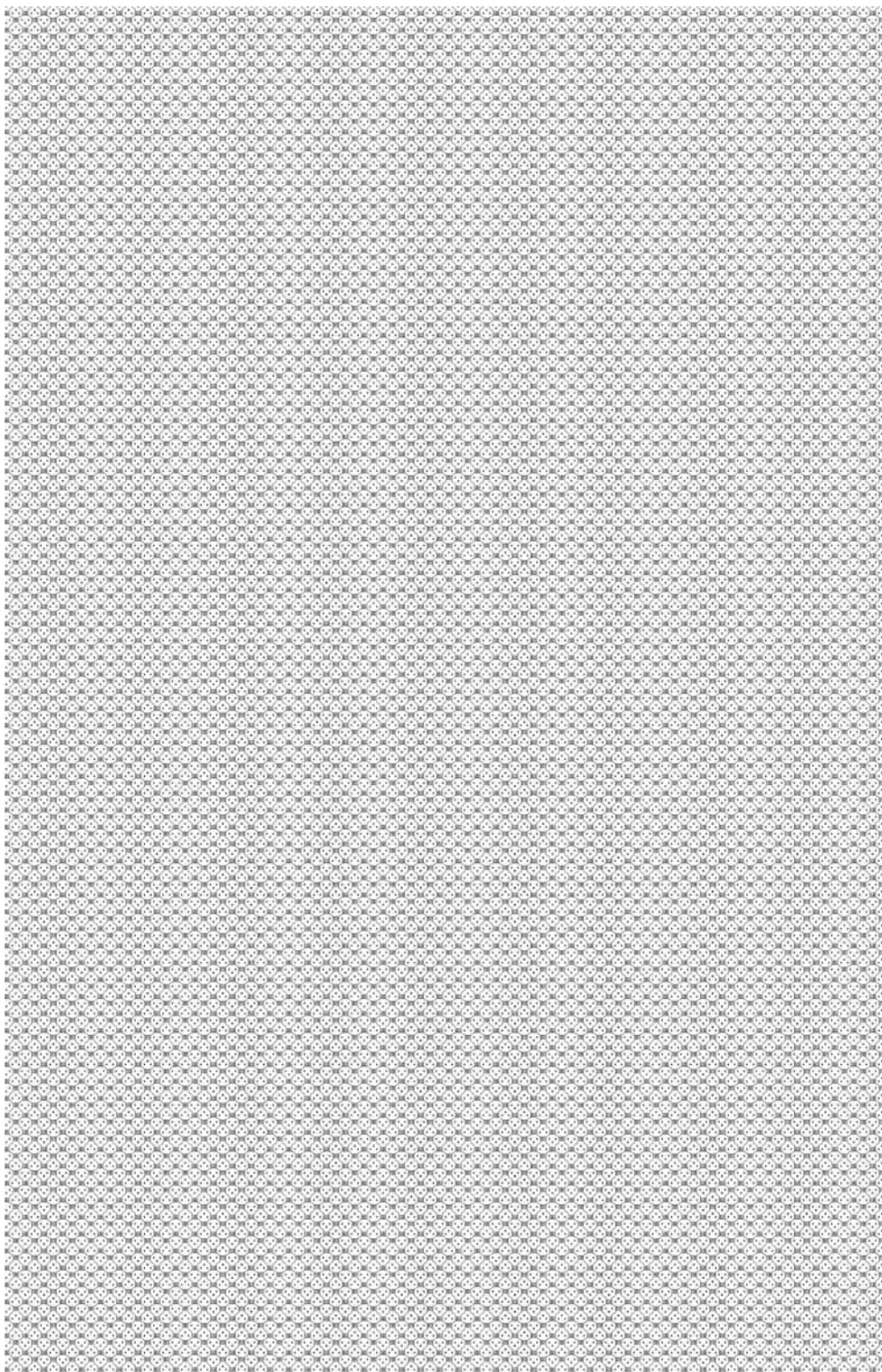
**fishbone cod. 5727 yellow**

moduli

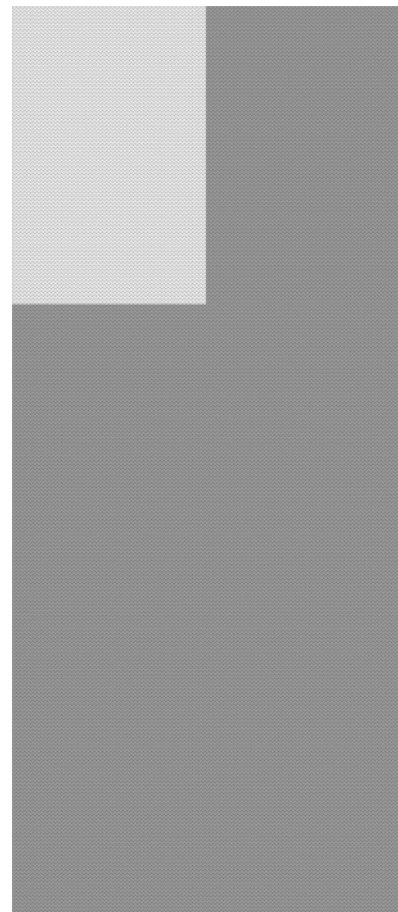
# knock-out

fin. sei | lucida

cm. 65



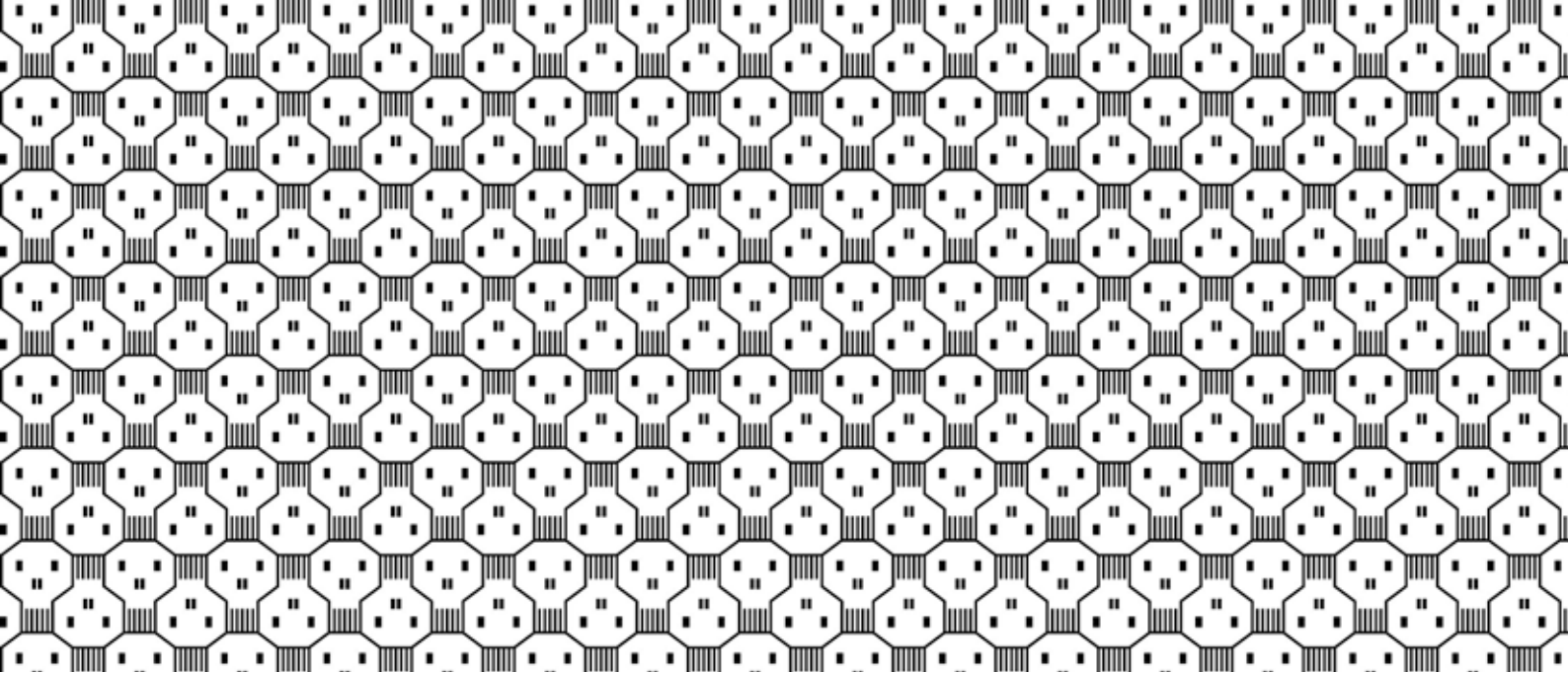
cm. 100



Pannello laminato 305x130 cm  
Porzione di pannello laminato 100x65 cm  
Rappresentazione in scala 1:5

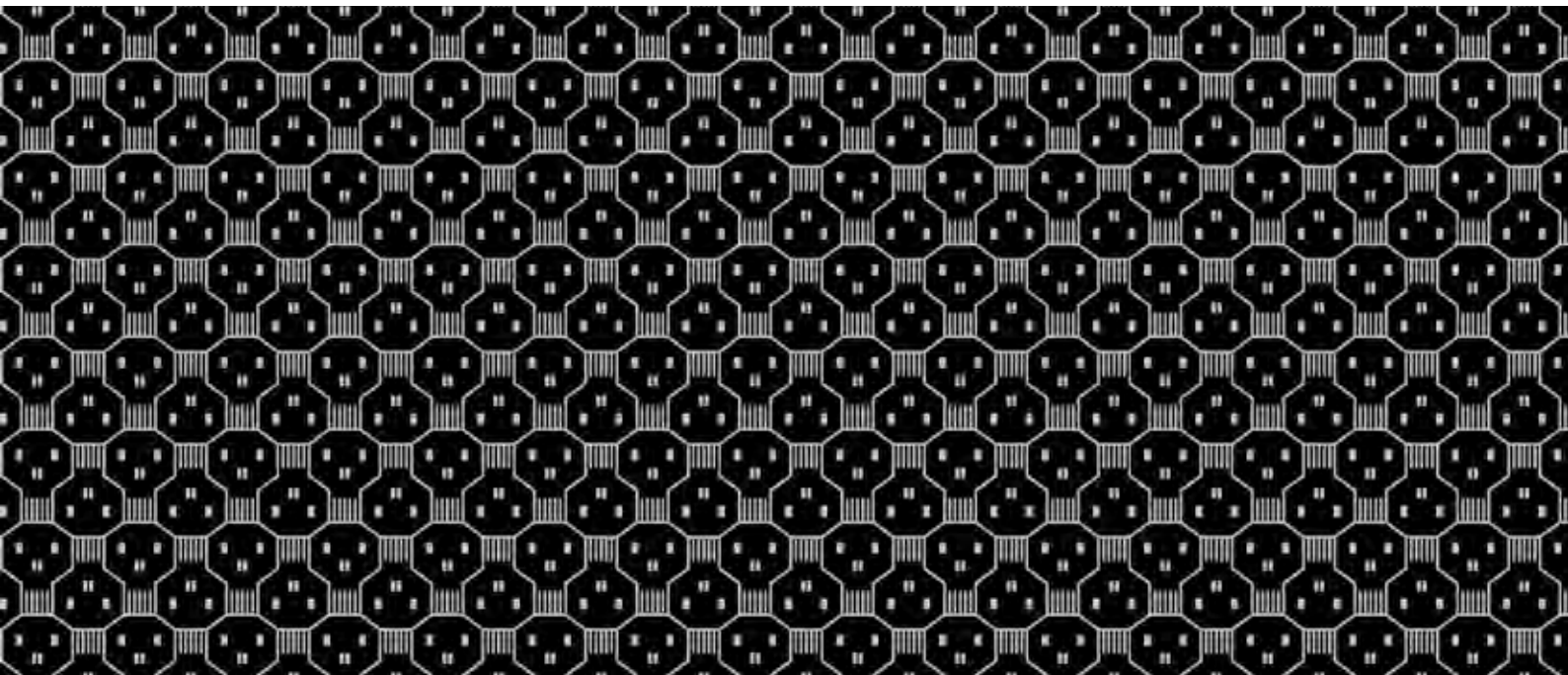
Laminate sheet 305x130 cm  
Part of laminate sheet 100x65 cm  
Scale 1:5





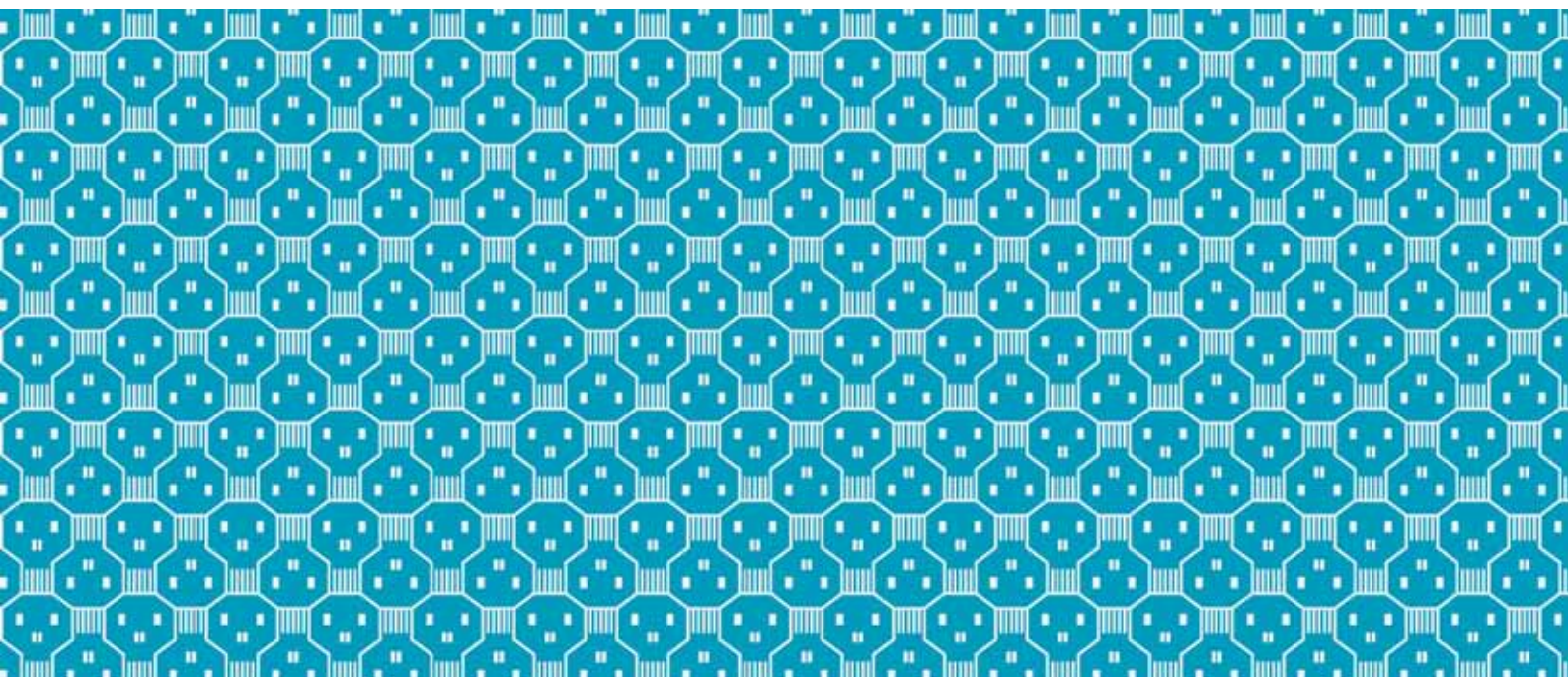
Rappresentazione in scala | Scale 1:1

**knock-out cod. 5728 white**



Rappresentazione in scala | Scale 1:1

**knock-out cod. 5729 black**



Rappresentazione in scala | Scale 1:1

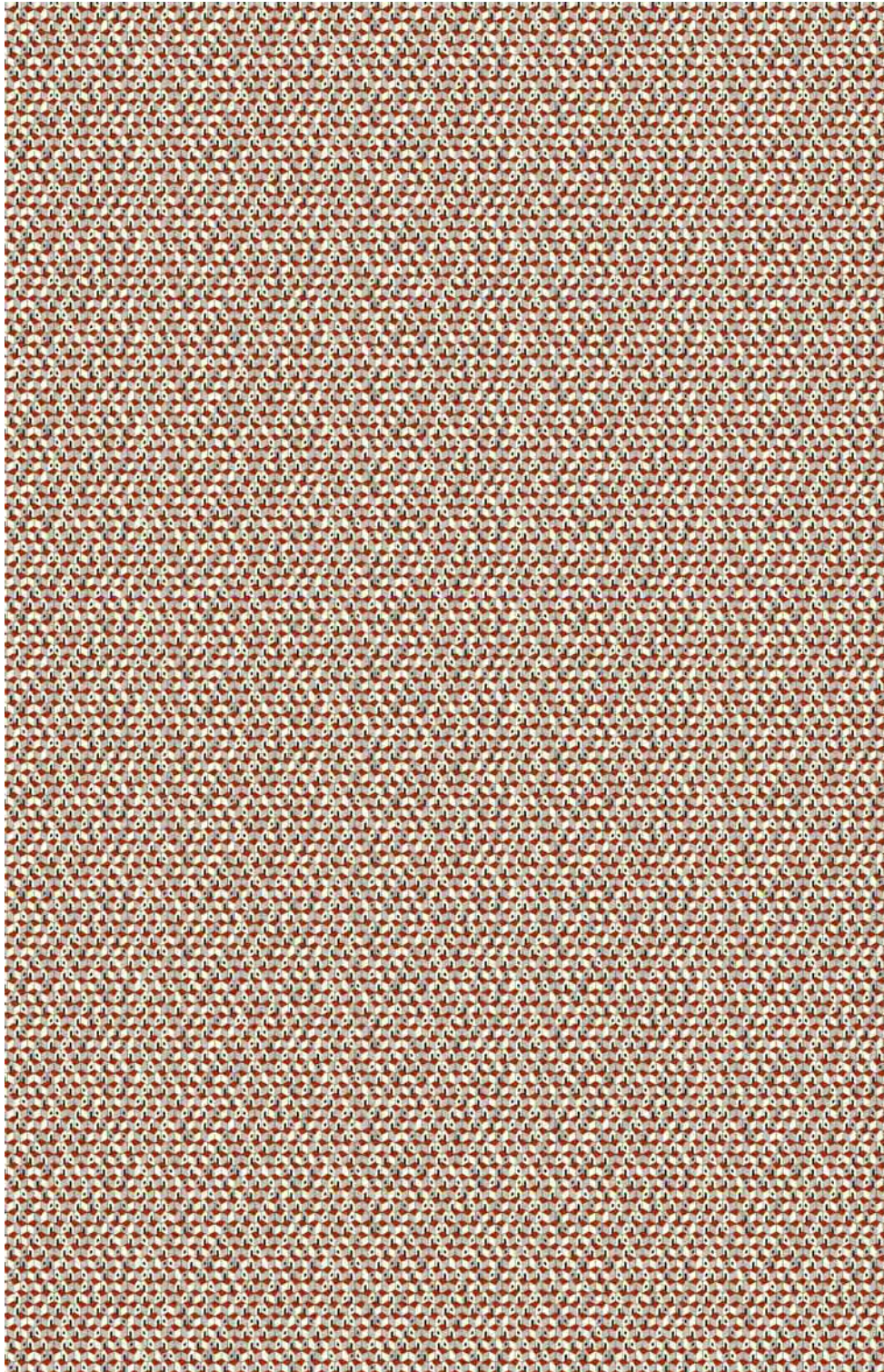
**knock-out cod. 5730 blue**

moduli

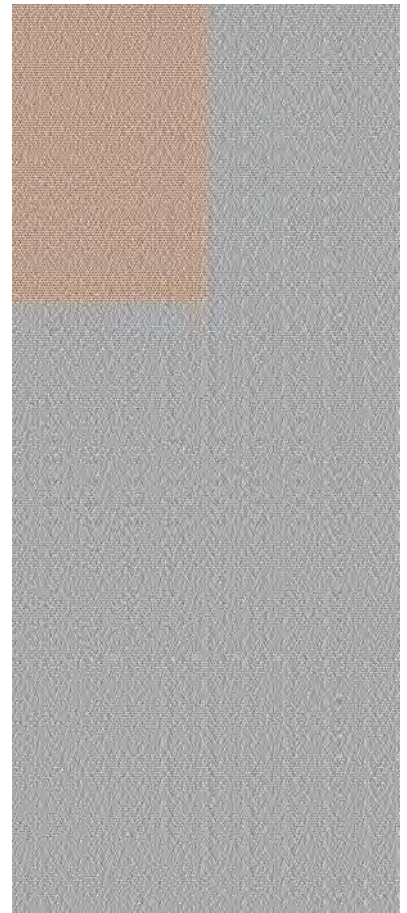
# paesemio

fin. sei | lucida

cm. 65

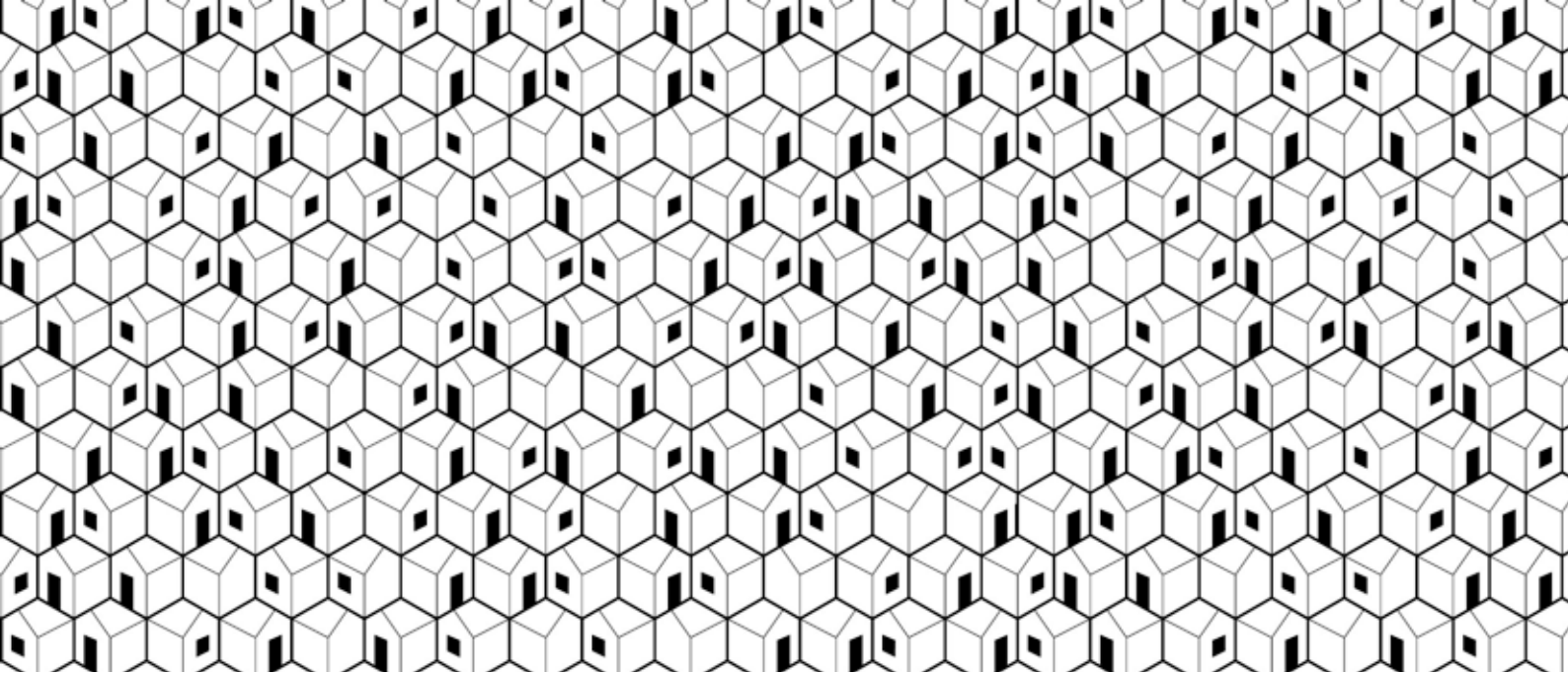


cm. 100



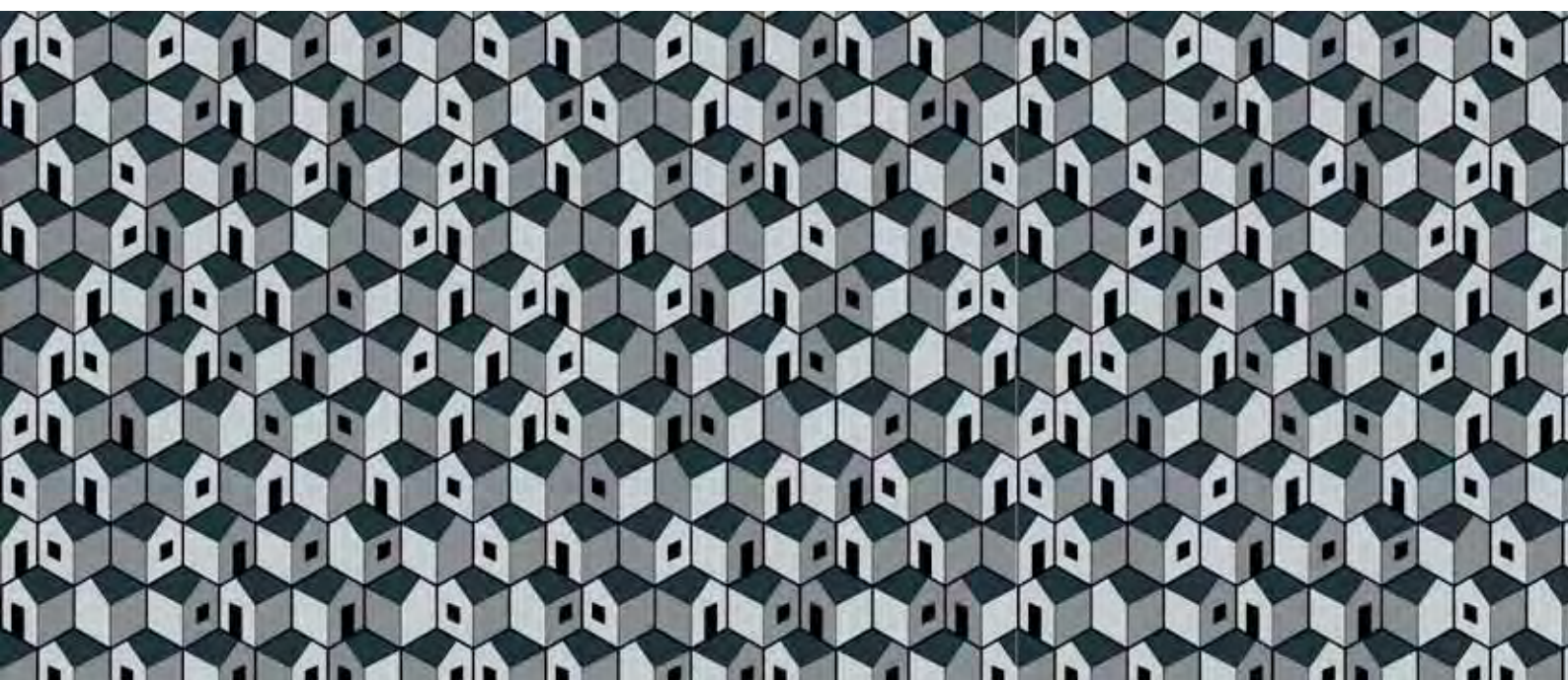
Pannello laminato 305x130 cm  
Porzione di pannello laminato 100x65 cm  
Rappresentazione in scala 1:5

Laminate sheet 305x130 cm  
Part of laminate sheet 100x65 cm  
Scale 1:5



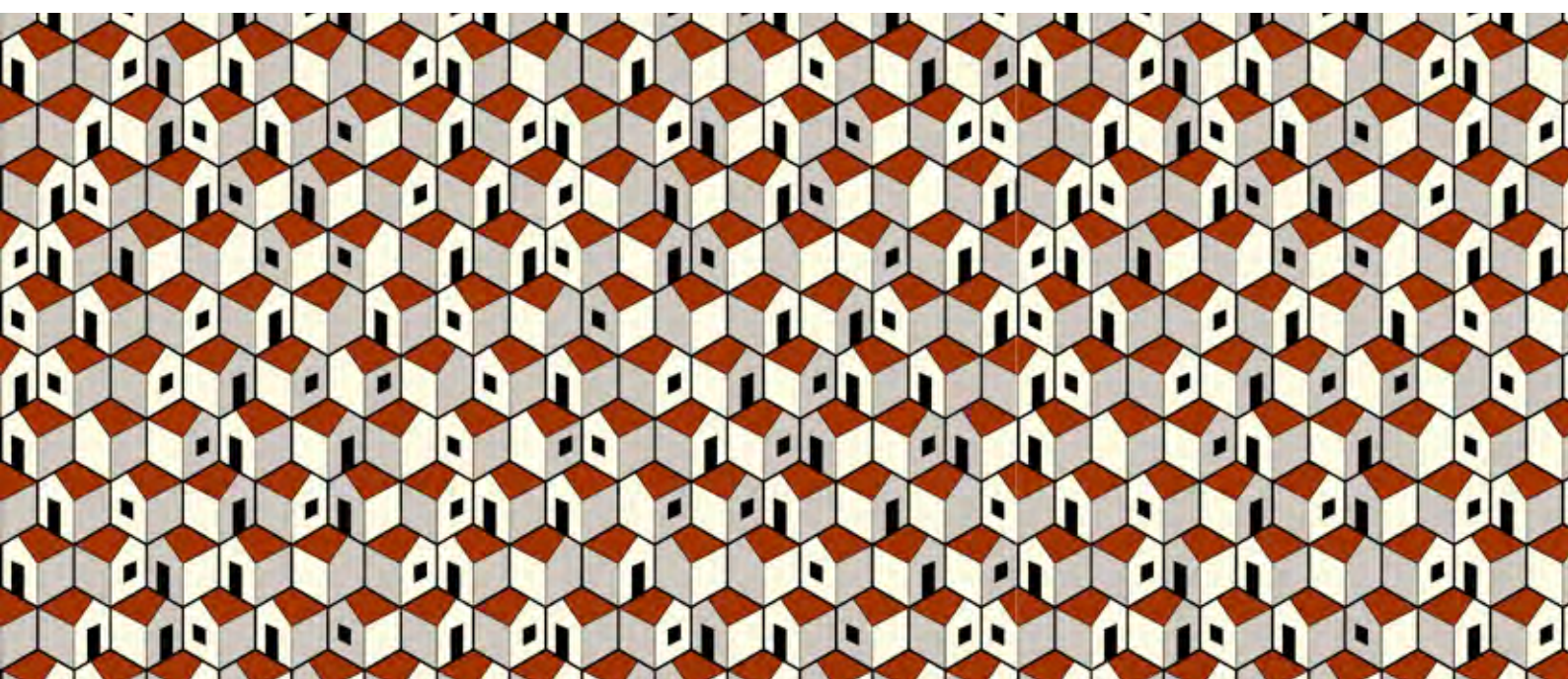
Rappresentazione in scala | Scale 1:1

paesemio cod. 5731 b/w



Rappresentazione in scala | Scale 1:1

paesemio cod. 5732 night



Rappresentazione in scala | Scale 1:1

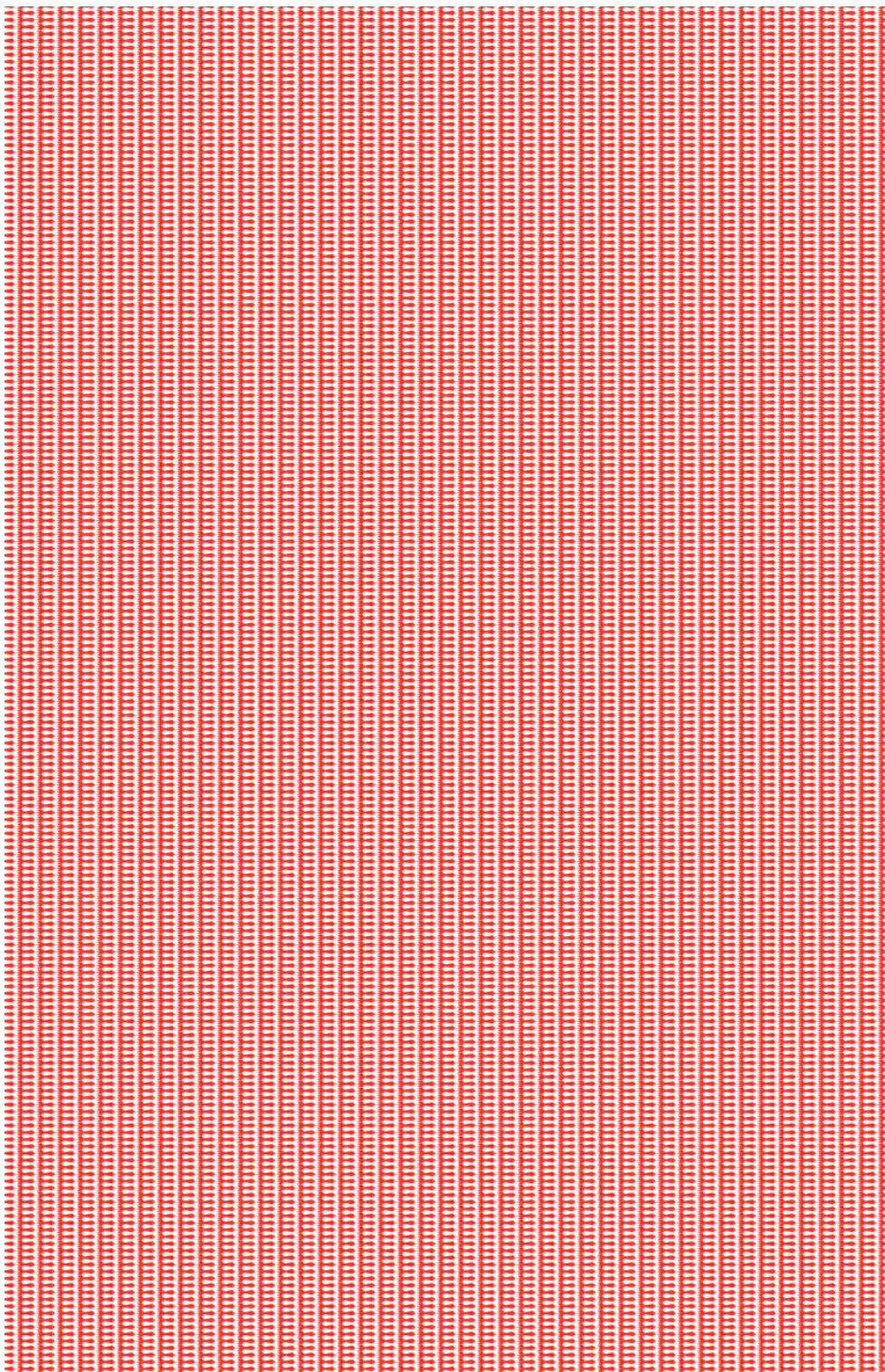
paesemio cod. 5733 day

moduli

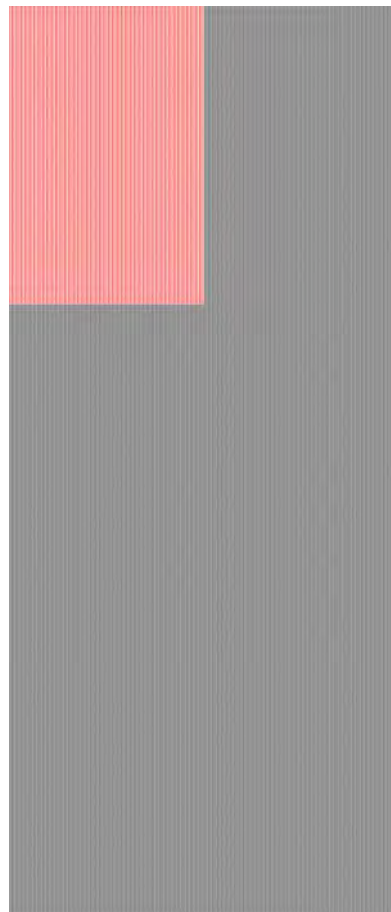
# rockets

fin. lucida

cm. 65

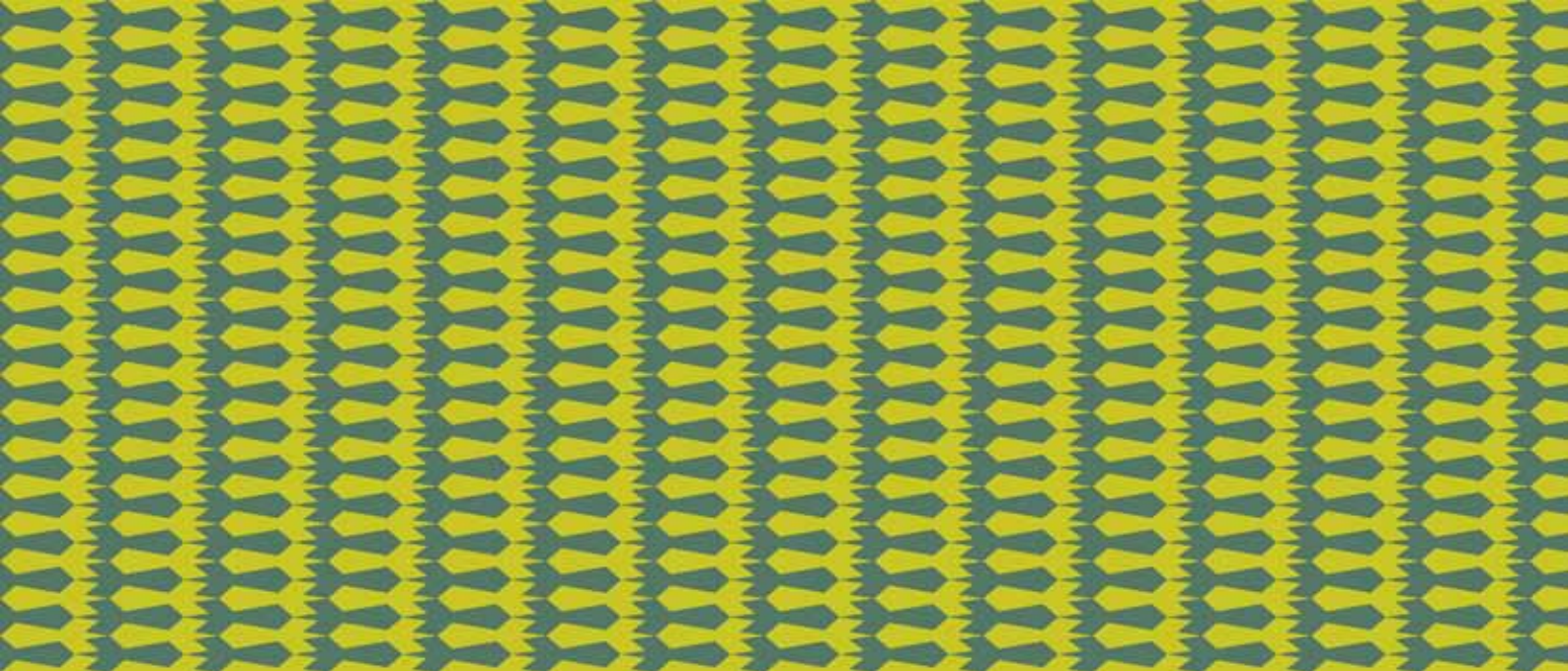


cm. 100



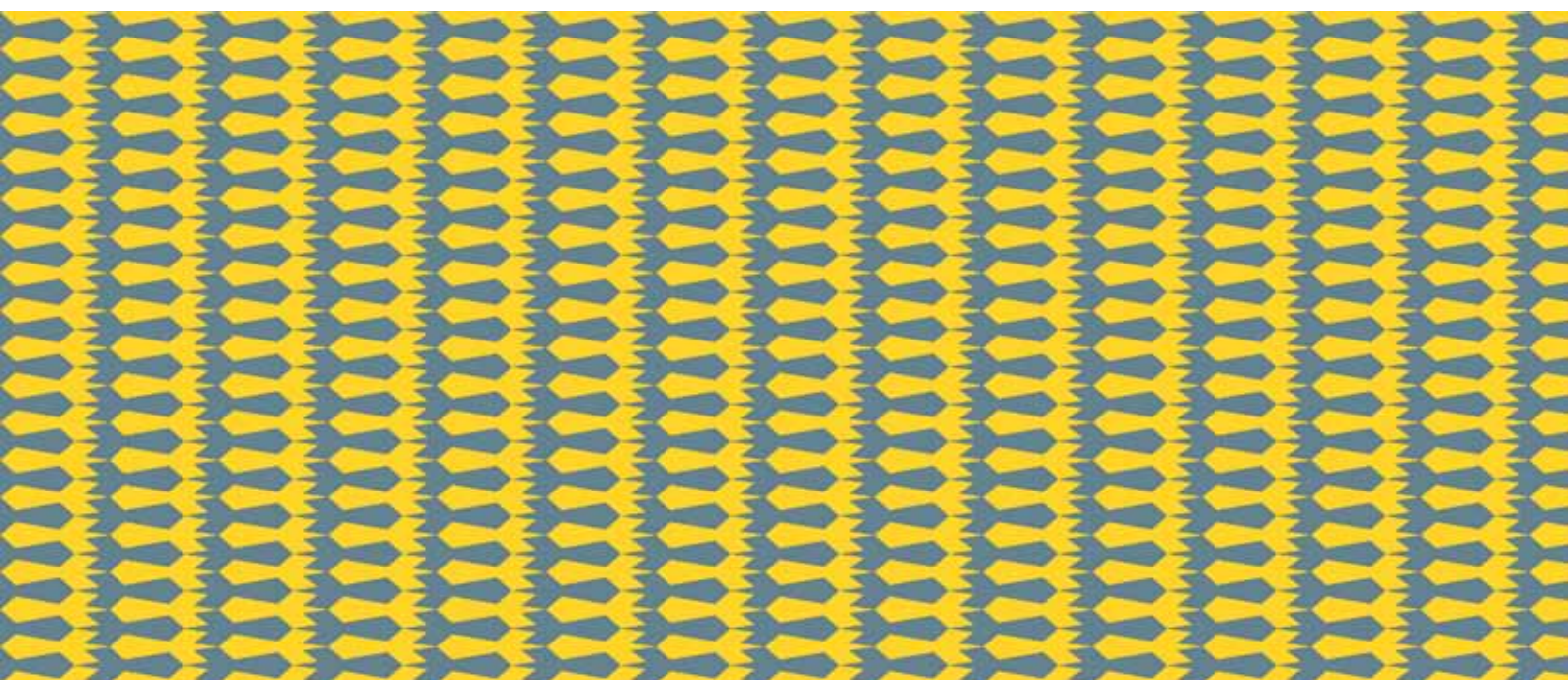
Pannello laminato 305x130 cm  
Porzione di pannello laminato 100x65 cm  
Rappresentazione in scala 1:5

Laminate sheet 305x130 cm  
Part of laminate sheet 100x65 cm  
Scale 1:5



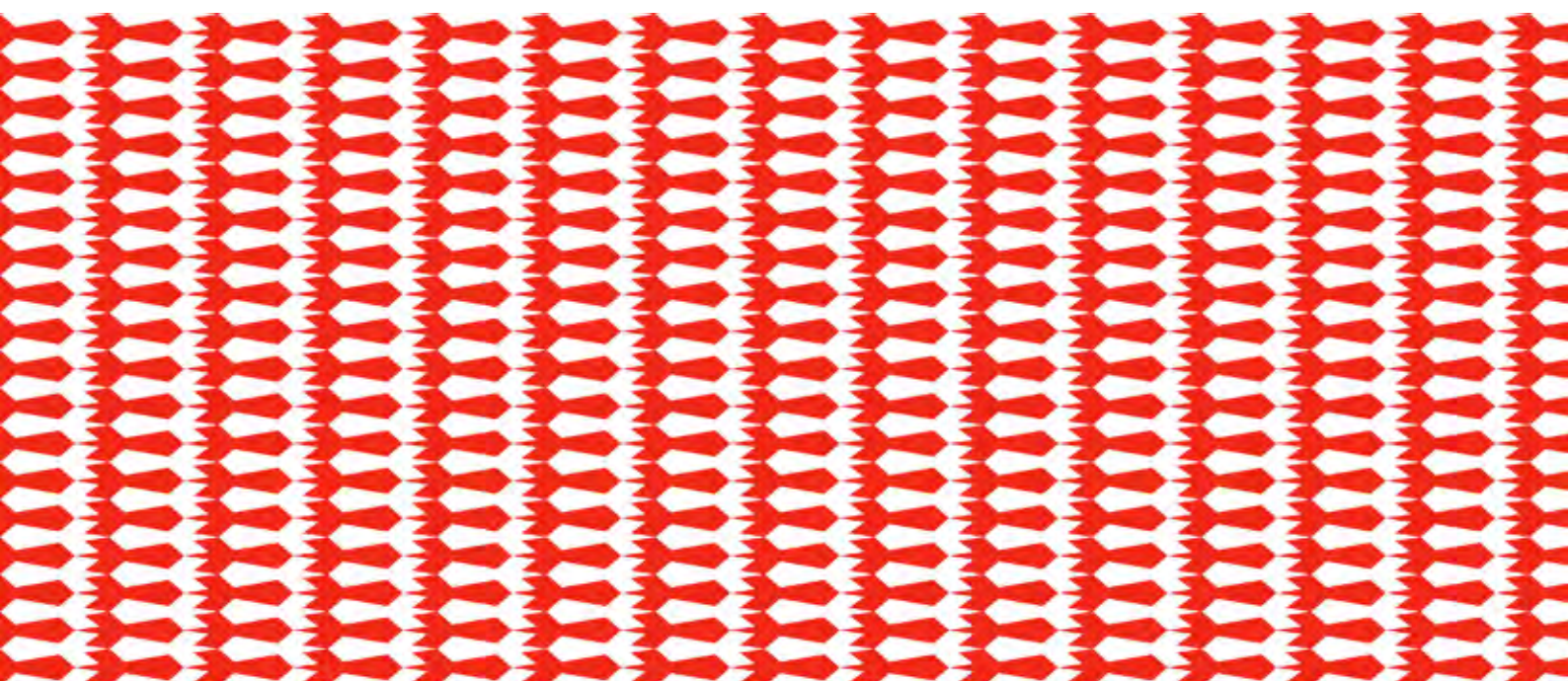
Rappresentazione in scala | Scale 1:1

**rockets cod. 5734 green**



Rappresentazione in scala | Scale 1:1

**rockets cod. 5735 yellow**



Rappresentazione in scala | Scale 1:1

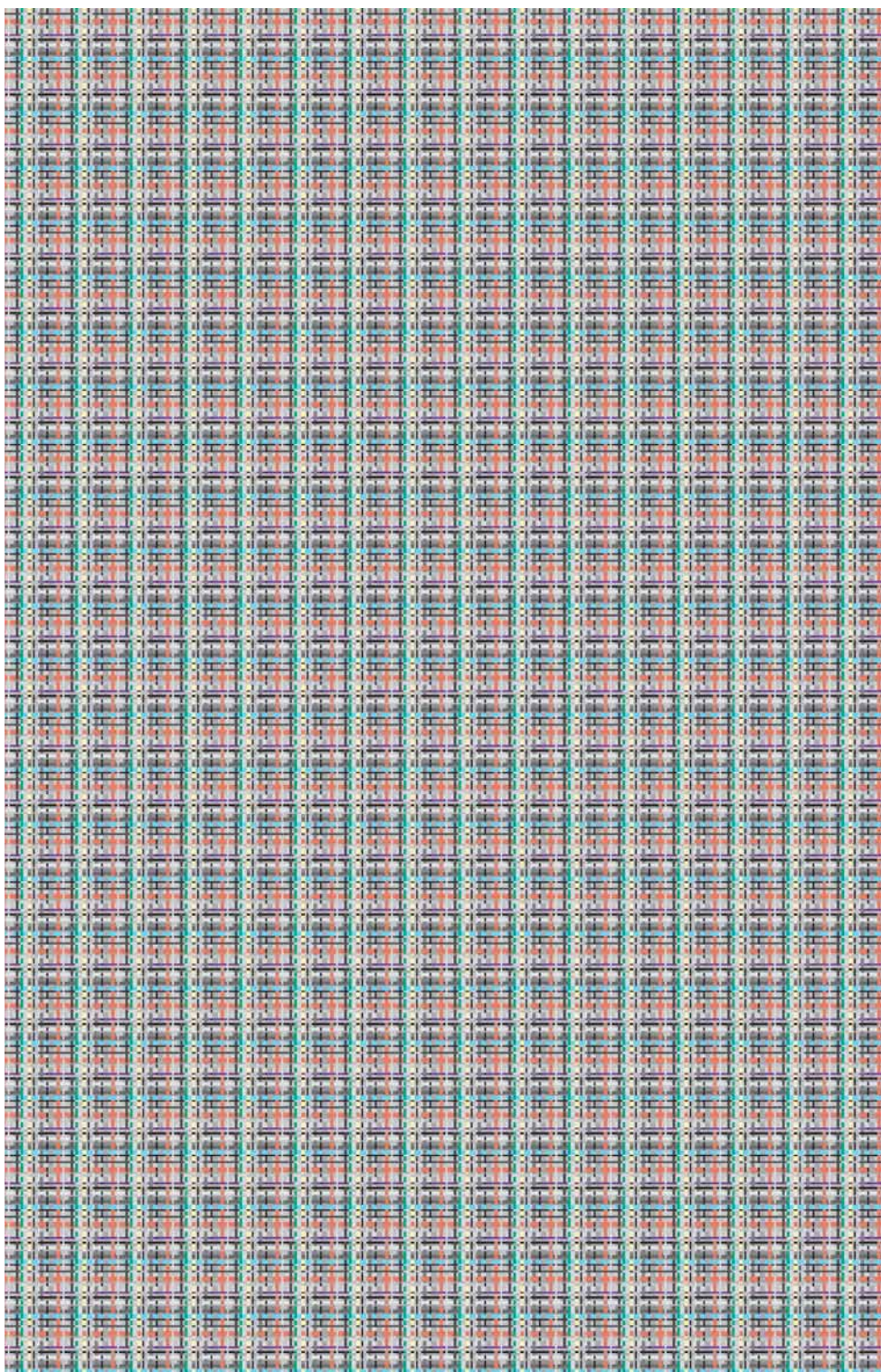
**rockets cod. 5736 red**

moduli

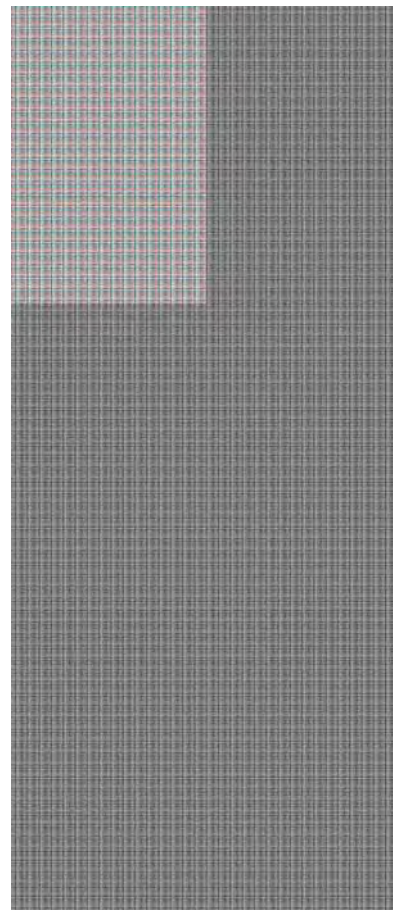
# tartan

fin. lucida

cm. 65



cm. 100



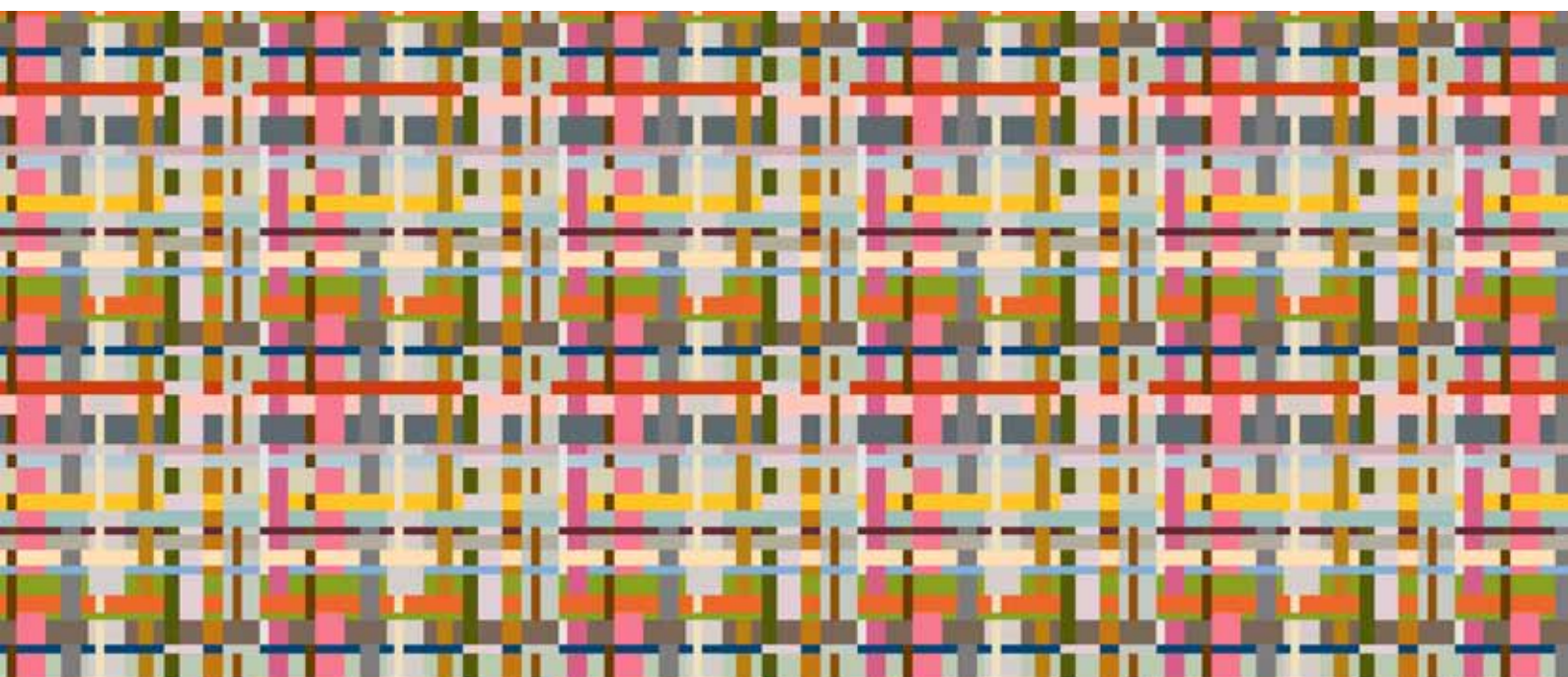
Pannello laminato 305x130 cm  
Porzione di pannello laminato 100x65 cm  
Rappresentazione in scala 1:5

Laminate sheet 305x130 cm  
Part of laminate sheet 100x65 cm  
Scale 1:5



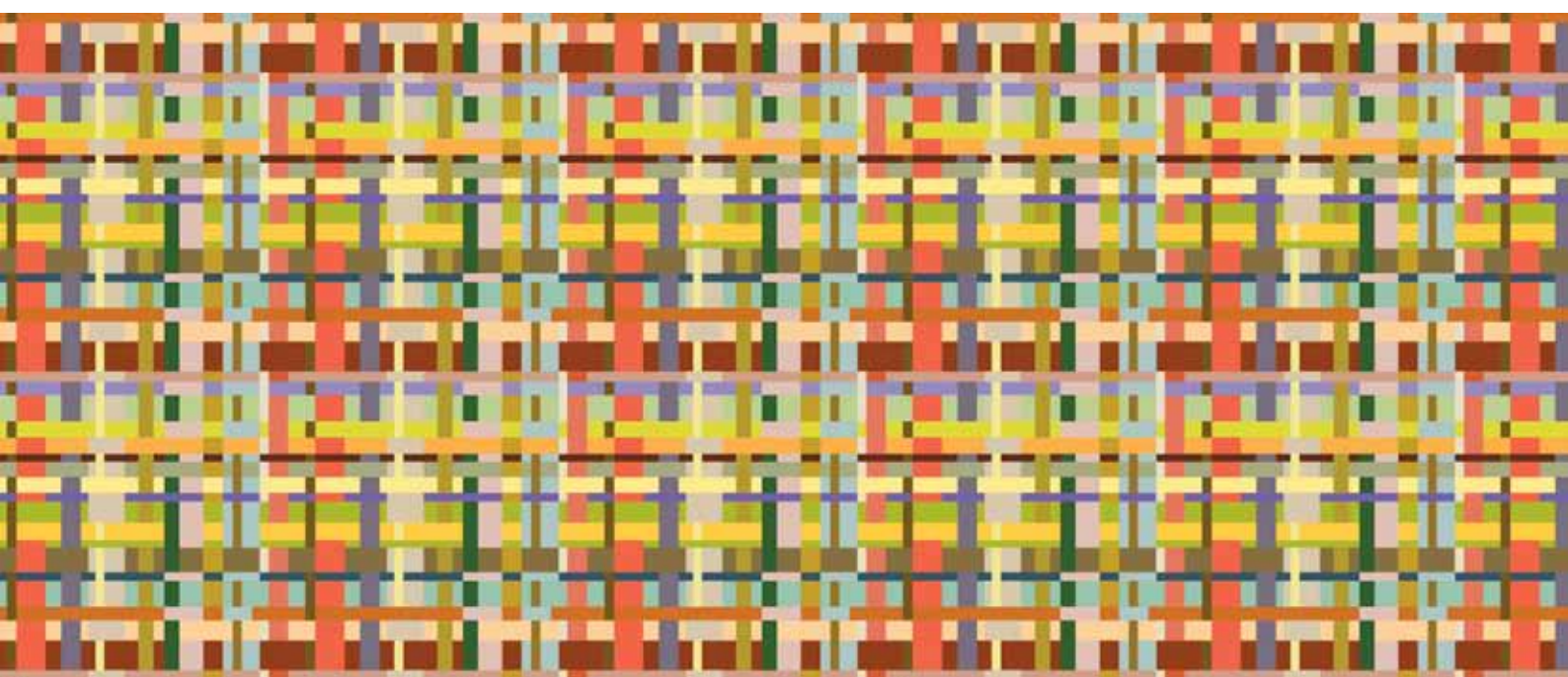
Rappresentazione in scala | Scale 1:1

**tartan cod. 5737 grey**



Rappresentazione in scala | Scale 1:1

**tartan cod. 5738 pink**



Rappresentazione in scala | Scale 1:1

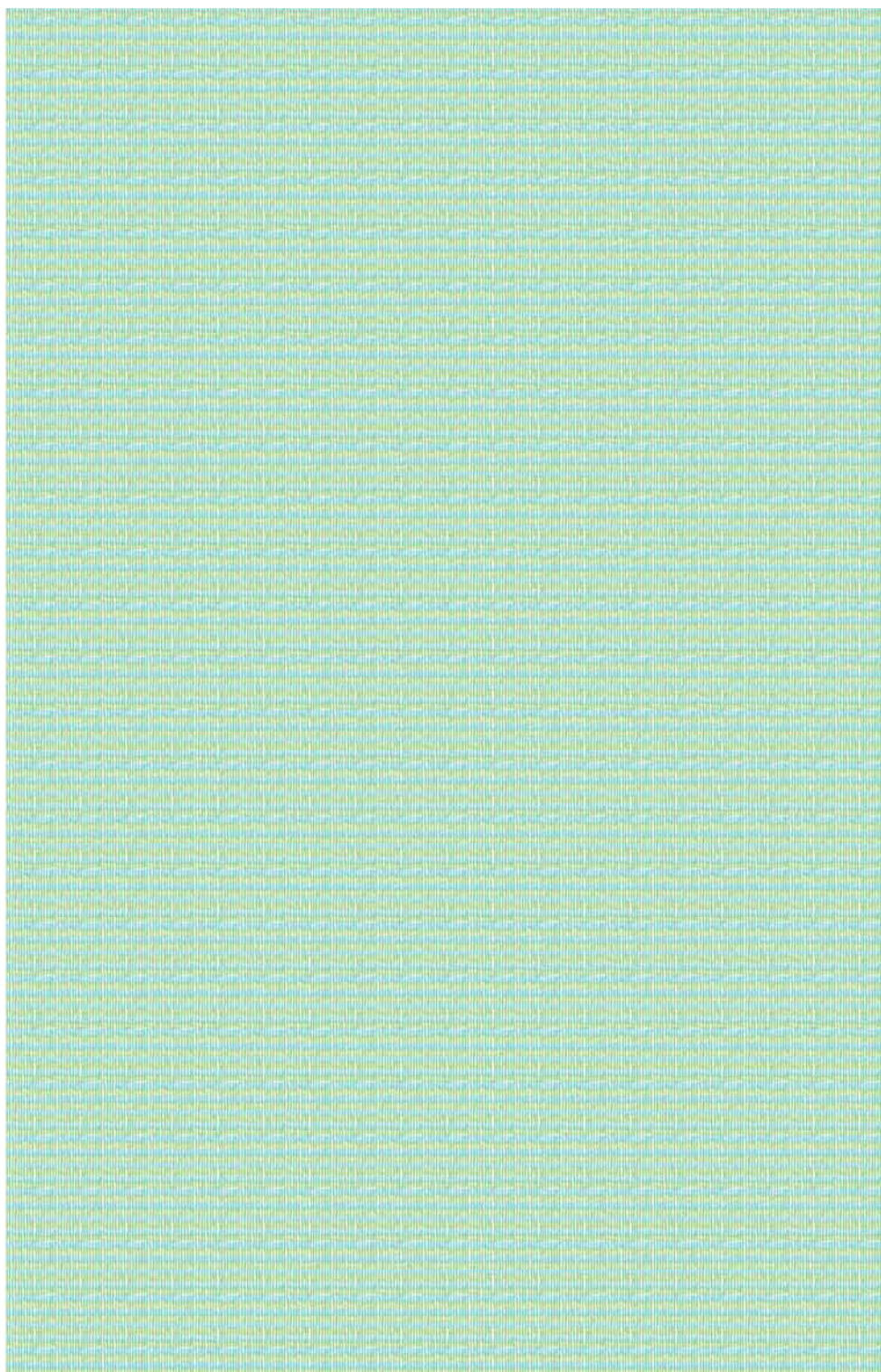
**tartan cod. 5739 yellow**

fatto a mano

**betulla**

fin. longline

cm. 65



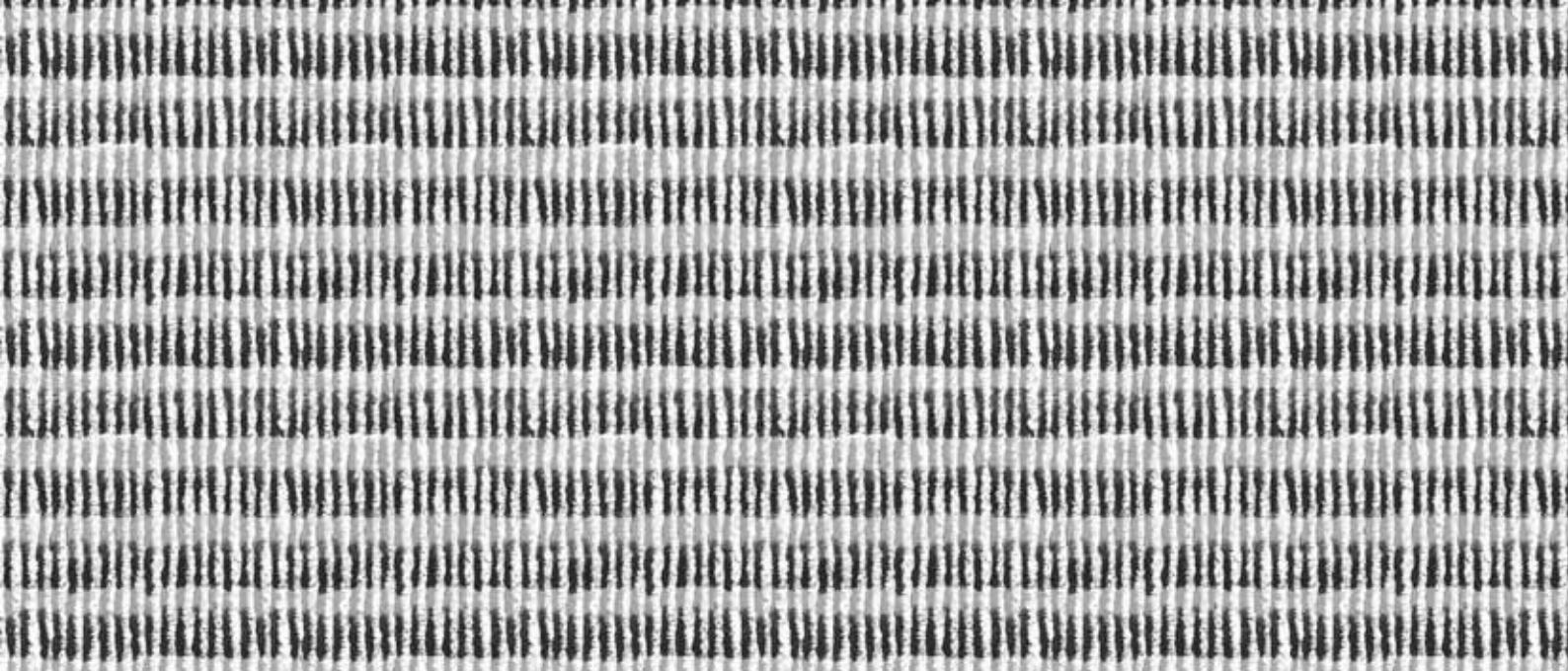
cm. 100



Pannello laminato 305x130 cm  
Porzione di pannello laminato 100x65 cm  
Rappresentazione in scala 1:5

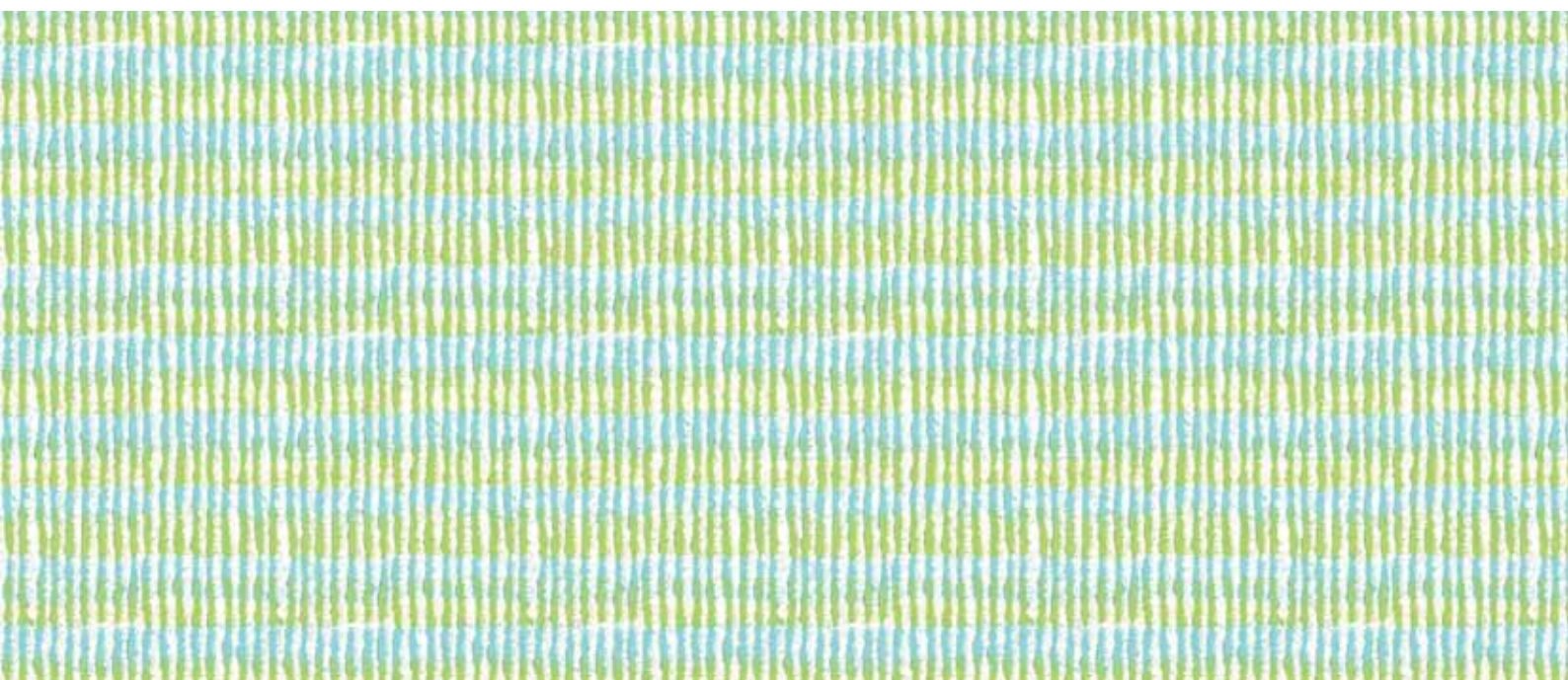
Laminate sheet 305x130 cm  
Part of laminate sheet 100x65 cm  
Scale 1:5





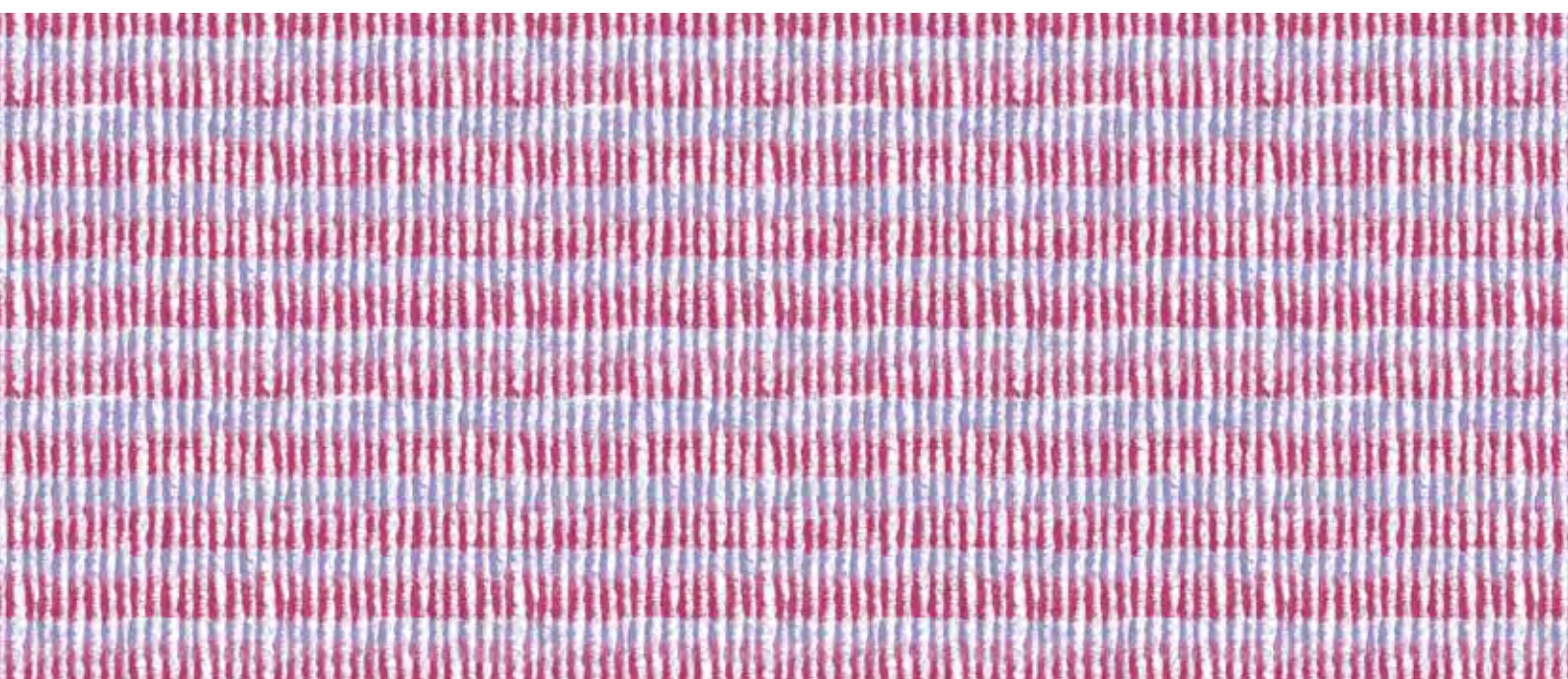
Rappresentazione in scala | Scale 1:1

betulla cod. 5740 b/w



Rappresentazione in scala | Scale 1:1

betulla cod. 5741 green



Rappresentazione in scala | Scale 1:1

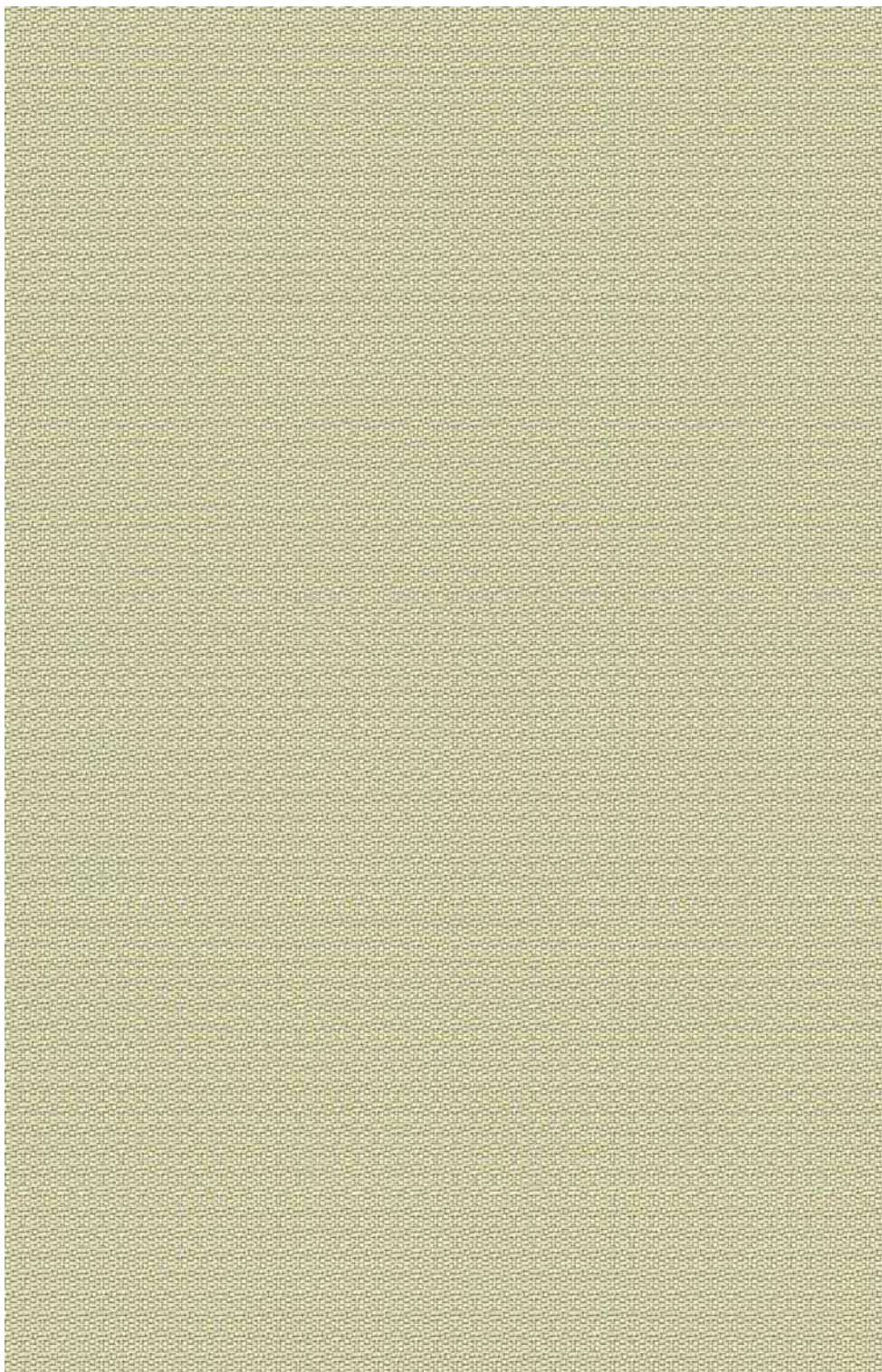
betulla cod. 5742 purple

fatto a mano

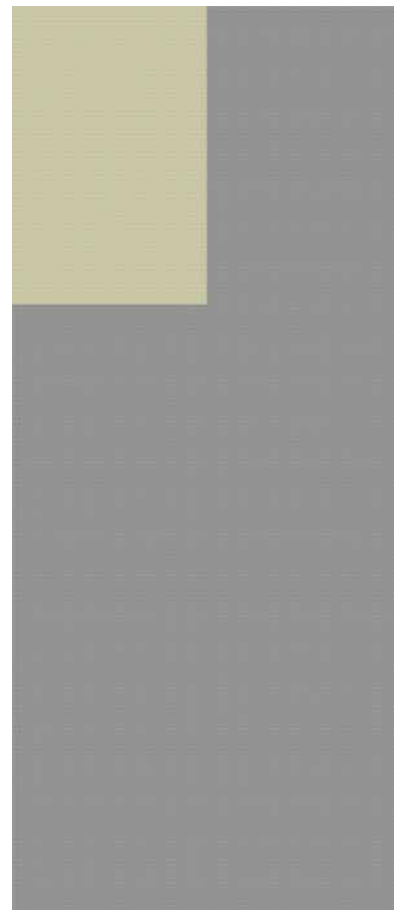
# canvas

fin. grana 2

cm. 65

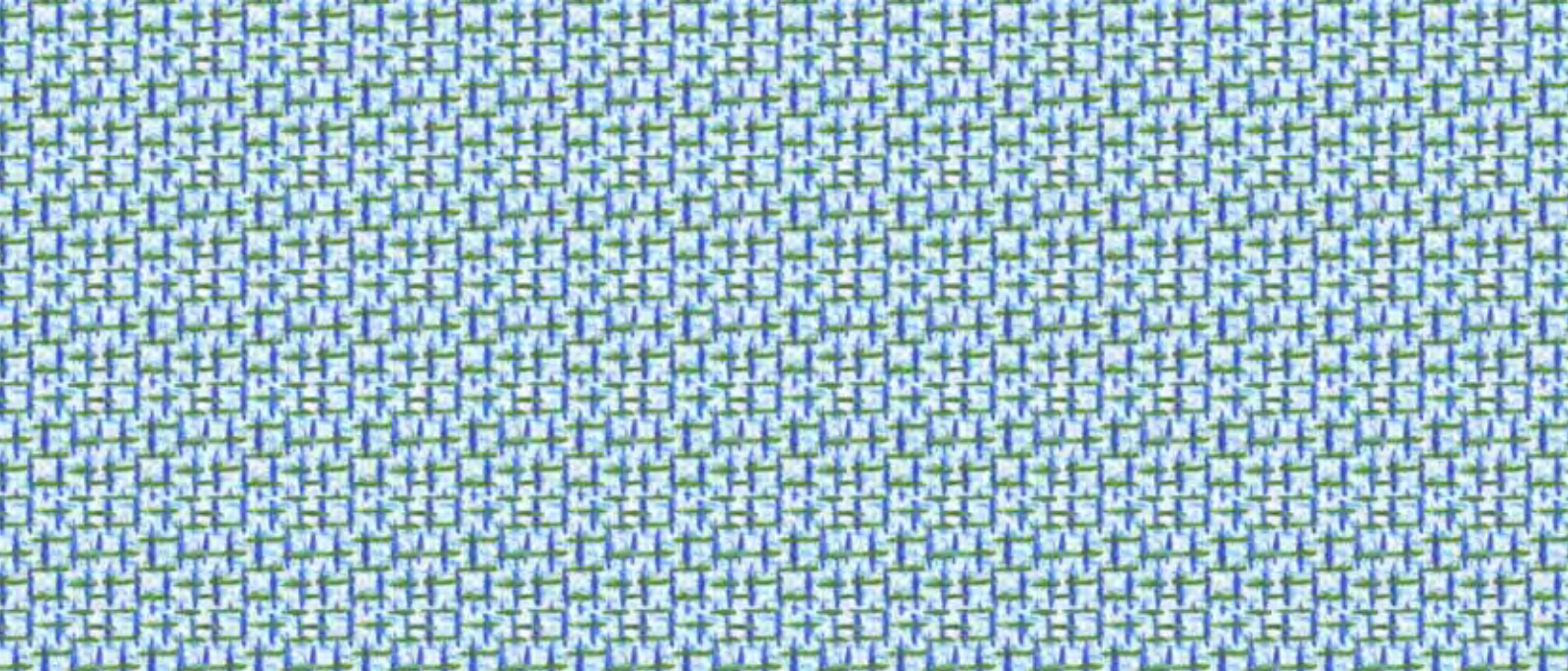


cm. 100



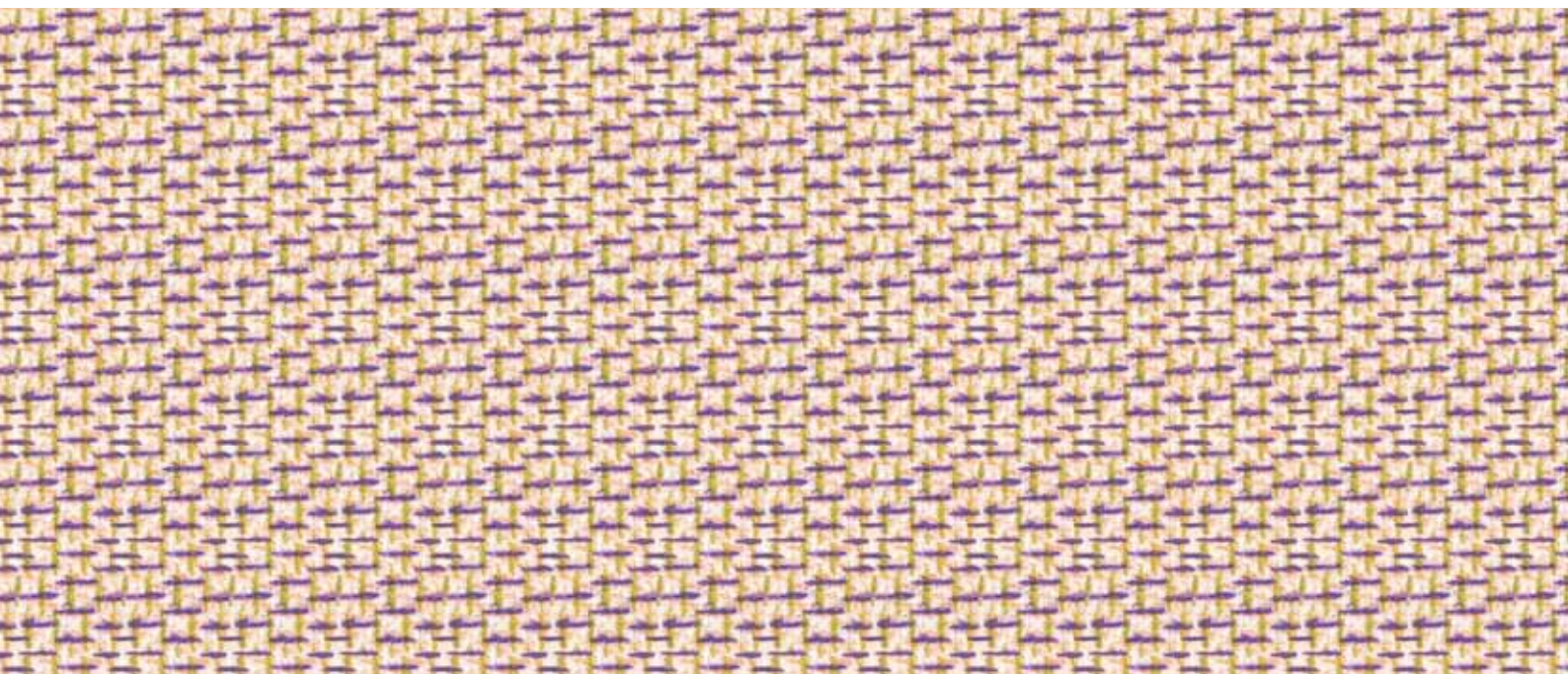
Pannello laminato 305x130 cm  
Porzione di pannello laminato 100x65 cm  
Rappresentazione in scala 1:5

Laminate sheet 305x130 cm  
Part of laminate sheet 100x65 cm  
Scale 1:5



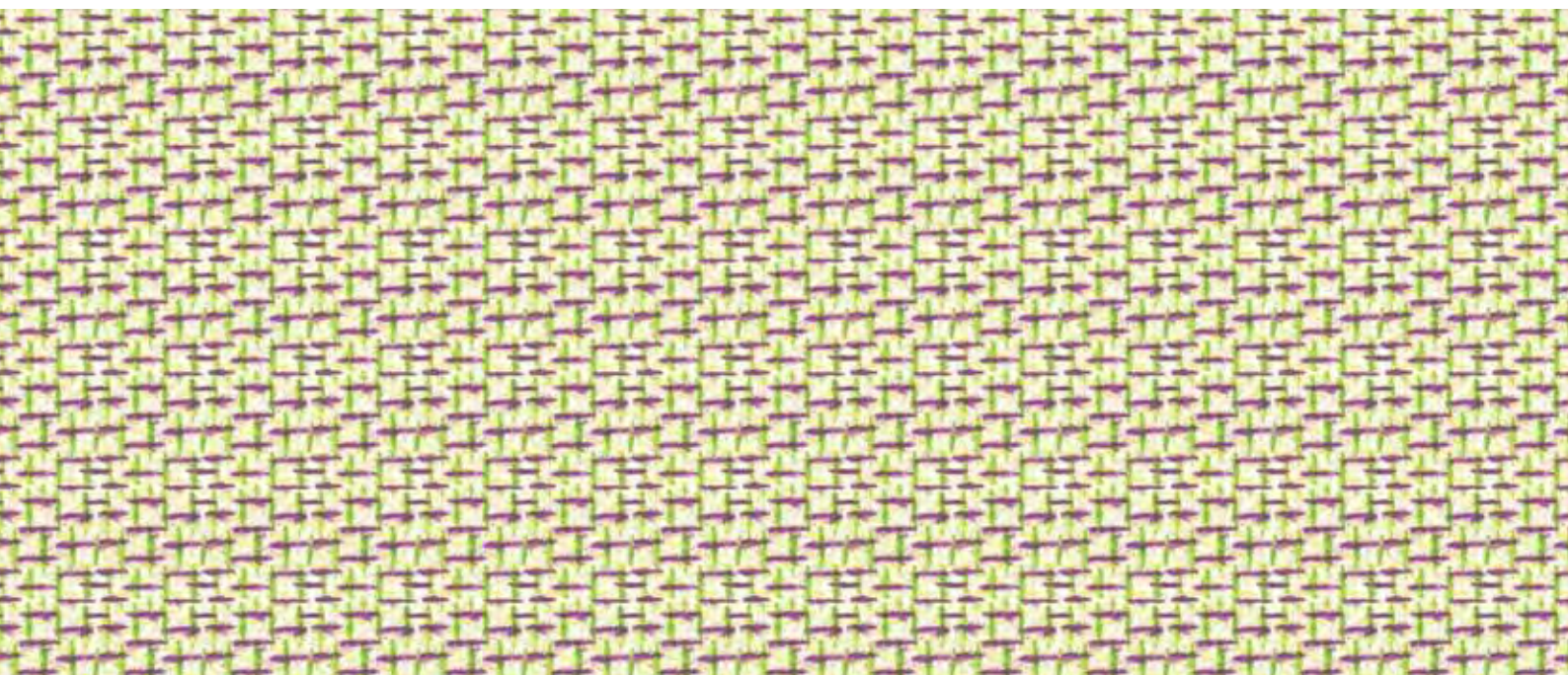
Rappresentazione in scala | Scale 1:1

**canvas cod. 5743 blue**



Rappresentazione in scala | Scale 1:1

**canvas cod. 5744 orange**



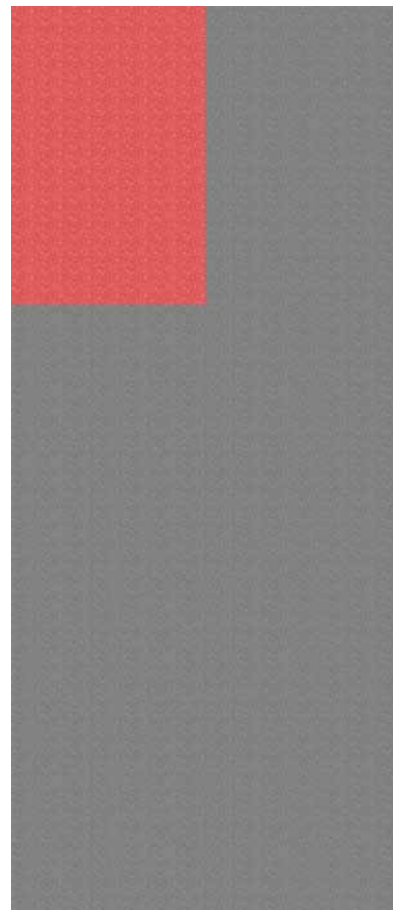
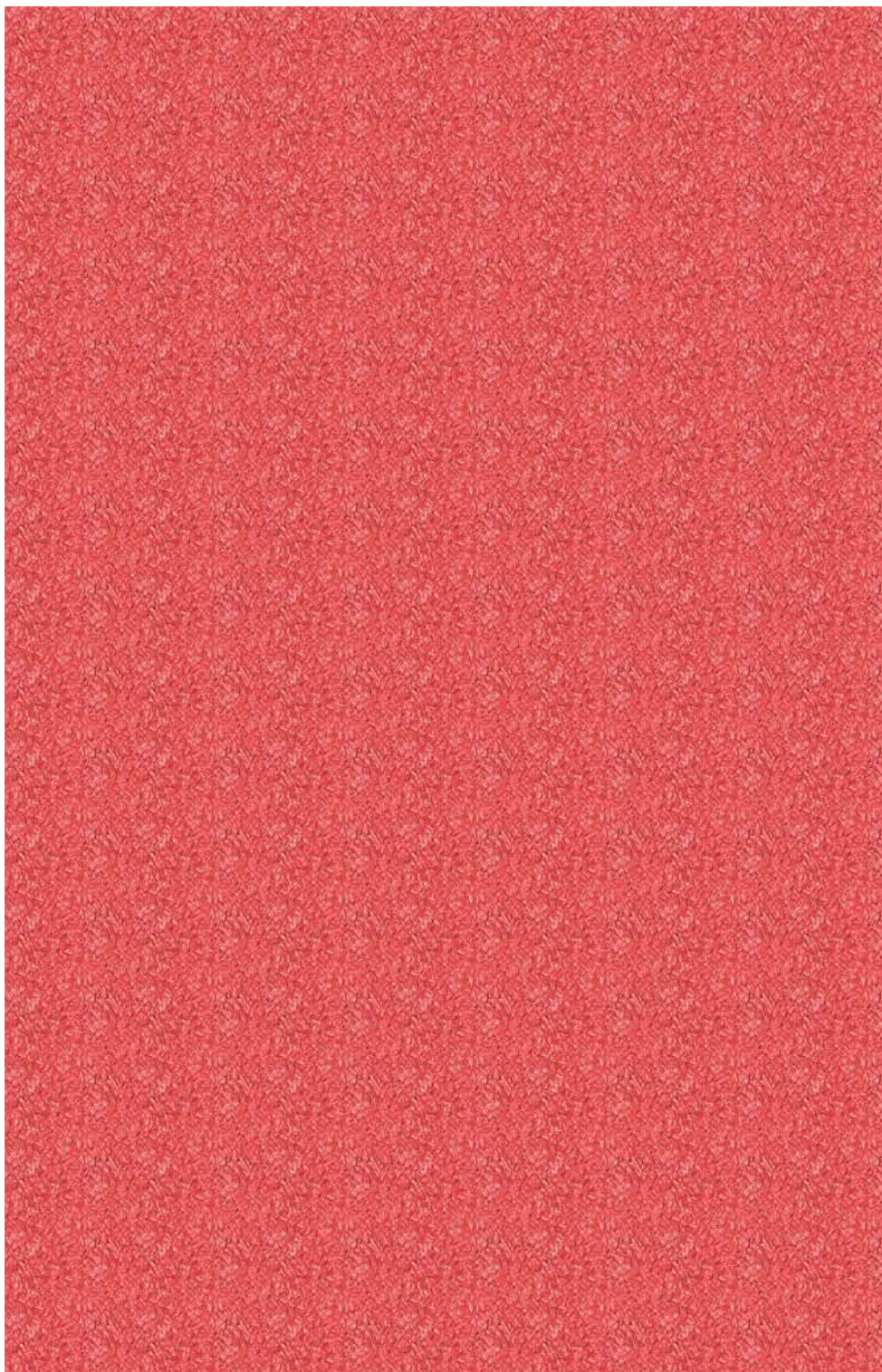
Rappresentazione in scala | Scale 1:1

**canvas cod. 5745 green**

fatto a mano

**derby**  
fin. sei

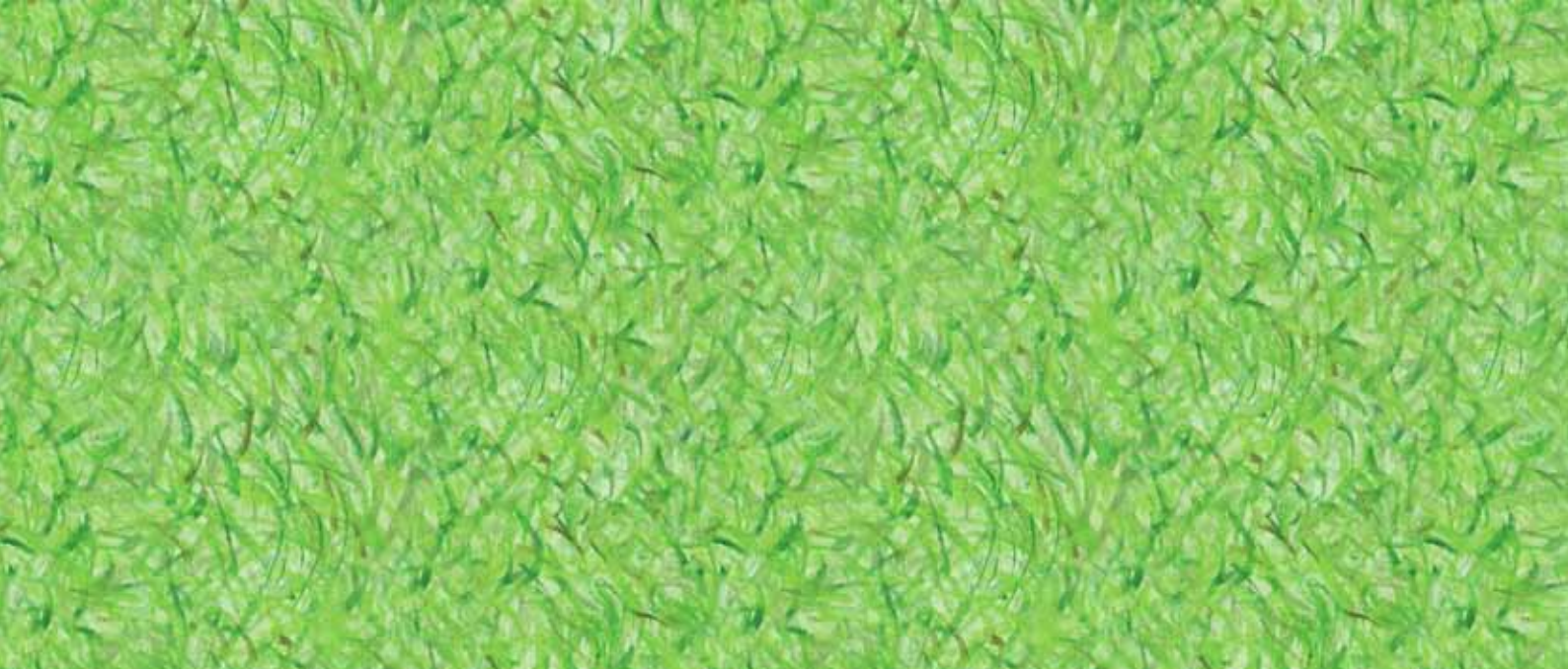
cm. 65



cm. 100

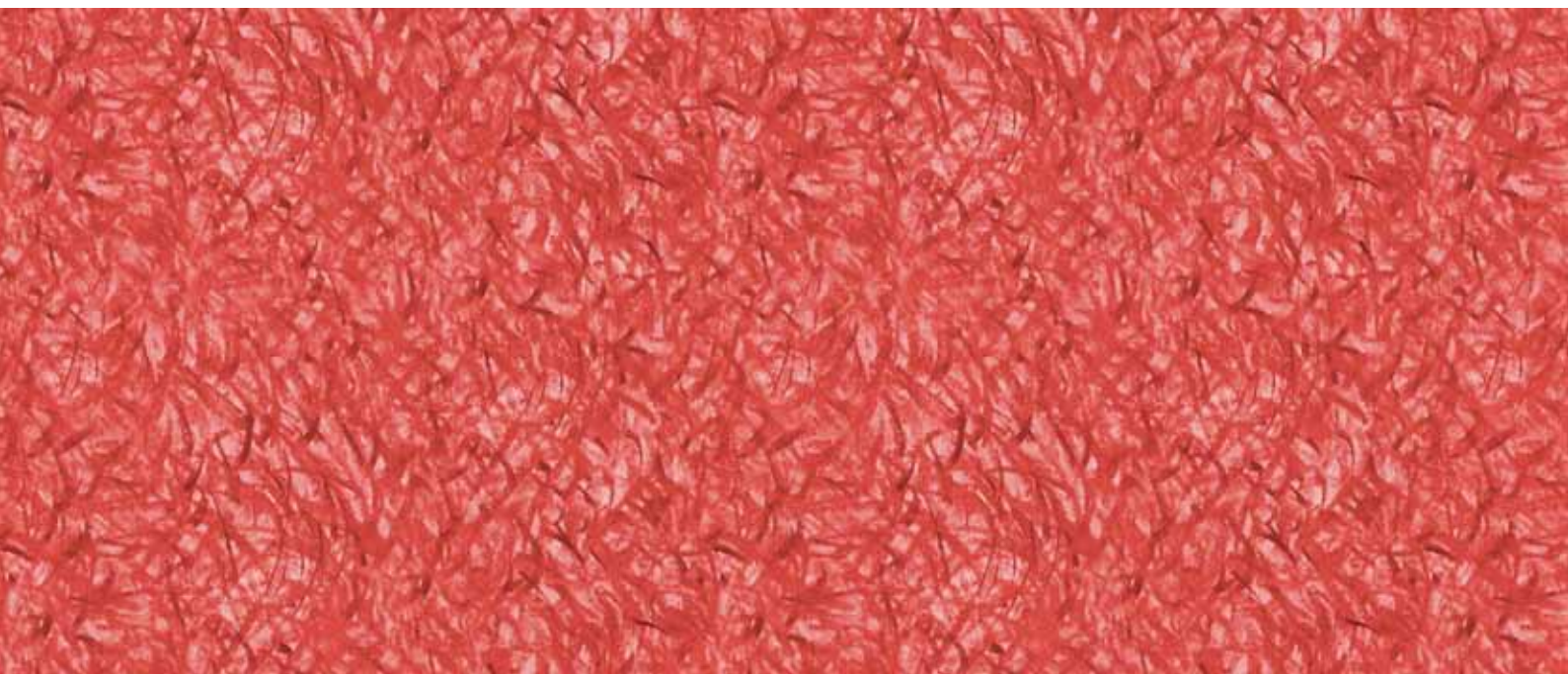
Pannello laminato 305x130 cm  
Porzione di pannello laminato 100x65 cm  
Rappresentazione in scala 1:5

Laminate sheet 305x130 cm  
Part of laminate sheet 100x65 cm  
Scale 1:5



Rappresentazione in scala | Scale 1:1

**derby cod. 5746 green**



Rappresentazione in scala | Scale 1:1

**derby cod. 5747 red**



Rappresentazione in scala | Scale 1:1

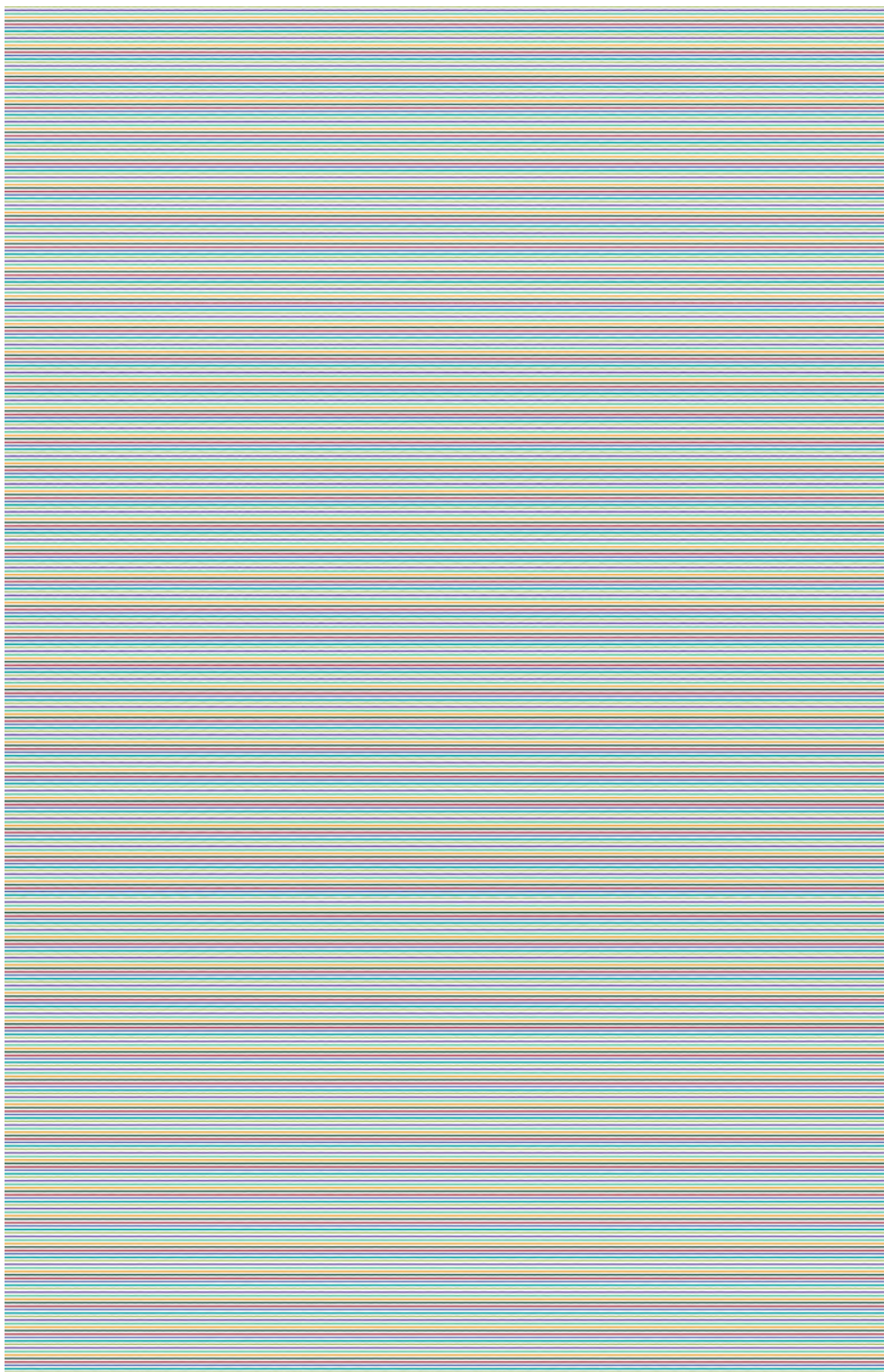
**derby cod. 5748 yellow**

fatto a mano

# furrows

fin. millerighe 2

cm. 65

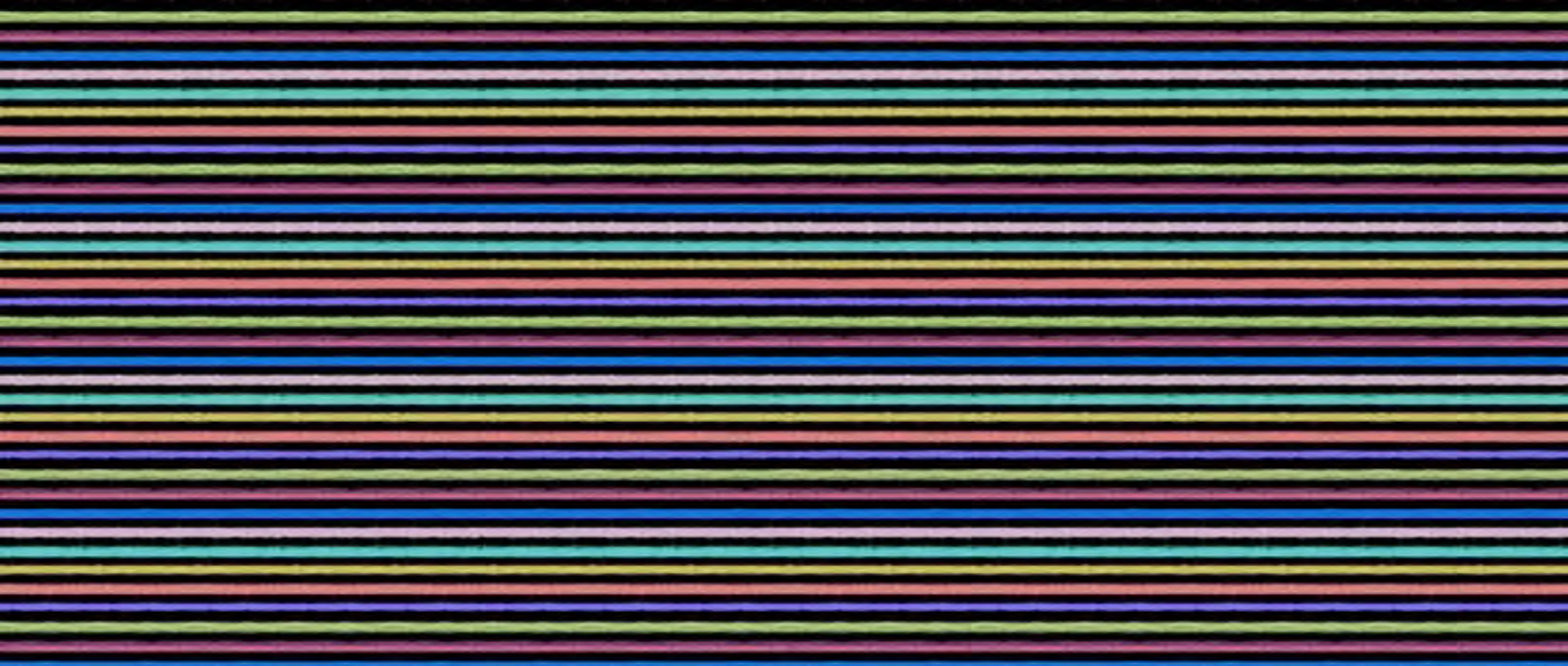


cm. 100



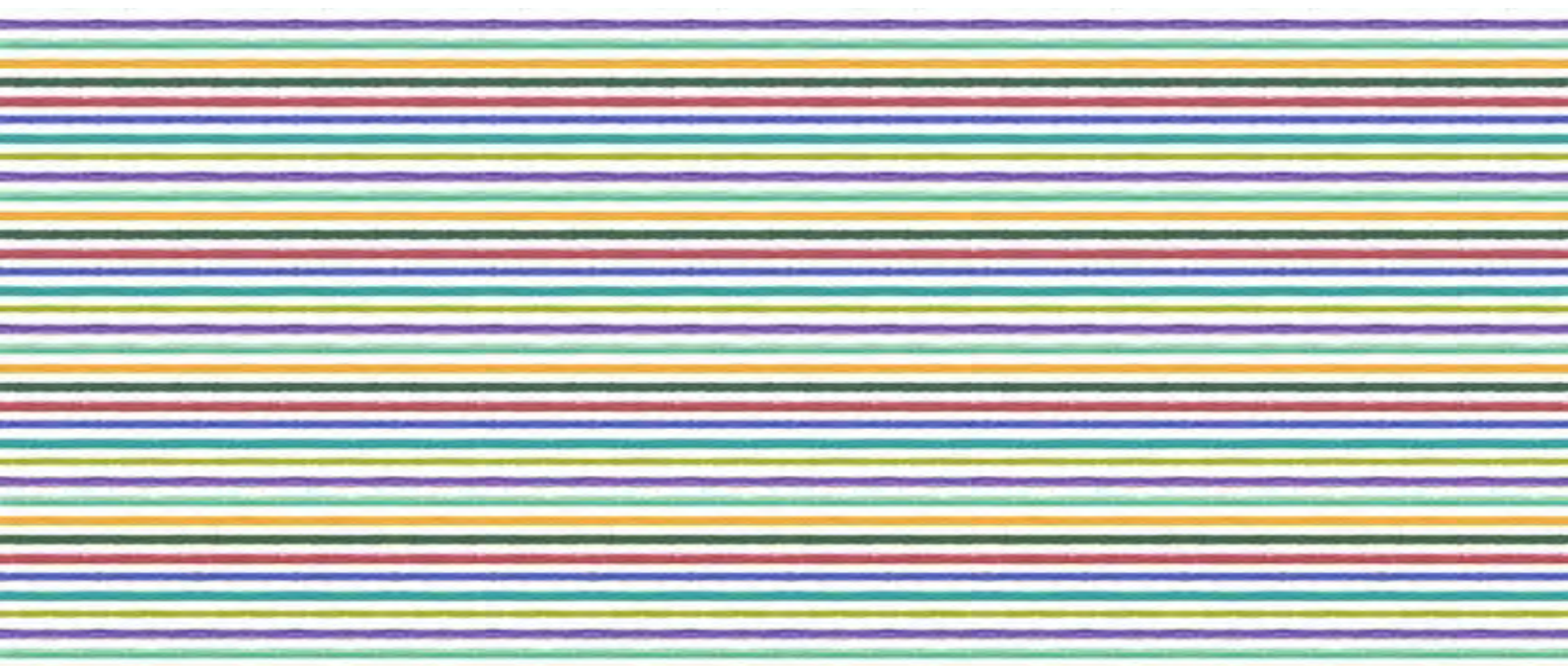
Pannello laminato 305x130 cm  
Porzione di pannello laminato 100x65 cm  
Rappresentazione in scala 1:5

Laminate sheet 305x130 cm  
Part of laminate sheet 100x65 cm  
Scale 1:5



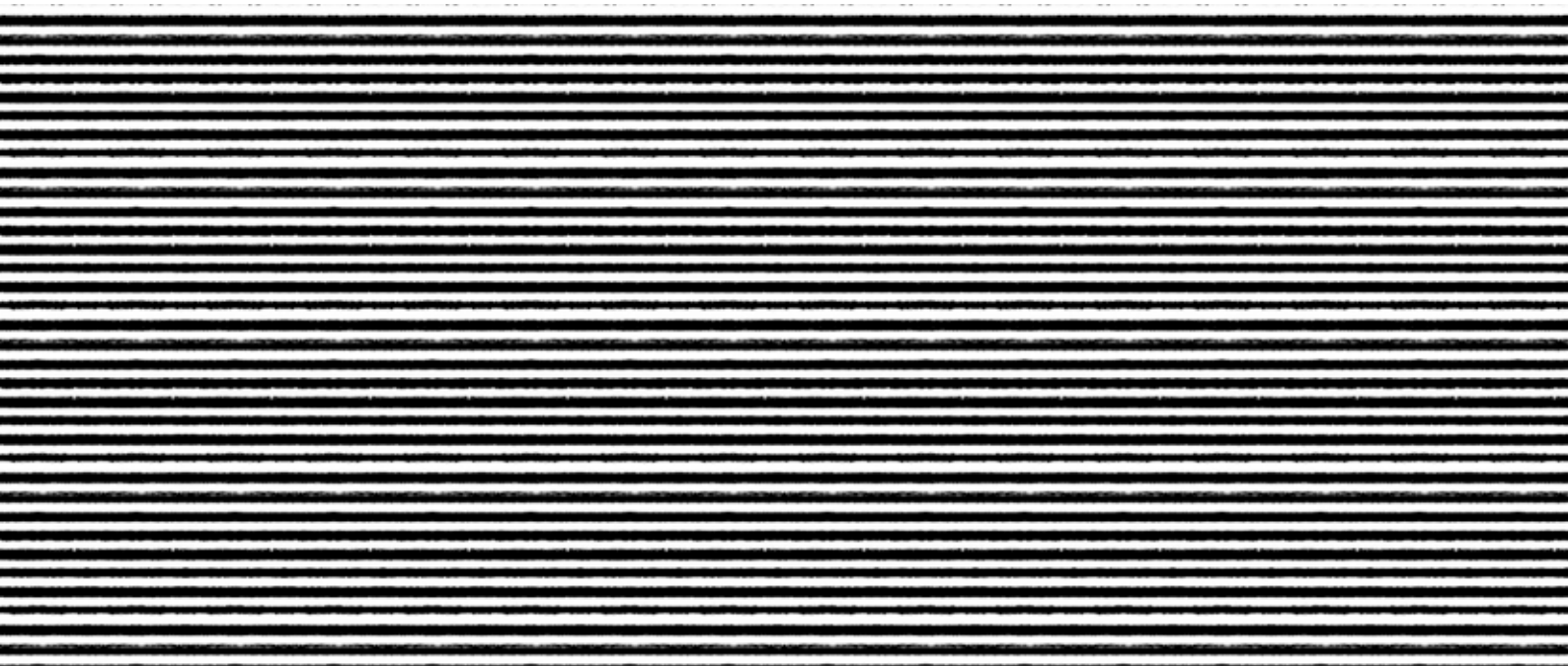
Rappresentazione in scala | Scale 1:1

**furrows cod. 5749 black/colors**



Rappresentazione in scala | Scale 1:1

**furrows cod. 5750 colors**



Rappresentazione in scala | Scale 1:1

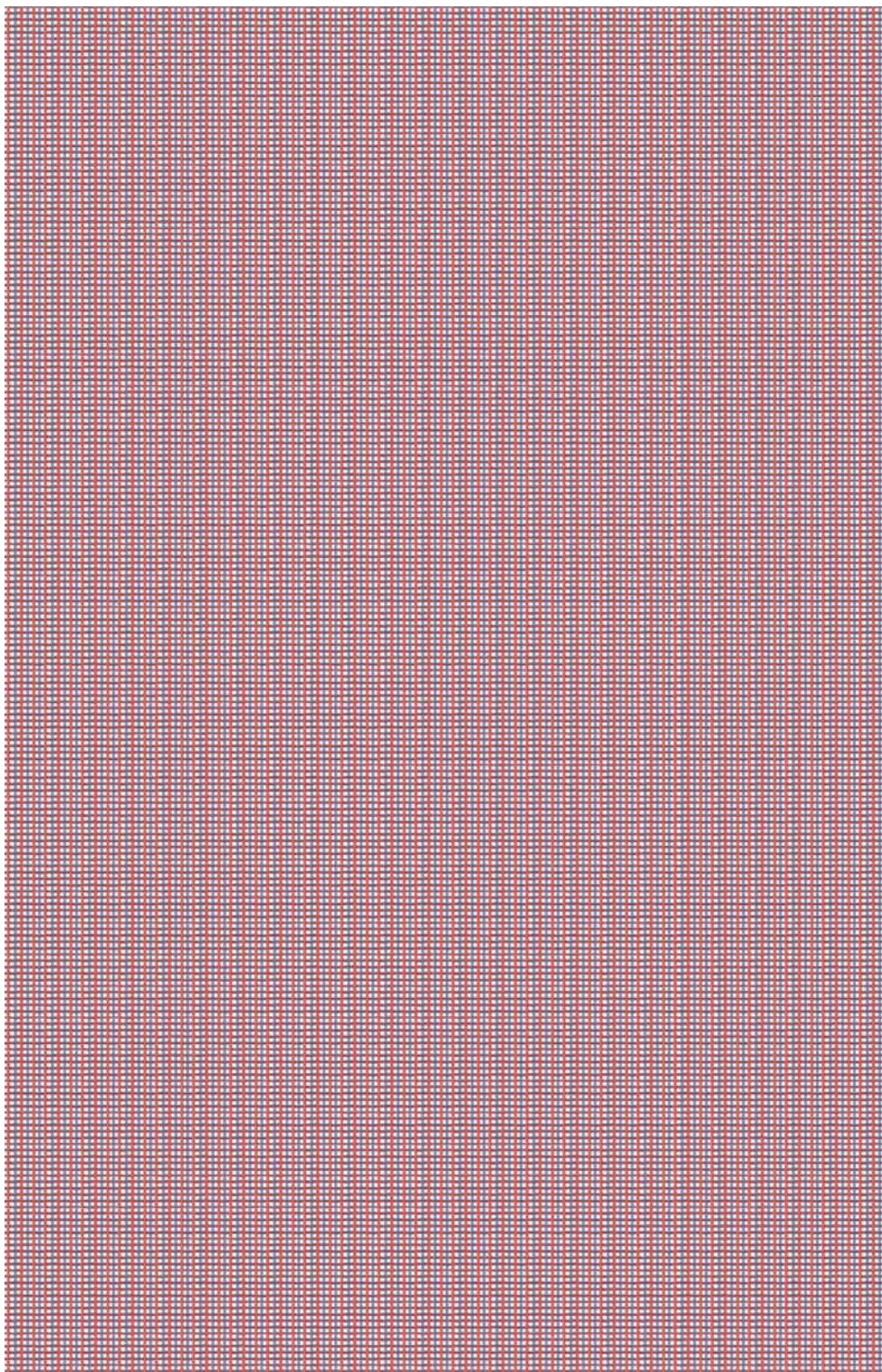
**furrows cod. 5751 b/w**

fatto a mano

# massaua

fin. sei

cm. 65

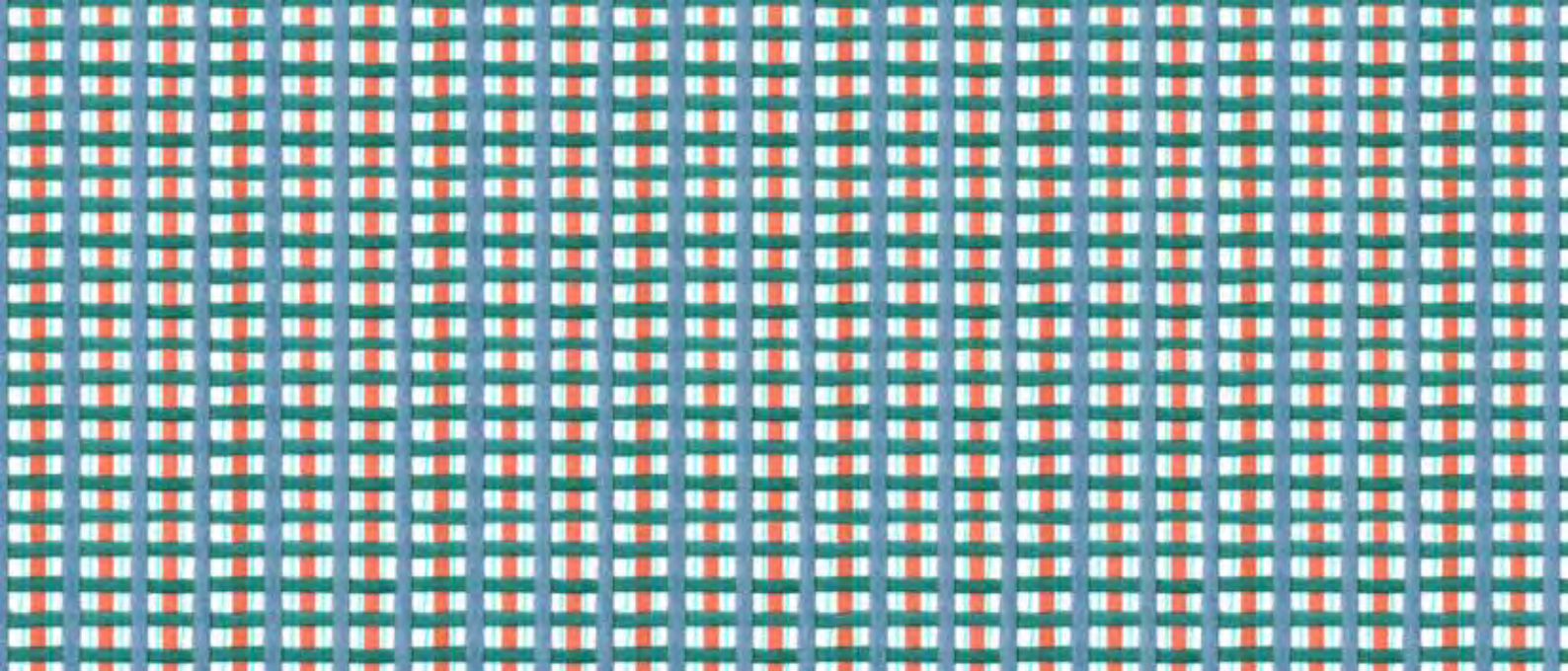


cm. 100

Pannello laminato 305x130 cm  
Porzione di pannello laminato 100x65 cm  
Rappresentazione in scala 1:5

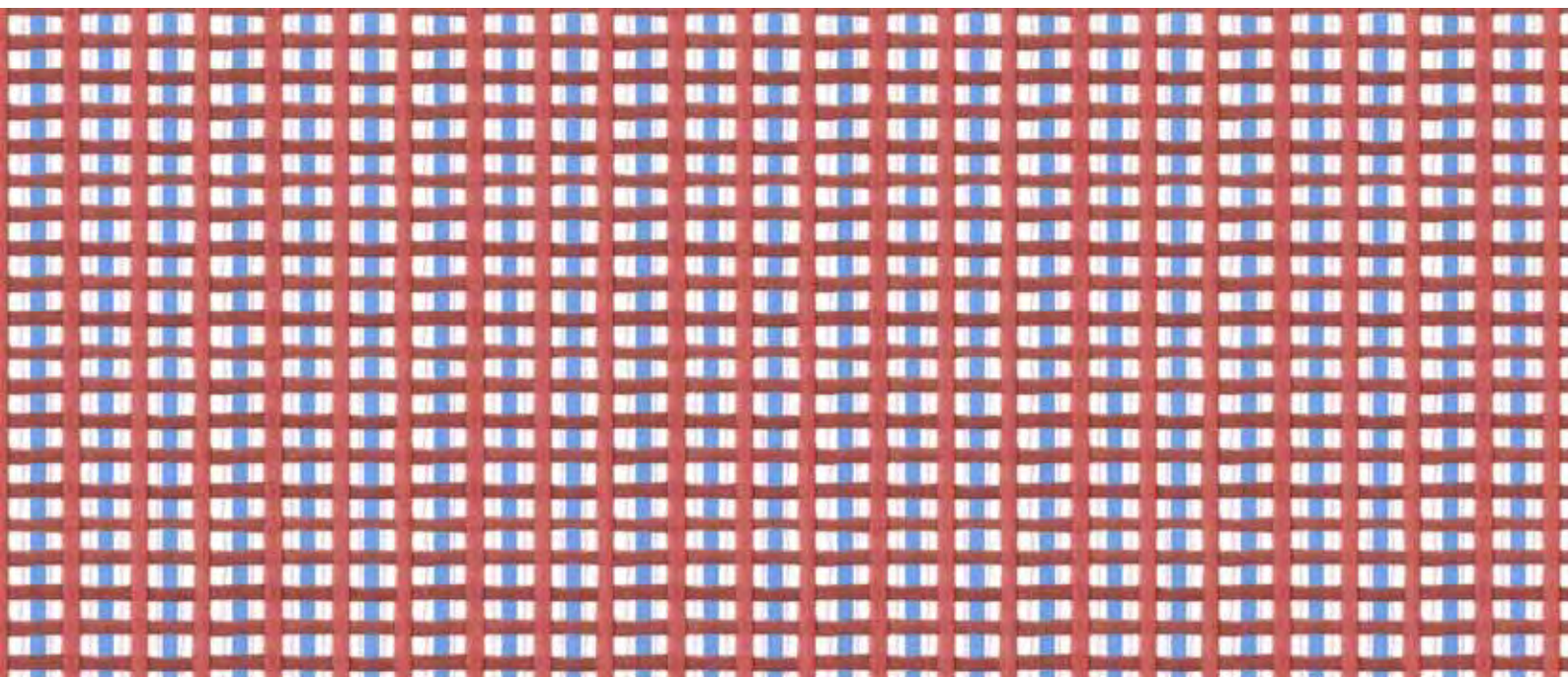
Laminate sheet 305x130 cm  
Part of laminate sheet 100x65 cm  
Scale 1:5





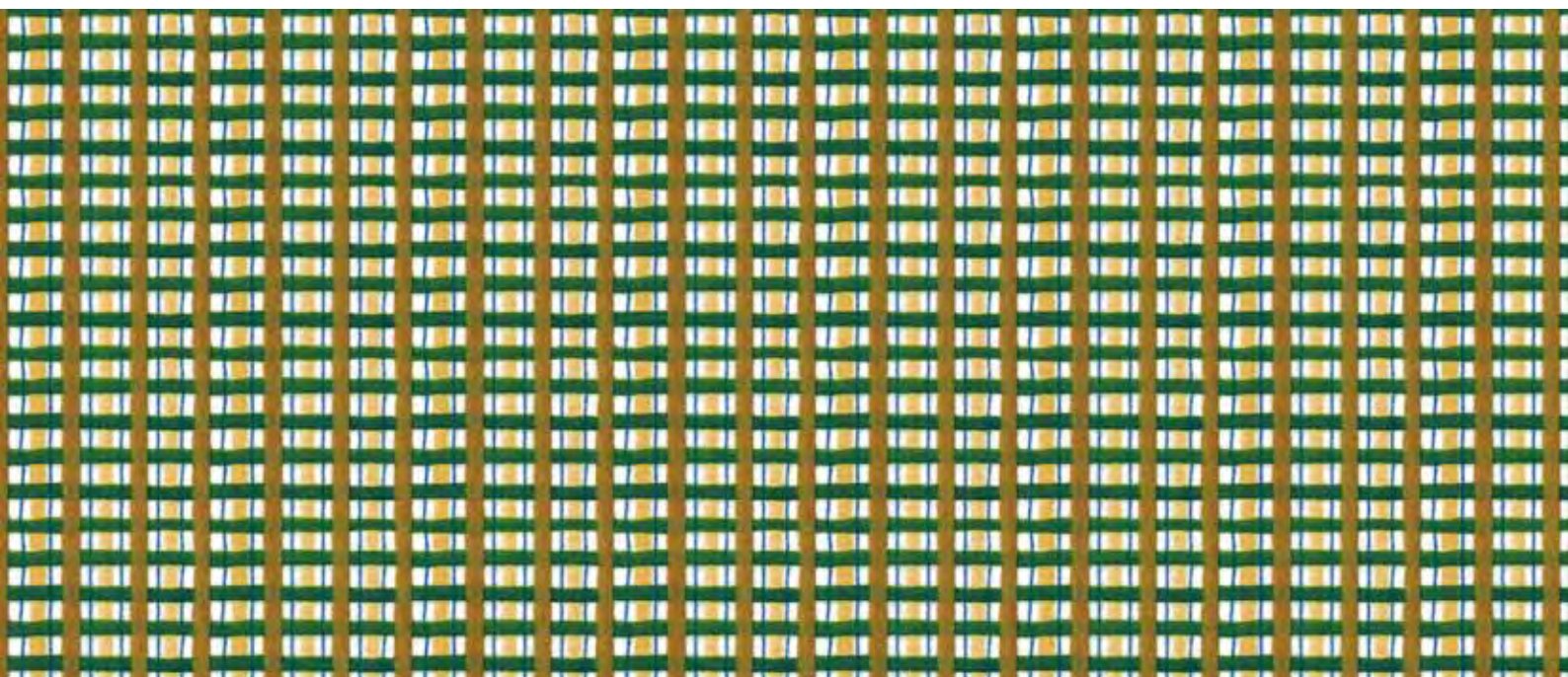
Rappresentazione in scala | Scale 1:1

massaua cod. 5752 blue/orange



Rappresentazione in scala | Scale 1:1

massaua cod. 5753 red/blue



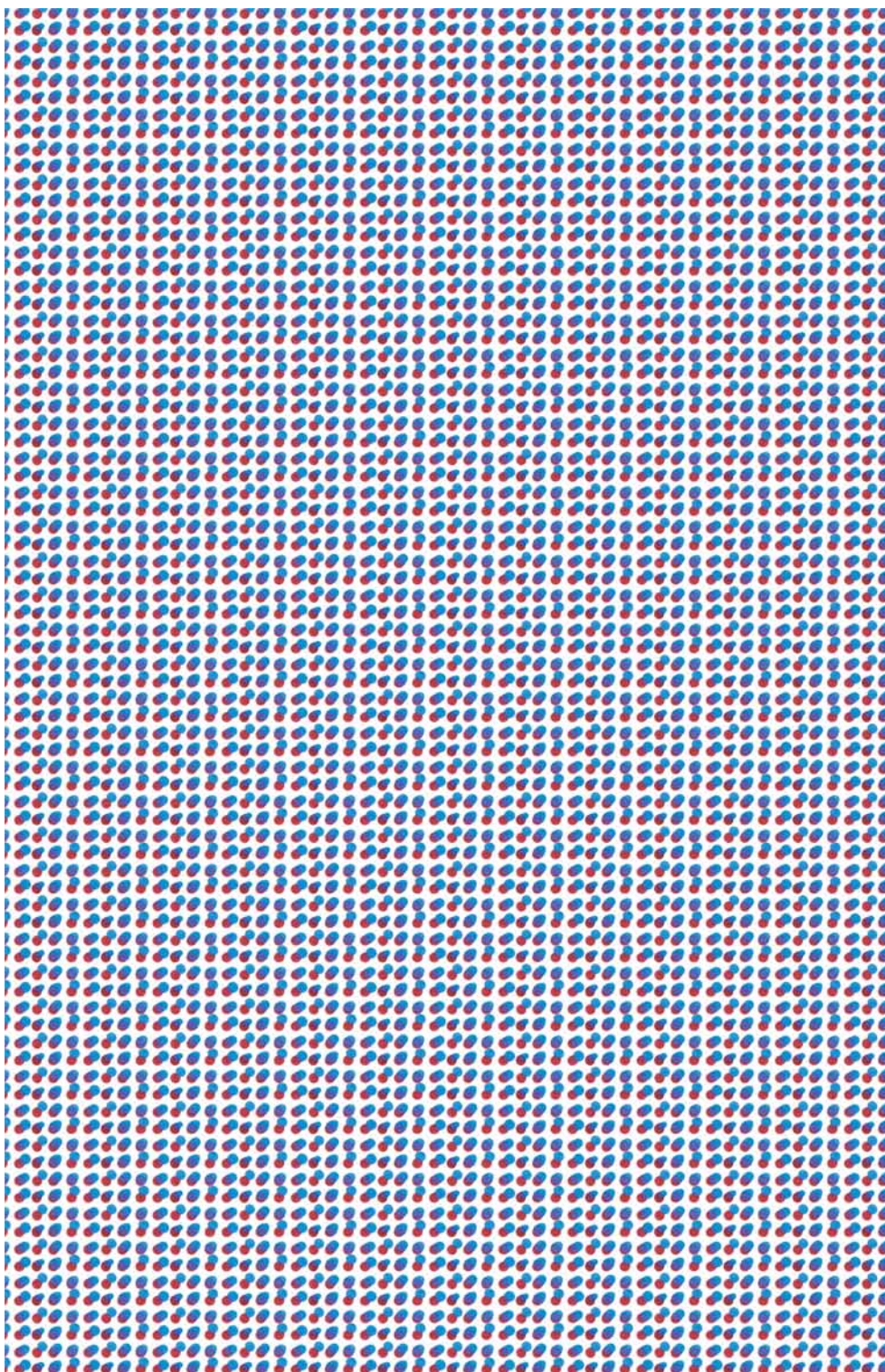
Rappresentazione in scala | Scale 1:1

massaua cod. 5754 brown/yellow

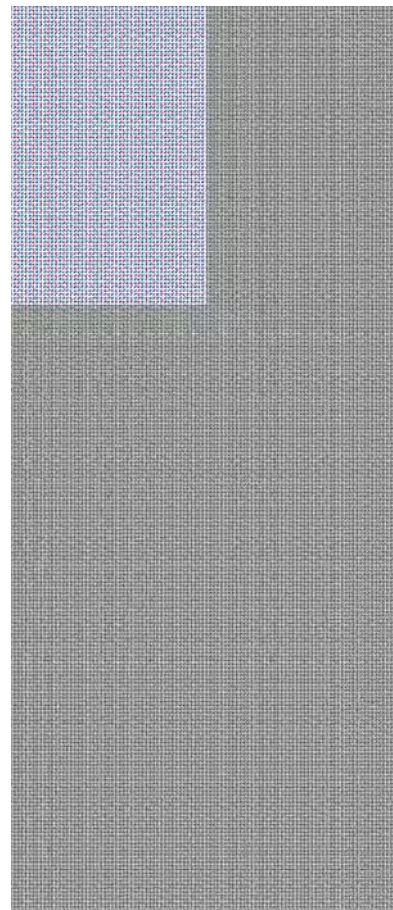
fatto a mano

**yayoi**  
fin. sei | lucida

cm. 65

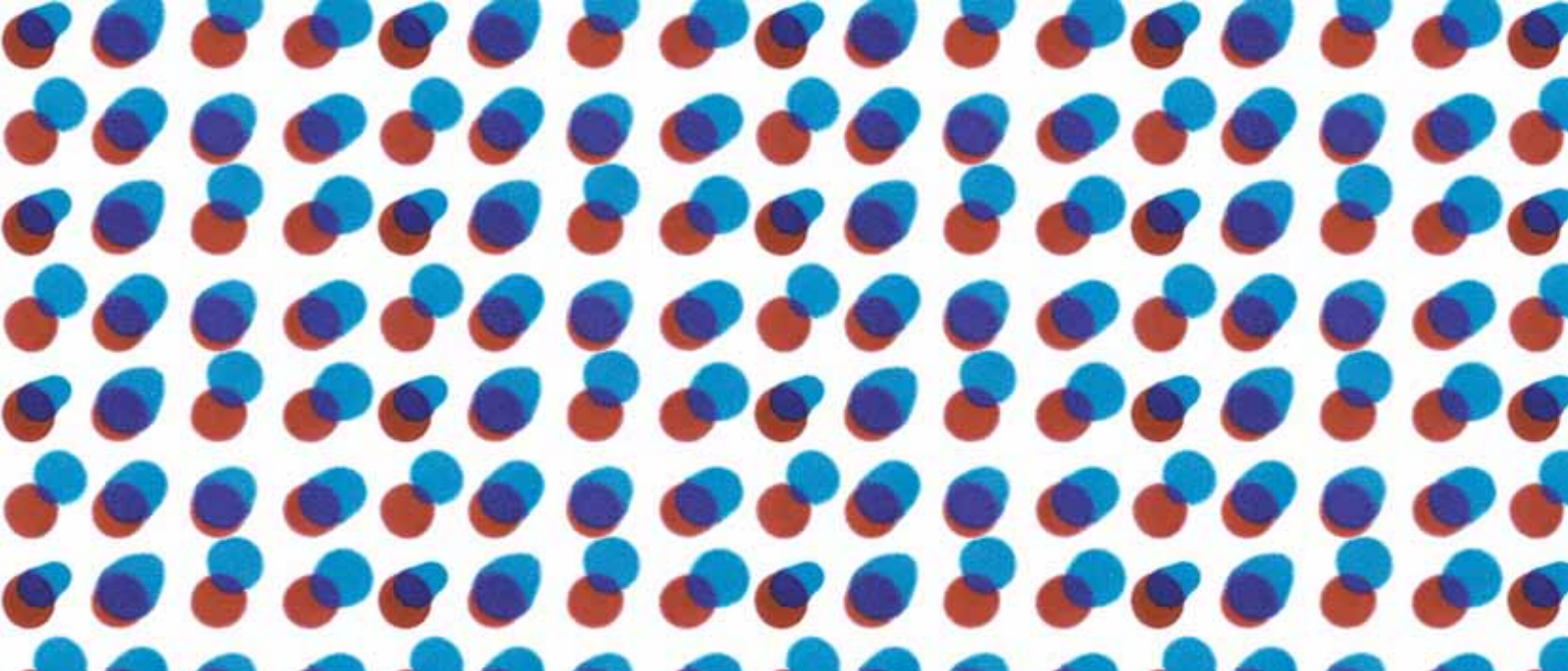


cm. 100



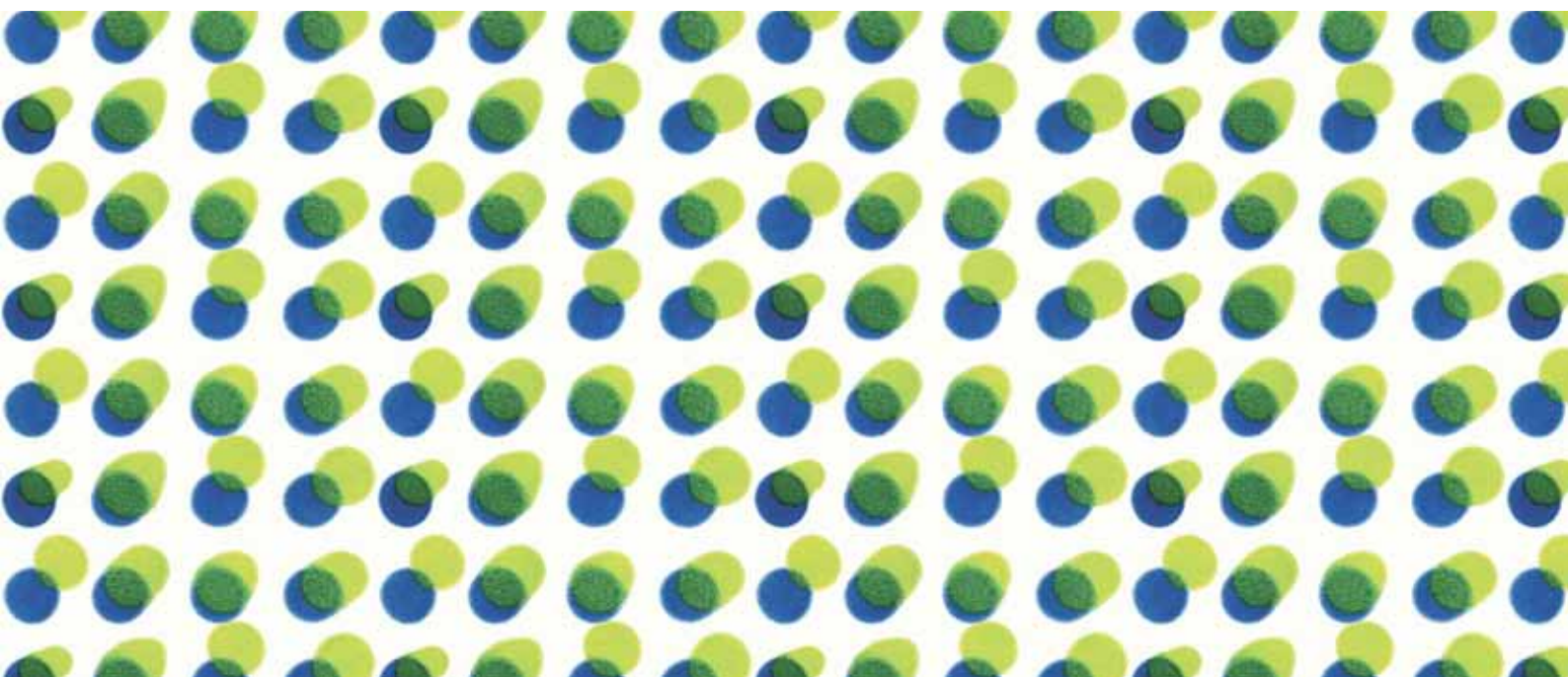
Pannello laminato 305x130 cm  
Porzione di pannello laminato 100x65 cm  
Rappresentazione in scala 1:5

Laminate sheet 305x130 cm  
Part of laminate sheet 100x65 cm  
Scale 1:5



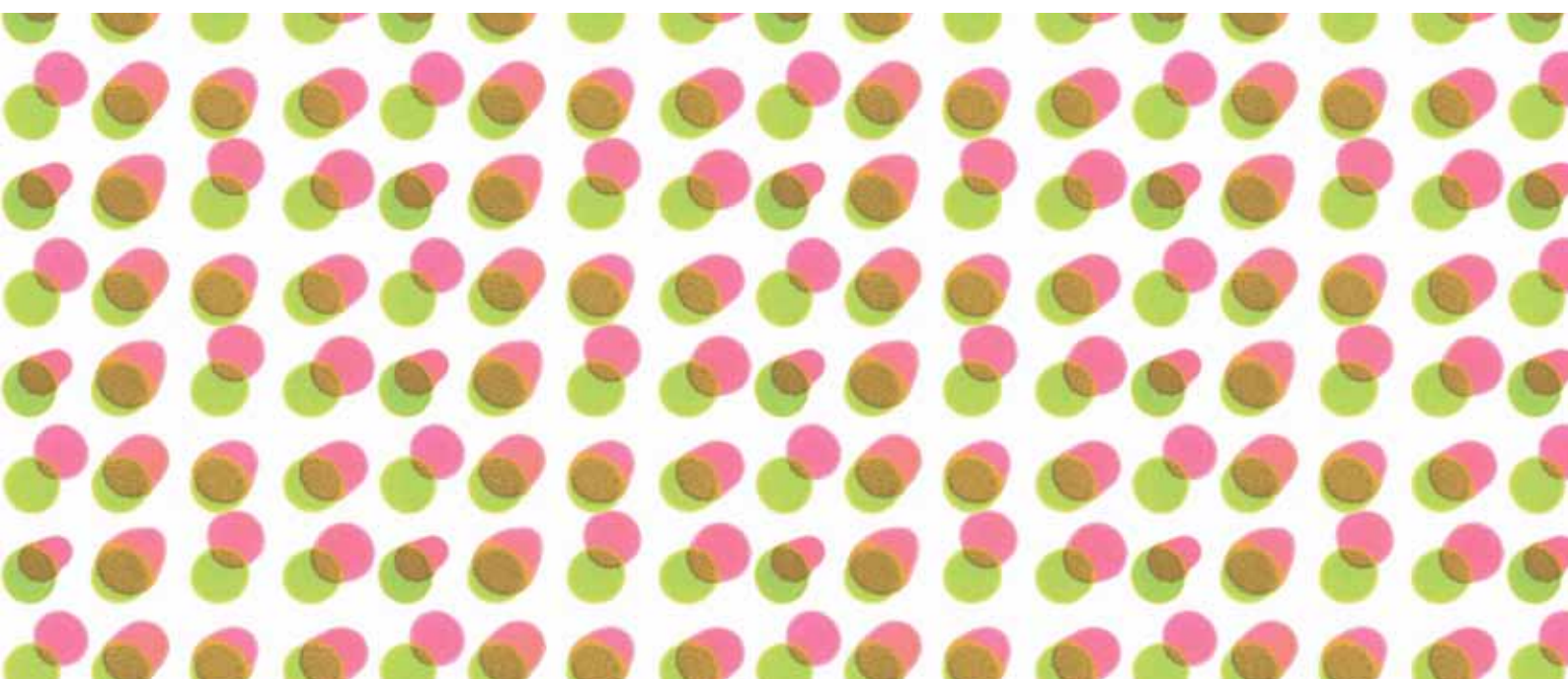
Rappresentazione in scala | Scale 1:1

yayoi cod. 5755 red/blue



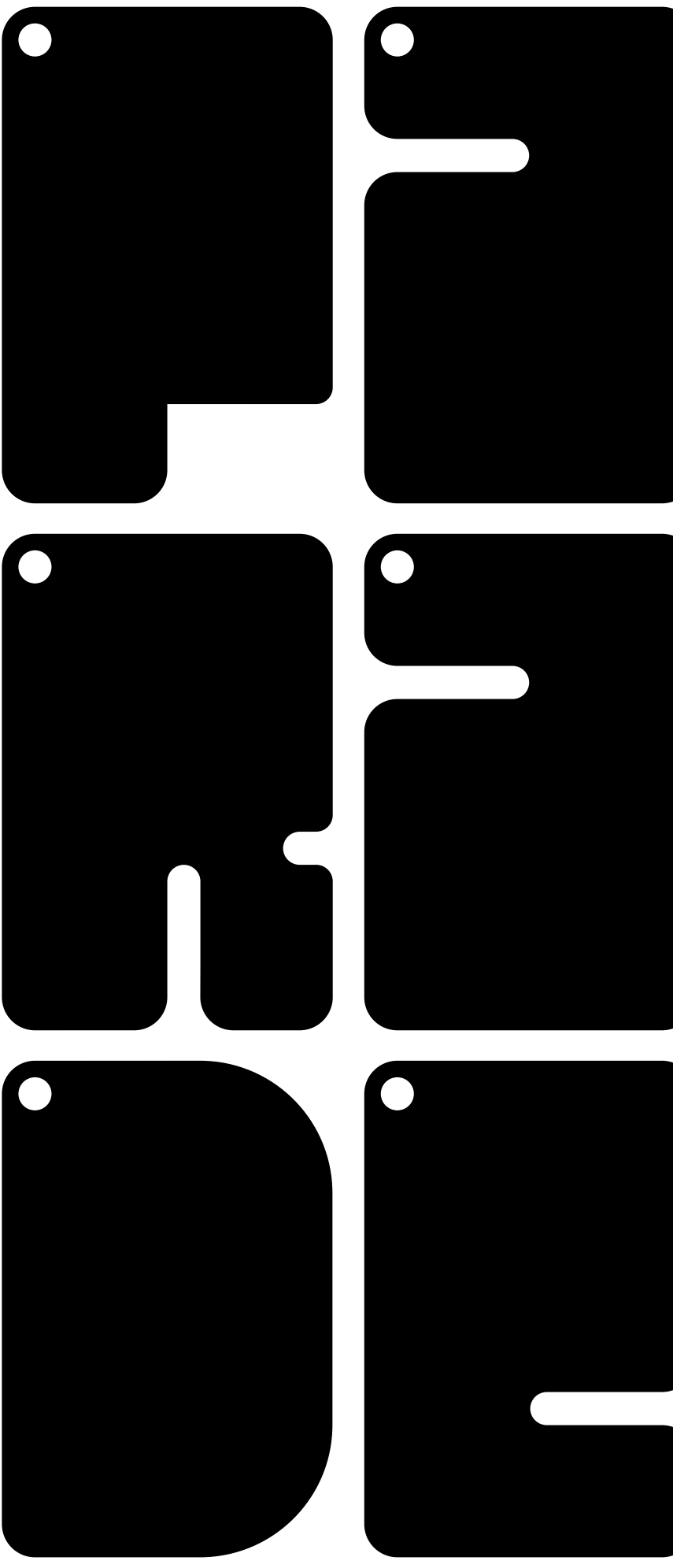
Rappresentazione in scala | Scale 1:1

yayoi cod. 5756 blue/green



Rappresentazione in scala | Scale 1:1

yayoi cod. 5757 green/pink



**Parade Collection**

**design Giulio Iacchetti**